

RICHARD H. TAKECHI
REGISTER OF DEEDS
DOUGLAS COUNTY, NE

00 SEP 12 AM 8:04

RECEIVED



BK 1351 PG 125-128



MISC 2000 12138

Nebr Doc Stamp Tax
Date
\$
By

SUPPLEMENTAL
SANITARY AND IMPROVEMENT DISTRICT STATEMENT
DOUGLAS COUNTY, NEBRASKA

STATE OF NEBRASKA)
) ss.
COUNTY OF DOUGLAS)

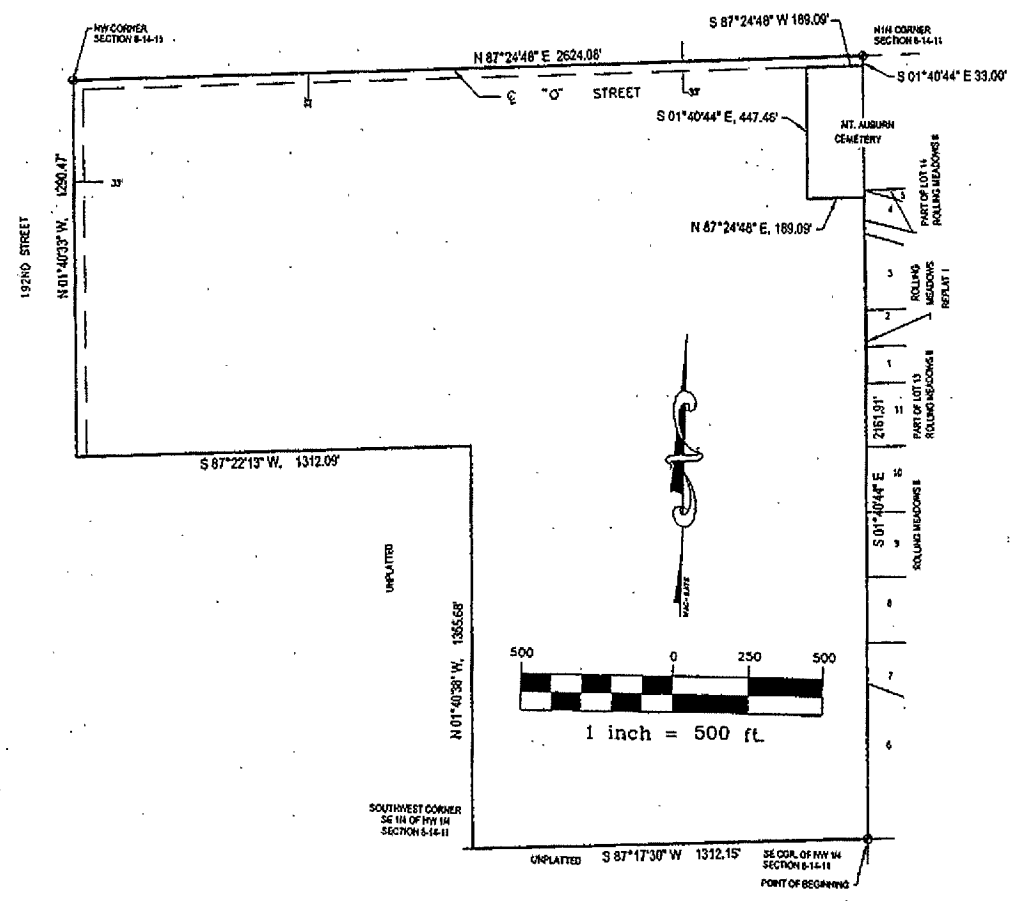
B *MISC* *2/100*
 FEE _____ FB _____
 BKP _____ C/O _____ CO _____
2 DEL _____ SCAN *ds* FV _____

Jim Emmons being first duly sworn, states that he is the Clerk of Sanitary and Improvement District No. 456 of Douglas County, Nebraska and makes the following statement regarding same:

1. District Number: 456
2. Outer Boundaries: See Exhibit "A" attached hereto and by this reference made a part hereof.
3. The purpose of this District shall be acquiring, installing, repairing, maintaining, renewing, operating and replacing electrical service lines and conduits, a sewer system, a water system, a system of sidewalks, public roads, streets and highways, a civil defense warning system, to contract for water for fire protection and for resale to the residents of the District, and to contract for gas and electricity, for street lighting for the public streets and highways within the District and to acquire, improve and operate public parks, playgrounds and recreational facilities. The District shall have all of the powers and authorities as are permitted by law, to achieve the purposes hereinabove set forth, including, but not in limitation of the foregoing, the power and authority to contract with corporations, utility companies, or municipalities for water for fire protection and for resale to the residents of the District, and for electricity and gas, for street lighting of the public streets and highways within the District and for the disposal of sewage in the use of existing sewer improvement facilities and for the operation and maintenance of electrical service lines and conduits.
4. The District has the power to levy an unlimited property tax to pay its debts and its expenses of operation and maintenance.
5. The District is required by statute to levy special assessments on property in the District to the full extent of special benefits arising by reason of improvements installed by it.
6. In all years when a budget is required by law, the District's annual budget is filed with the County Clerk, which budget shows anticipated revenue and expenses, levy, and indebtedness of the District.
7. The actual current levy of the District may be obtained from the County Clerk.

Return to:
025562
FULLENKAMP, DOYLE & JOBEUN
11440 WEST CENTER ROAD
OMAHA, NEBRASKA 68144-4482
Allen

DISTRICT BOUNDARY
DOUGLAS COUNTY S.I.D. NO. 456
(See Sheet 2 of 2 for Legal Description)



E&A CONSULTING GROUP
12001 "O" STREET
OMAHA, NE 68137
(402) 895-4700 FAX: (402) 895-3599

SHEET 1 OF
8/21/00
#99027
DRAWN BY LI

Exhibit "A"

105017 1/2nd Civil Final Design SD-456.dwg, 08/22/00 08:49:20 AM, LLD

PL PLOT(S) 44927 (000) / 41 PLOTS 456 DWG

LEGAL DESCRIPTION
DISTRICT BOUNDARY
DOUGLAS COUNTY SID NO. 456

Part of the NW 1/4 Section 8; and also together with the SW 1/4 of Section 5; all located in Township 14 North, Range 11 East of the 6th P.M., Douglas County, Nebraska, more particularly described as follows:

Beginning at the Southeast corner of said NW 1/4 of Section 8, said point also being the Southwest corner of Lot 6, Rolling Meadows II, a subdivision located in the NE 1/4 of said Section 8; thence S87°17'30"W (assumed bearing) along the South line of said NW 1/4 of Section 8, a distance of 1312.15 feet to the Southwest corner of the SE 1/4 of said NW 1/4 of Section 8; thence N01°40'38"W along the West line of the East 1/2 of said NW 1/4 of Section 8, a distance of 1355.68 feet; thence S87°22'13"W, a distance of 1312.09 feet to a point on the West line of said Section 8; thence N01°40'33"W along said West line of Section 8, a distance of 1290.47 feet to the Northwest corner of said Section 8; thence N87°24'48"E along the North line of said Section 8, a distance of 2624.08 feet to the North 1/4 corner of said Section 8; thence S01°40'44"E along the East line of said NW 1/4 of Section 8, a distance of 33.00 feet to a point on the South right-of-way line of "Q" Street; thence S87°24'48"W along said South right-of-way line of "Q" Street, a distance of 189.09 feet to the Northwest corner of Mount Auburn Cemetery; thence S01°40'44"E along the West line of said Mount Auburn Cemetery, a distance of 447.46 feet to the Southwest corner of said Mount Auburn Cemetery; thence N87°24'48"E along the South line of said Mount Auburn Cemetery, a distance of 189.09 feet to a point on the West line of Lot 14, said Rolling Meadows II, said point also being on the East line of said NW 1/4 of Section 8; thence S01°40'44"E along the West line of said Rolling Meadows II, said line also being said East line of the NW 1/4 of Section 8, a distance of 2161.91 feet to the point beginning.

Said tract of land contains an area of 5,076,078 square feet or 116.531 acres, more or less.

#99027 sw
8/1/00
Revised 8/22/00

E & A CONSULTING GROUP, INC.
12001 "Q" STREET
OMAHA, NE 68137