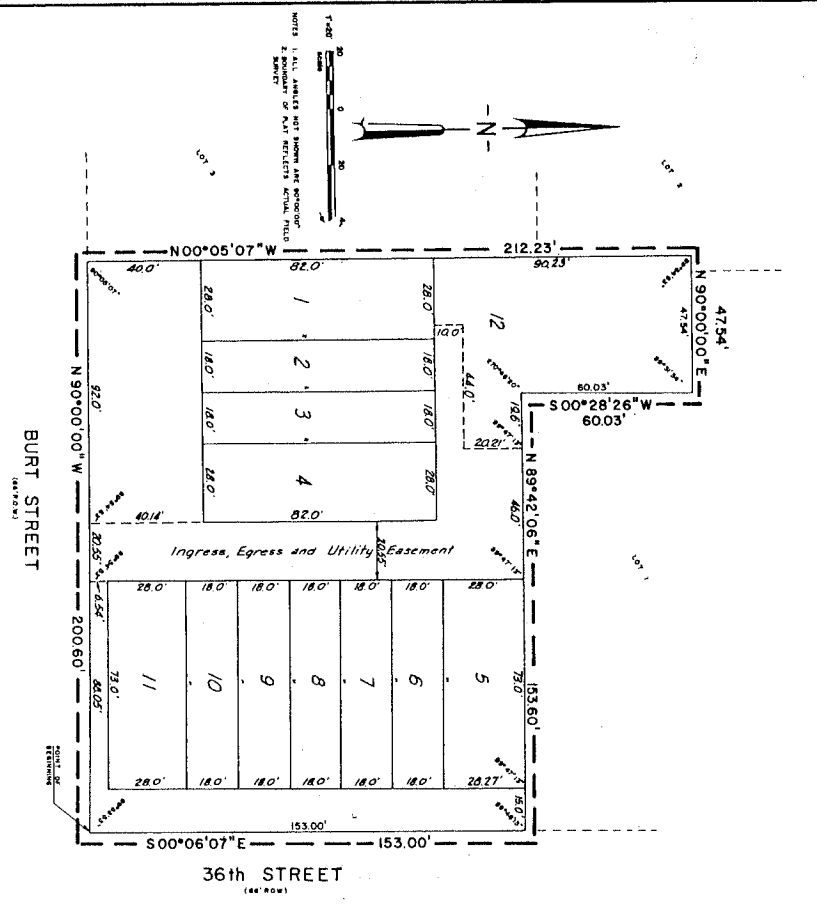


CATHEDRAL SQUARE TOWNHOMES

A REPLAT OF THE WEST 4087' OF THE SOUTH 540' OF LOT 1, THE EAST 612 OF THE SOUTH 540' OF LOT 2, THE EAST 612 OF LOT 3, AND ALL OF LOT 4 EXCEPT THE NORTH 60' OF THE EAST 1530', BLOCK 8, LOWES, 2nd ADDITION, CITY OF OMAHA, DOUGLAS COUNTY, NEBRASKA. (FROM DEED DESCRIPTION)
 LOTS 1 thru 12 INCLUSIVE



Dodge Engineering and Associates, Inc.
 ENGINEERS LAND SURVEYORS PLANNERS
 300 CALVERT STREET SELLVILLE NEBRASKA 68402-2949

1730-310

RESOLUTION

Be it resolved that the undersigned engineer and land surveyor do hereby certify that I have made a preliminary survey of the subdivision herein and that the same conforms with the provisions of the Nebraska Subdivision Act, Chapter 78-1,202, R.S.N., and that the same is in accordance with the provisions of the Omaha City Ordinance 12-127, Ord. of Omaha, 1981. I have also determined that the proposed subdivision does not create any public utility easements or rights of way and that the same is in accordance with the provisions of the Omaha City Ordinance 12-127, Ord. of Omaha, 1981.

ACKNOWLEDGMENT OF NOTARY

State of Nebraska) ss
 County of Douglas) ss
 On this 21st day of October, 1983, before me, the Notary Public for said County and State of Nebraska, personally known to me to be the legal person whose name appears hereon, and who is duly qualified to execute this instrument, the within and foregoing Declaration to be his voluntary act and deed.
 Witness my hand and official seal, in Omaha, Nebraska, the date last aforesaid. My commission expires on 3/31/84.



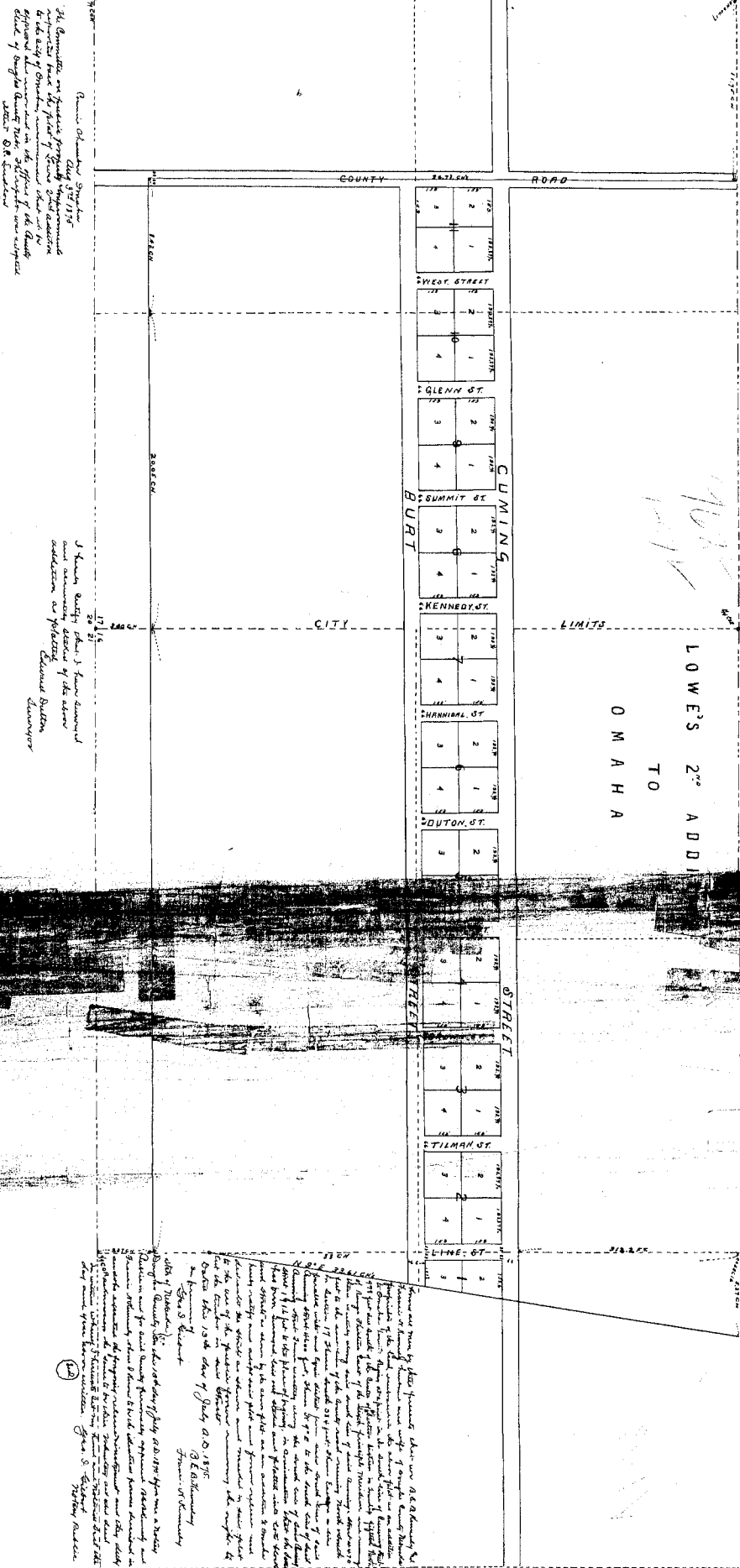
SUBDIVISION CERTIFICATE

I, Donald B. Hill, the undersigned engineer and land surveyor, do hereby certify that I have made a preliminary survey of the subdivision herein and that the same conforms with the provisions of the Nebraska Subdivision Act, Chapter 78-1,202, R.S.N., and that the same is in accordance with the provisions of the Omaha City Ordinance 12-127, Ord. of Omaha, 1981. I have also determined that the proposed subdivision does not create any public utility easements or rights of way and that the same is in accordance with the provisions of the Omaha City Ordinance 12-127, Ord. of Omaha, 1981. I have also determined that the proposed subdivision does not create any public utility easements or rights of way and that the same is in accordance with the provisions of the Omaha City Ordinance 12-127, Ord. of Omaha, 1981.



APPROVAL OF DODGE CITY ENGINEER
 I hereby approve this plat of Cathedral Square Townhomes this 21st day of October, 1983.
APPROVAL OF DODGE COUNTY ENGINEER
 I hereby certify that adequate provisions have been made for compliance with the provisions of the Omaha City Ordinance 12-127, Ord. of Omaha, 1981.
 Date: April 12, 1981
COUNTY TREASURER CERTIFICATE
 This is to certify that I find no regular or special taxes due or delinquent against the property described within the Surveyors Certificate of ownership shown on this plat as shown by the records of the County Treasurer's Office.
 Date: April 12, 1981
APPROVAL OF DODGE COUNTY SHERIFF
 I have reviewed this plat of Cathedral Square Townhomes this 21st day of October, 1983.
APPROVAL OF DODGE COUNTY PLANNING BOARD
 This plat of Cathedral Square Townhomes was approved by the Dodge City Planning Board on this 21st day of October, 1983.
APPROVAL OF DODGE CITY COUNCIL
 This plat of Cathedral Square Townhomes was approved by the Dodge City Council on this 21st day of October, 1983.
APPROVAL OF DODGE CITY PLANNING BOARD
 This plat of Cathedral Square Townhomes was approved by the Dodge City Planning Board on this 21st day of October, 1983.

56 Dad
 RECEIVED
 OCT 22 1983
 1730-310
 89-211



James O'Connell Street
 Aug 27th 1878
 The Board of Public Works has the honor to advise you that the same has been approved by the Board of Public Works and it is the duty of the Board of Public Works to cause the same to be laid out in the office of the County Clerk of Douglas County, Mo. at the expense of the owner of the same.
 James O'Connell
 City Clerk

J. Henry Smith, Clerk of the Board
 and Commissioner of the same
 and the Board of Public Works
 Douglas County
 Missouri

The Board of Public Works has the honor to advise you that the same has been approved by the Board of Public Works and it is the duty of the Board of Public Works to cause the same to be laid out in the office of the County Clerk of Douglas County, Mo. at the expense of the owner of the same.
 James O'Connell
 City Clerk

968