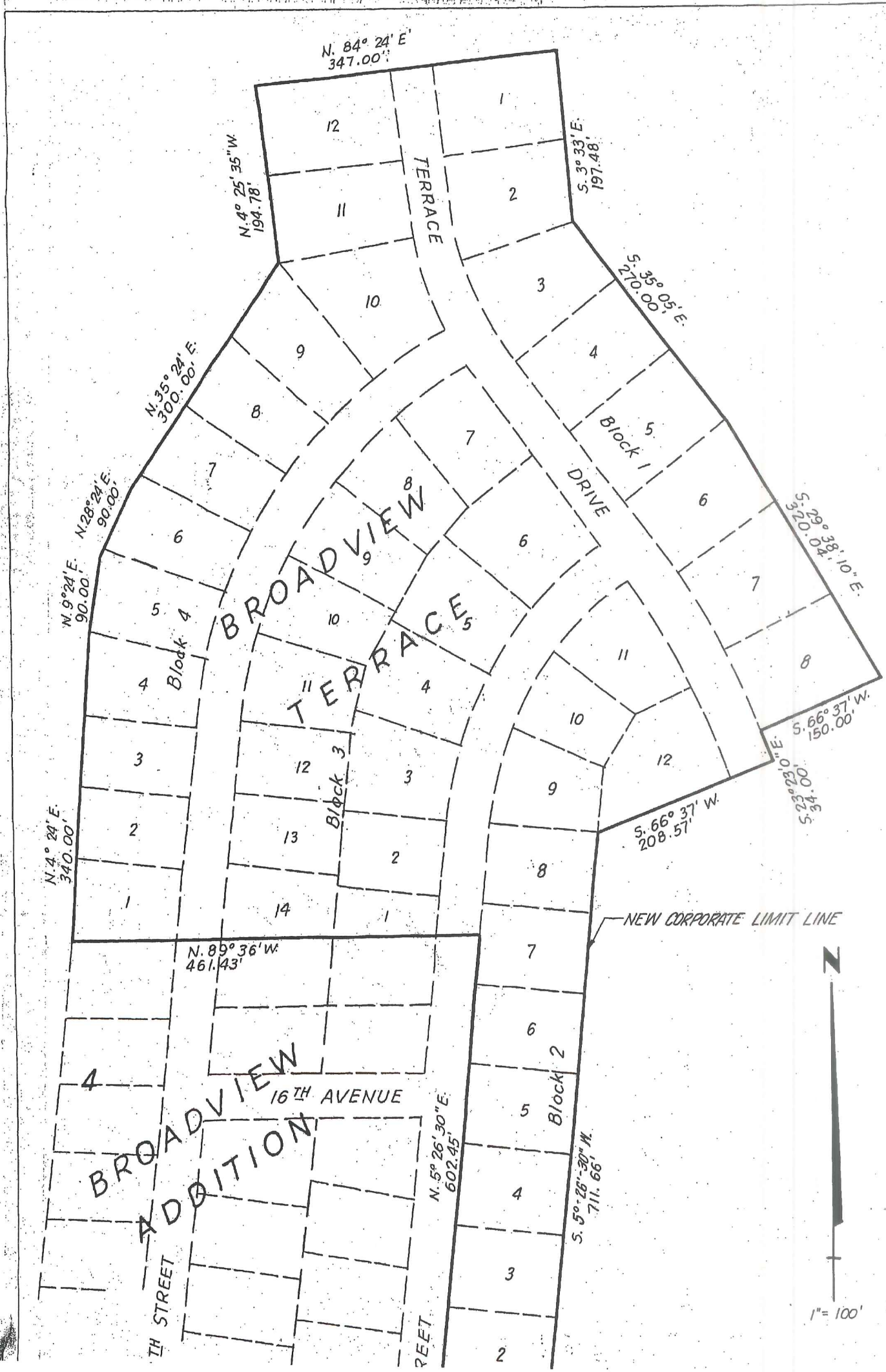


# DEED RECORD

18307-REDFIELD & COMPANY, INC., CHAIR

No. 24 - Plat - Marvin L. Garber to The People #  
Filed for record Jan. 5, 1968 at 2:07 P.M., Book 116, #  
Page 107. Helen D. Morton, Register of Deeds. Fee \$2.75#



60.00'

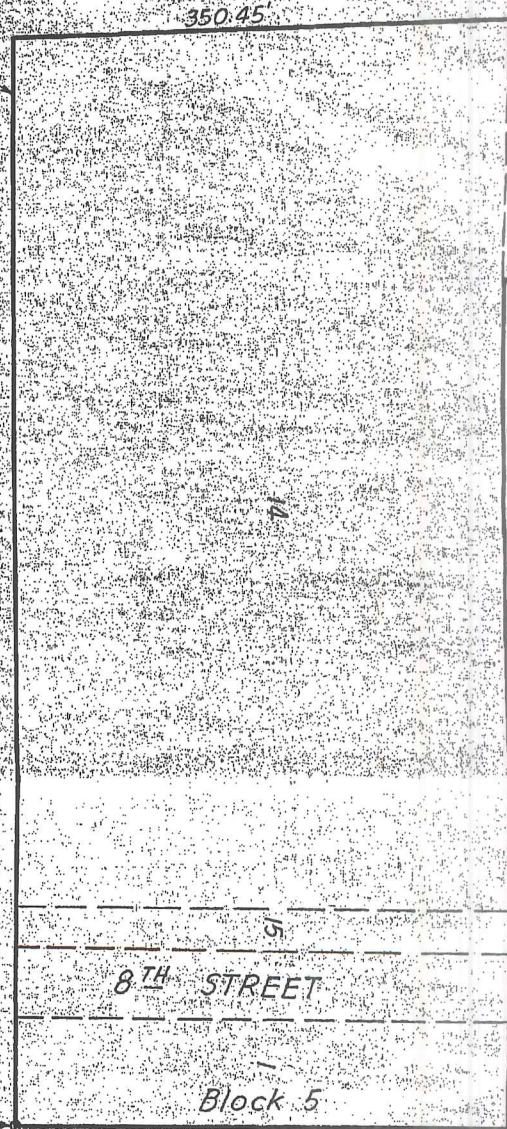
N. 0° 25' E  
146.62'

13

S. 0° 05' E  
153.20'

N. 89° 57' E  
617.62'

N. 2° 56' W  
350.45'



Existing North Corporate City Line,  
Nebraska City, Nebraska

S. 89° 57' W  
787.26'

SE Corner SW 1/4 NW 1/4 Sec 4 T 8 N, R 14 E  
of 6th Principal Meridian

DESCRIPTION OF TRACT OF LAND IN CITY OF NEBRASKA CITY, NEBRASKA, CHANGING DESCRIPTION OF BROADVIEW TERRACE TO CONFORM TO ACTUAL MEASUREMENTS.

A tract of land in the W 1/2 of the NW 1/4 of Section 4, T. 8 N., R. 14 E. of the 6th P.M. One County, Nebraska, more particularly described as follows: Beginning at the SE corner of the SW 1/4 of the NW 1/4 of aforesaid Section 4, thence S. 89° 57' W. 787.26 feet along the east-west centerline of said section 4 to the east line of 10th Street, Nebraska City, One County, Nebraska, thence N. 2° 56' W. 350.45 feet along the east line of 10th Street, thence N. 0° 45' E. 146.62 feet along the east line of 10th Street, thence N. 5° 26' 30" E. 602.45 feet along the east line of 10th Street to the north line of Block 3 extended east of Broadview Addition to Nebraska City, One County, Nebraska, thence N. 89° 56' W. 461.43 feet along the north line of blocks 3 and 4, Broadview Addition to Nebraska City, One County, Nebraska to the northwest corner of said Addition, thence N. 4° 24' E. 340.0 feet, thence N. 9° 24' E. 90.0 feet, thence N. 28° 24' E. 90.0 feet, thence N. 35° 24' E. 300.0 feet, thence N. 4° 25' 35" W. 194.78 feet, thence N. 84° 24' E. 347.0 feet, thence S. 3° 33' E. 197.78 feet, thence S. 35° 05' E. 270.0 feet, thence S. 29° 38' 10" E. 320.04 feet, thence S. 66° 37' W. 150.0 feet, thence S. 23° 23' E. 34.0 feet, thence S. 66° 37' W. 208.57 feet, thence S. 5° 26' 30" W. 111.66 feet, thence N. 87° 54' E. 60.0 feet, thence S. 0° 05' E. 153.20 feet, thence N. 89° 57' E. 617.62 feet to the east line of the said S.W. 1/4 of the N.W. 1/4 of said Section 4, thence S. 0° 03' W. 350.0 feet to the said S. E. corner of the S.W. 1/4 of the N.W. 1/4 of Section 4, the point of beginning, containing 20.6 acres more or less.

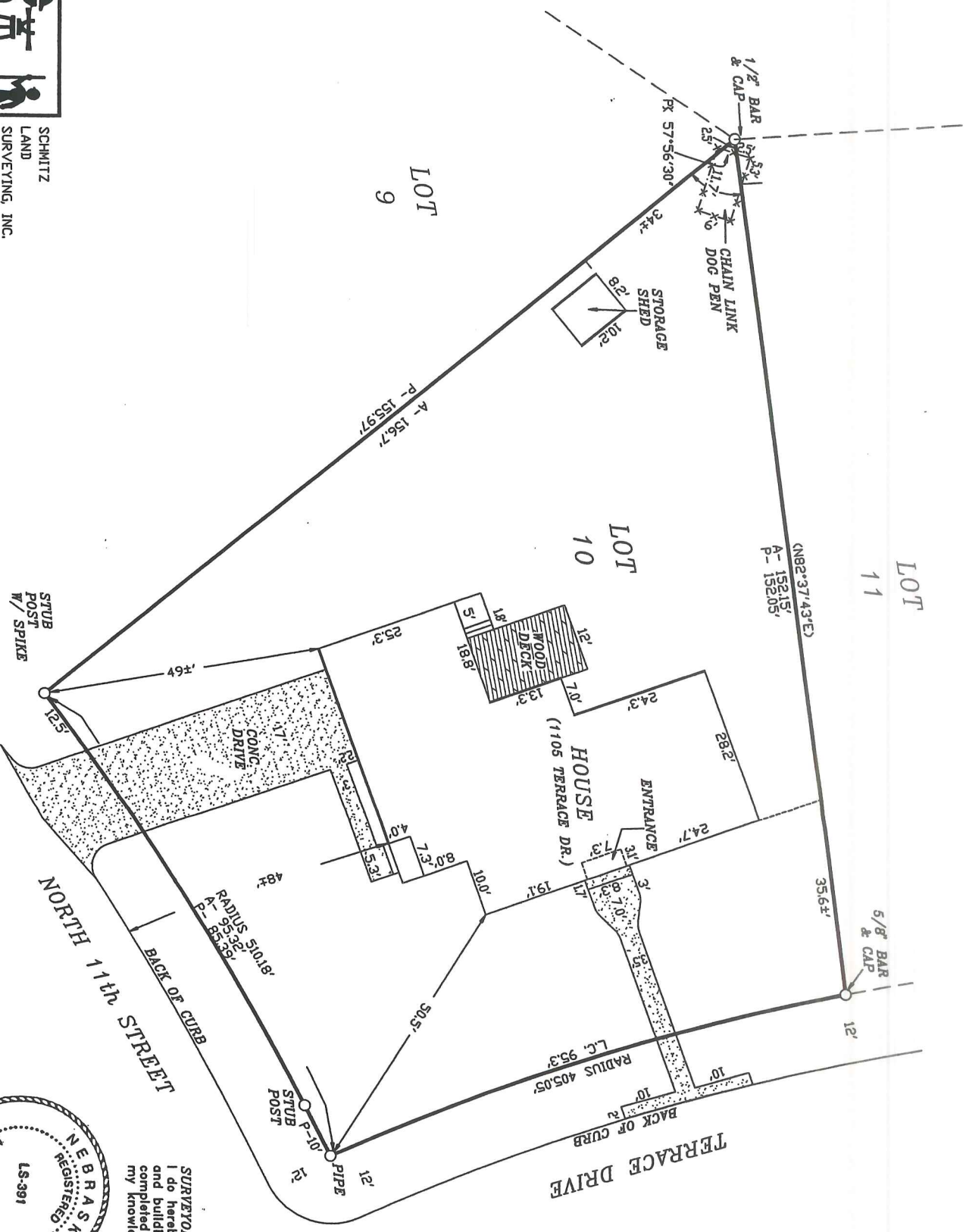
SUBJECTOR'S CERTIFICATE

I hereby certify that the above plat is a true and correct delineation of Broadview Terrace, a part of the NW 1/4 of Section 4, T. 8 N., R. 14 E. of the 6th P.M., One County, Nebraska.

Witness my hand this 27th day of December, 1987.

*Marvin L. Garber*  
Marvin L. Garber L.S. 3

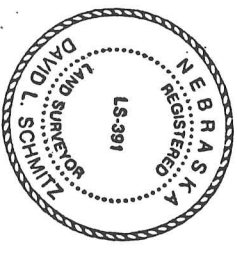
A SURVEY AND BUILDING LOCATIONS PLAT ON  
LOT 10, BLOCK 4, BROADVIEW TERRACE ADDITION TO  
NEBRASKA CITY, OTOE COUNTY, NEBRASKA



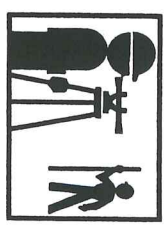
SCALE: 1" = 20'

○	FOUND CORNER
A-	ACTUAL DISTANCE
P-	PLAT DISTANCE
0	REVISIONS

**SURVEYOR'S CERTIFICATE**  
I do hereby certify that, under my personal supervision, this survey and building locations plat was prepared from an actual survey completed this 4th day of June 2008, and is correct to the best of my knowledge.



*David L. Schmitz*  
David Schmitz, Registered Land Surveyor  
Nebraska Reg. No. 391



SCHMITZ  
LAND  
SURVEYING, INC.  
406 PINEWOOD DRIVE  
NEBRASKA CITY, NE  
(402) 873-5907/9548  
DRAWN BY: Claudia J. J.