

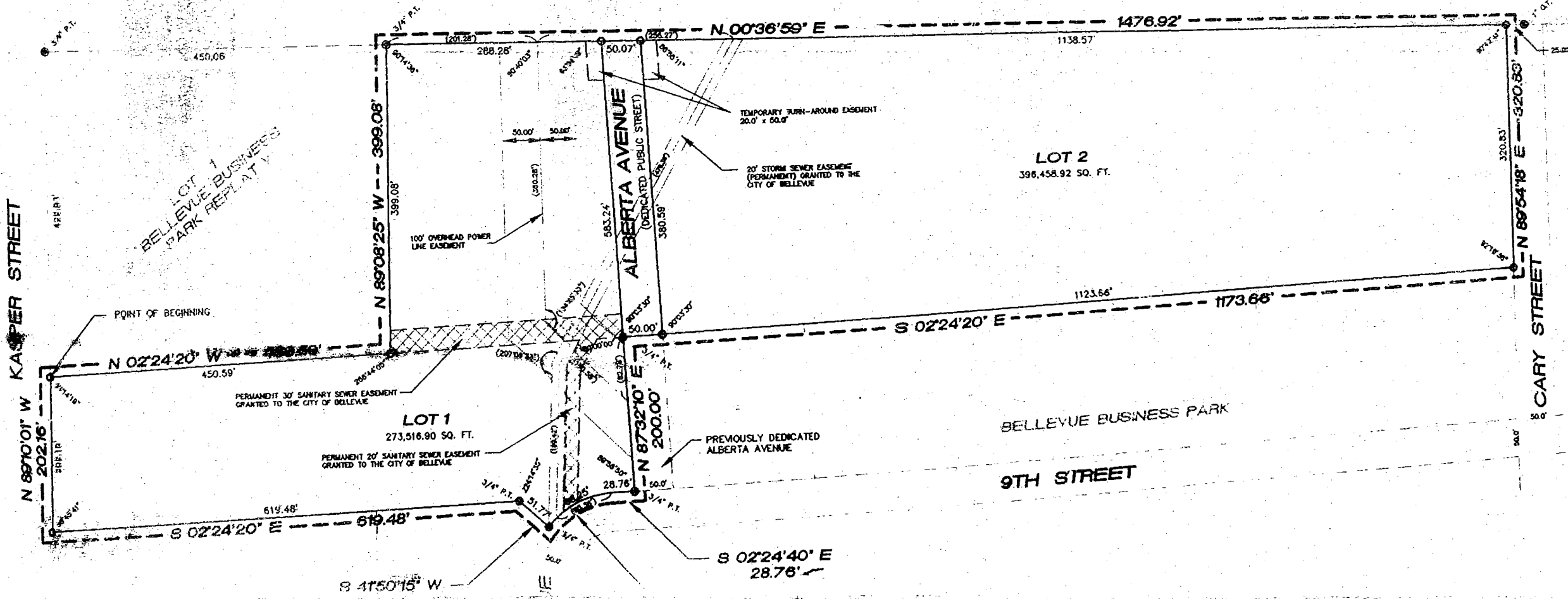
Counter _____
 Verify _____
 D.E. Dy
 Proof W
 Fee \$ 17.00
 Ck. Cash Chg

BEING A REPLAT OF LOTS 2 AND 3, BELLEVUE BUSINESS PARK REPLAT V,
 LOCATED IN THE EAST ONE-HALF OF SECTION 22 AND THE WEST ONE-HALF
 OF SECTION 23, TOWNSHIP 14 NORTH, RANGE 13 EAST OF THE 6TH P.M.,
 SARPY COUNTY, NEBRASKA.

LOTS 1 AND 2

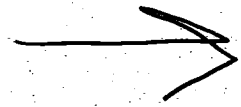
Replat VI

*125
STAMP
COPY*



BELLEVUE BUSINESS PARK REPLAT

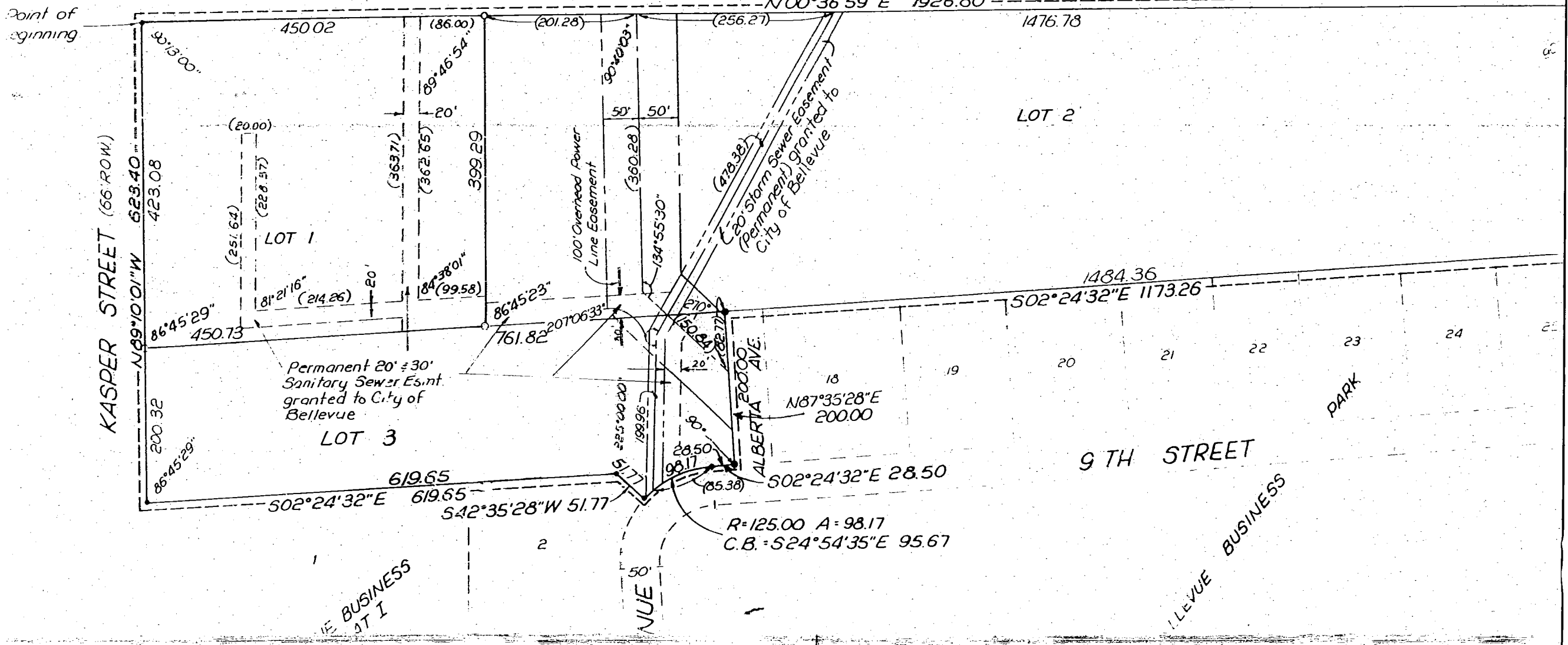
A REPLAT OF LOTS 1 & 2, BELLEVUE BUSINESS PARK REPLAT II
IN THE EAST 1/2 OF SECTION 22 AND THE WEST 1/2 OF SECTION
23, TOWNSHIP 14 NORTH, RANGE 13 EAST OF THE 6th P.M., SARPY
COUNTY, NEBRASKA.



LOTS 1, 2 & 3

Foot	_____
D.E.	_____
Verify	_____
Filed	_____
Checked	_____
Fee \$	17 ⁵⁰

25⁰⁰



BELLEVUE BUSINESS PARK REPLAT II

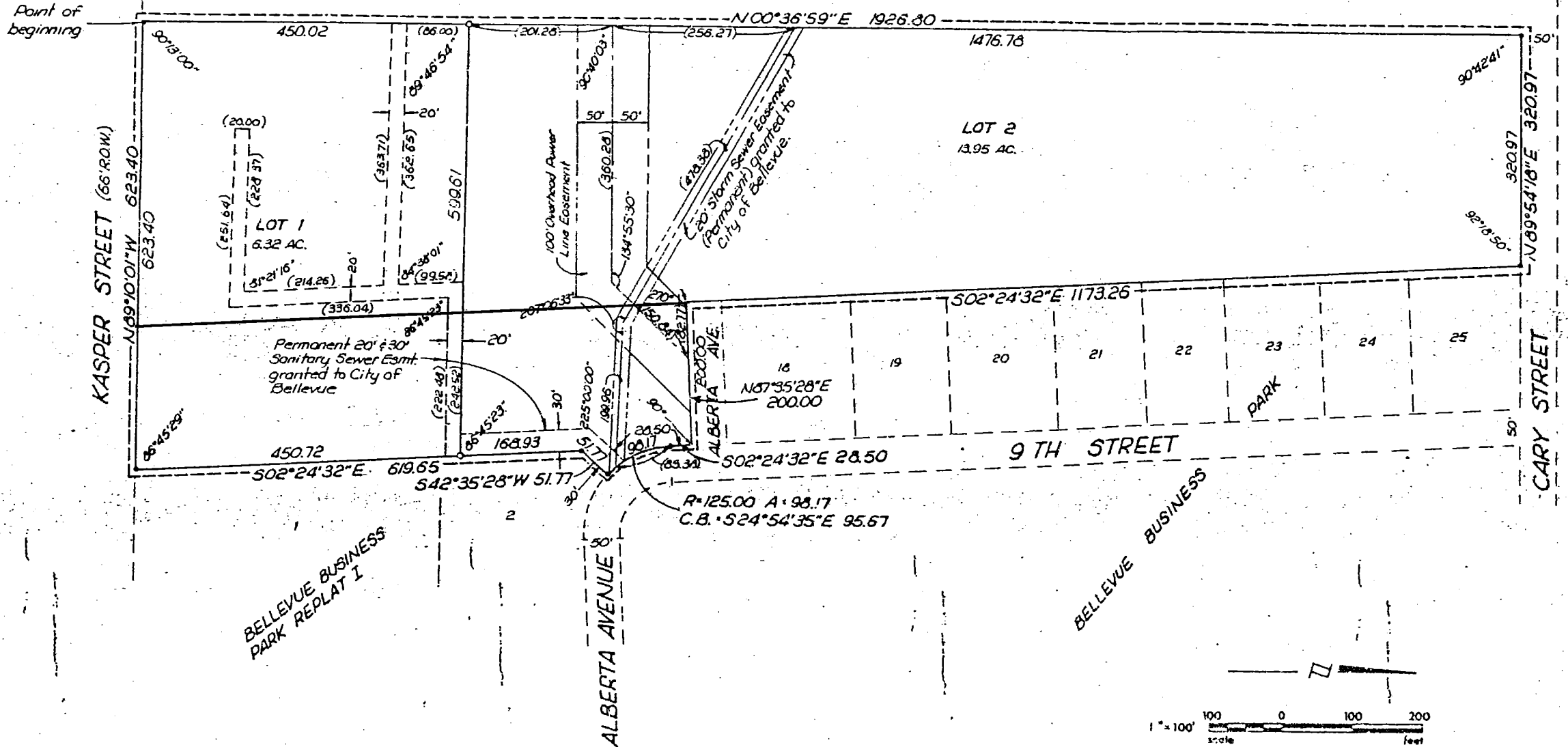
A REPLAT OF LOTS 17 & 26, BELLEVUE BUSINESS PARK, LOCATED IN THE EAST 1/2 OF SECTION 22 AND THE WEST 1/2 OF SECTION 23, TOWNSHIP 14 NORTH, RANGE 13 EAST OF THE 6th P.M., SARPY COUNTY, NEBRASKA.

FILED SARPY COUNTY
INSTRUMENT NUMBER
92-02770

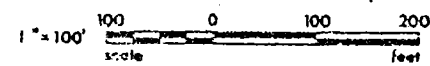
92 JUN 23 PM 3:59

Carol A. Clavin
REGISTER OF DEEDS

LOTS 1 AND 2



Proof
D.E.
Vent.
Film
Cher.
Exp.



• = Corners Found

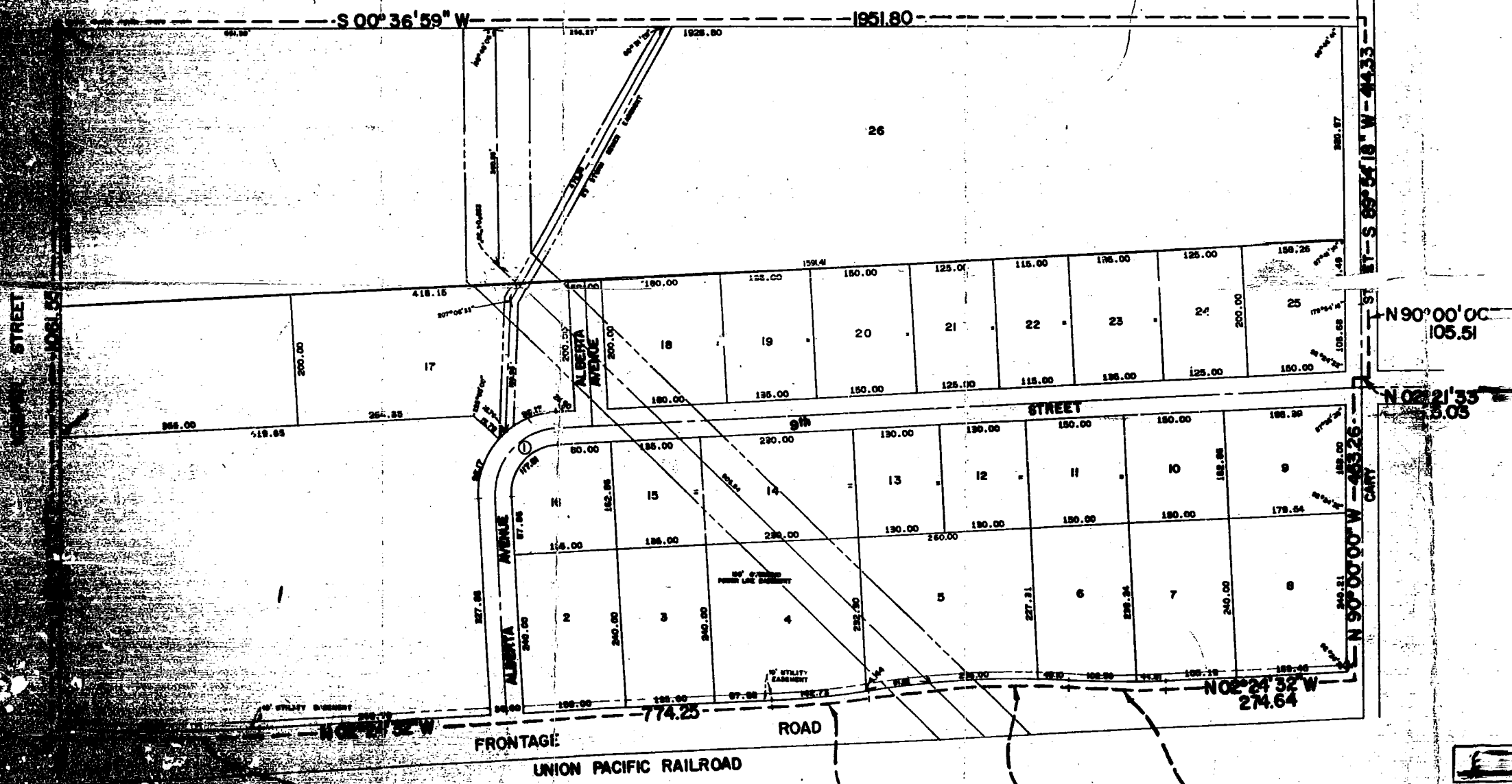
Belleve Business Park

APPROVAL OF SARPY COUNTY SURVEYOR
 I HEREBY APPROVE THIS REPEAT OF TAX LOT 7A THIS 5th DAY OF
July 1978.



Norman Whitney
 SARPY COUNTY SURVEYOR

FILED FOR RECORD 1-3-79 10:00 A 7 Plats
72 Carl L. Hibel REGISTER OF DEEDS, SARPY COUNTY, NEB. 10.00



Δ = 5° 54' 12"
 R = 2885.17
 T = 149.78
 D = 4.33461
 L = 297.28

Δ = 6° 22' 46"
 R = 1321.82
 T = 73.66
 D = 4.33461
 L = 147.17

Δ = 12° 45' 32"
 R = 1365.64
 T = 152.68
 D = 4.33461
 L = 304.10

Δ = 6° 22' 46"
 R = 1321.82
 T = 73.66
 D = 4.33461
 L = 147.17