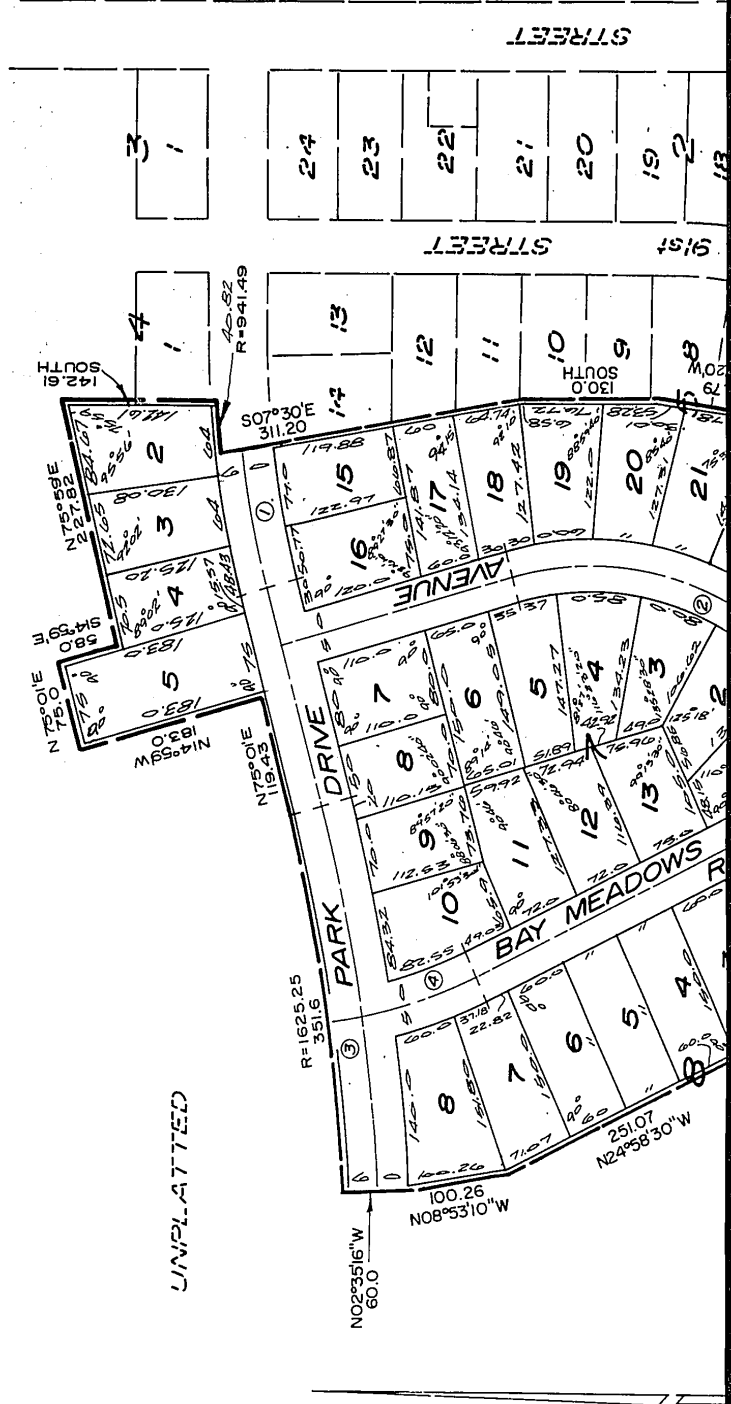


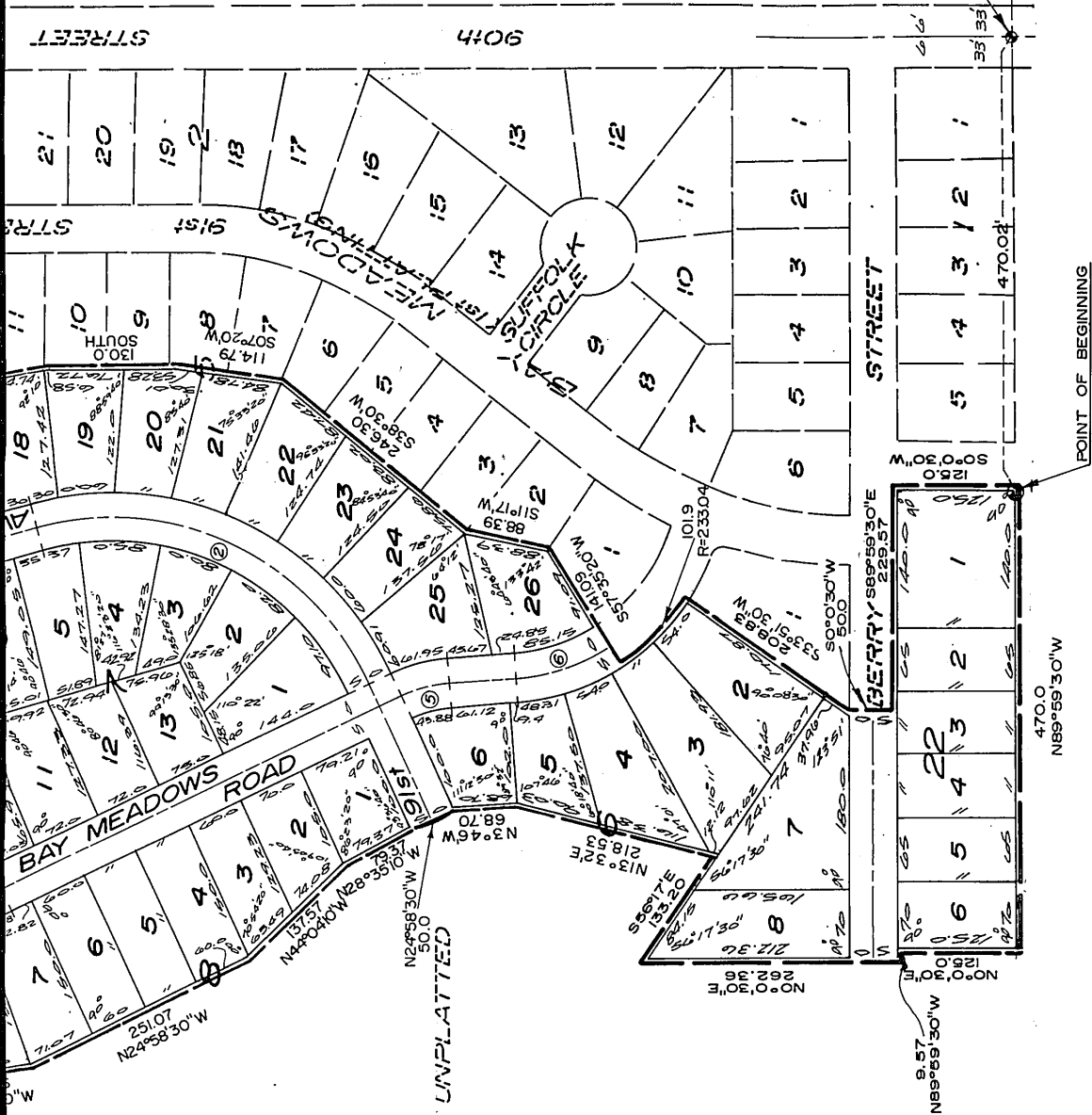
# BAY MEADOWS

LOTS 2 THRU 8, BLOCK 6; LOTS 15 THRU 26, BLOCK 5;  
 LOTS 1 THRU 13, BLOCK 7; LOTS 1 THRU 8, BLOCK 8; LOTS 2  
 THRU 5, BLOCK 4; LOTS 1 THRU 6, BLOCK 22; BEING A PLATTING  
 OF PART OF THE N.W. 1/4 OF SECTION 10, T14N, R12E OF THE  
 6th P.M., DOUGLAS COUNTY, NEBRASKA.



UNPLATTED

UNPLATTED



SE CORNER OF NW 1/4 OF SEC. 10, T14N, R12E, OF THE 6th P.M., DOUGLAS CO., NEBRASKA.

POINT OF BEGINNING

UNPLATTED

SCALE: 1" = 100'

☒ CURVE DATA

- ① Δ = 15°00'  
D = 6.285949  
T = 120.0  
L = 238.60  
R = 511.49
- ② Δ = 80°00'  
D = 19.230616  
T = 250.0  
L = 415.00  
R = 297.94
- ③ Δ = 19°30'  
D = 3.46146  
T = 240.0  
L = 476.68  
R = 1655.25
- ④ Δ = 27°40'10"  
D = 11.758773  
T = 120.0  
L = 235.31  
R = 487.26
- ⑤ Δ = 20°42'20"  
D = 5.926309  
T = 26.75  
L = 52.92  
R = 146.43
- ⑥ Δ = 64°00'  
D = 27.54076  
T = 130.0  
L = 232.38  
R = 208.04

NOTE:  
DISTANCES SHOWN ON CURVES  
ARE ARC DISTANCES AND ARE  
NOT CHORD DISTANCES.

SURVEYOR'S CERTIFICATE

I hereby certify that I have accurately surveyed and staked, with iron pipe, all corners of all lots, streets, angle points and ends of all curves in BAY MEADOWS, Lots 2 through 5 inclusive, Block 4; Lots 15 through 26 inclusive, Block 5; Lots 2 through 8 inclusive, Block 6; Lots 1 through 13 inclusive, Block 7; Lots 1 through 8 inclusive, Block 8; and Lots 1 through 6 inclusive, Block 22; being a platting of part of the East 1/2 of the Northwest 1/4 of Section 10, T 14 N, R 12 E, of the 6th P.M., Douglas County, Nebraska, to-wit: Beginning at a point N 89° 59' 30" W, 470.02 ft. from the Southeast corner of said Northwest 1/4 of Section 10; said point of beginning also being the intersection of the West line of 91st Street and the South line of said Northwest 1/4 of Section 10; thence continuing N 89° 59' 30" W, 470.0 ft.; thence N 0° 00' 30" E, 125.0 ft.; thence N 89° 59' 30" W, 9.57 ft.; thence N 0° 00' 30" E, 262.36 ft.; thence S 56° 17' E, 133.20 ft.; thence N 13° 32' E, 218.53 ft.; thence N 3° 46' W, 68.70 ft.; thence N 24° 58' 30" W, 50.0 ft.; thence N 28° 35' 10" W, 79.37 ft.; thence N 44° 04' 10" W, 137.57 ft.; thence N 24° 58' 30" W, 251.07 ft.; thence N 08° 53' 10" W, 100.26 ft.; thence N 02° 35' 16" W, 60.0 ft. to the North line of Park Drive; thence on a curve to the left and along the North line of Park Drive (radius being 1625.25 ft.) for a curve distance 351.6 ft. to a point of tangent; thence N 75° 01' E along the North line of Park Drive, 119.43 ft.; thence N 14° 59' W, 183.0 ft.; thence N 75° 01' E, 75.0 ft.; thence S 14° 59' E, 58.0 ft.; thence N 75° 59' E, 227.82 ft.; thence due South 142.61 ft. to a point on the North line of Park Drive; thence on a curve to the left (radius being 941.49 ft.) and along the North line of Park Drive for a curve distance of 40.82 ft.; thence S 07° 30' E, 311.20 ft.; thence due South 130.0 ft.; thence S 07° 20' W, 114.79 ft.; thence S 38° 30' W, 246.30 ft.; thence S 11° 17' W, 88.39 ft.; thence S 57° 35' 20" W, 141.09 ft. to a point on the Westerly side of Bay Meadows Road; thence on a curve to the left (radius being 233.04 ft.) and along the Southwesterly line of Bay Meadows Road for a curve distance, 101.90 ft.; thence S 33° 51' 30" W, 208.83 ft.; thence S 0° 00' 30" W, 50.0 ft.; thence S 89° 59' 30" E, 229.57 ft. thence S 0° 00' 30" W, 125.0 ft. to the point of beginning. (East line of said Northwest 1/4 of Section 10 assumed North-South in direction.)

March 26, 1962 Date

Ivan O. Rold L.S. 99

DEDICATION

KNOW ALL MEN BY THESE PRESENTS that We, RALSTON DEVELOPMENT COMPANY, INC. (a Nebraska Corporation), DONALD E. TURNER, HENRY A. McCAW, ROBERT S. MASTERS, KENNETH H. TOLLIVER, and LOUIS A. McFARLING (Owners); and the CENTER BANK (a Nebraska Corporation), DELMAR E. DIETZ, and ALMA P. DIETZ, husband and wife; DOROTHY N. SORENSEN and CARL C. SORENSEN, husband and wife; and EVELYN L. CRAWFORD, unmarried (Mortgagees); being respectively the sole owners and mortgage holders of the land described within the Surveyor's Certificate and embraced within this plat have caused the same to be subdivided into lots, blocks, and streets, to be numbered and named as shown, said Subdivision to be hereafter known as BAY MEADOWS, and we do hereby dedicate to the public, for public use, the streets as shown on this plat; and, further, we do hereby ratify and approve of the disposition of our property as shown on this plat. We do further grant a perpetual license in favor of and granted to the Omaha Public Power District and the Northwestern Bell Telephone Company, their successors and assigns, to erect and operate, maintain, repair and renew poles with the necessary supports, sustaining wires, cross-arms, guys and anchors, and other instrumentalities, and to extend thereon wires for the carrying and transmission of electric current for light, heat, and power, and for all telephone and telegraph and message service over, upon, or under a 5-foot strip of land adjoining the rear and side boundary lines of said lots (these easements apply only to land within said Subdivision); said license being granted for the use and benefit of all present and future owners of lots in said Subdivision; provided, however, that said side lot line easement is granted upon the specific condition that if both said utility companies fail to construct poles and wires along any of said side lot lines within 36 months of the date hereof, or, if any poles or wires are constructed but hereafter removed without replacement within 60 days after their removal, then this side line easement shall automatically terminate and become void as to such unused or abandoned easement ways.

RALSTON DEVELOPMENT COMPANY, INC.
Louis A. McFarling, President
Russell Herwig, Secretary
Donald E. Turner
Henry A. McCaw
Robert S. Masters
Kenneth H. Tolliver
Louis A. McFarling

CENTER BANK
W. B. Hargleroad, Jr., President
F. Mack Bristol, Asst. Secretary
Delmar E. Dietz
Alma P. Dietz
Dorothy N. Sorensen
Carl C. Sorensen
Evelyn L. Crawford

ACKNOWLEDGMENT OF NOTARY

STATE OF NEBRASKA)
COUNTY OF DOUGLAS) ss
On this 26th day of March, 1962, before me a Notary Public, duly commissioned and qualified in and for said County, appeared Louis A. McFarling and Russell Herwig, who are personally known by me to be respectively the President and Secretary of the Ralston Development Company, Inc., a Nebraska Corporation; Donald E. Turner, Henry A. McCaw, Robert S. Masters, Kenneth H. Tolliver, and Louis A. McFarling, Owners of the property described in the Surveyor's Certificate on this plat, and they did acknowledge their execution of the foregoing Dedication to be their voluntary act and deed, and the voluntary act and deed of said corporation; and further appeared before me W. B. Hargleroad, Jr., and F. Mack Bristol, who are personally known by me to be respectively the President and Secretary of the Center Bank, a Nebraska Corporation; Delmar E. Dietz and Alma P. Dietz, husband and wife; Dorothy N. Sorensen and Carl C. Sorensen, husband and wife; and Evelyn L. Crawford, unmarried; Mortgagees of the property described within the Surveyor's Certificate on this plat, and they did acknowledge their execution of the foregoing Dedication to be their voluntary act and deed and the voluntary act and deed of said Corporation.

WITNESS my hand and official seal, in Omaha, Nebraska, the date last aforesaid.
My commission expires on the 14th day of October, 1966.

Notary Public

COUNTY TREASURER'S CERTIFICATE

This is to certify that I find no regular or special taxes, due or delinquent against the property described in the Surveyor's Certificate and embraced in this plat as shown by the records of this office, this 27th day of March, 1962.

Douglas County Treasurer
Deputy

APPROVAL OF CITY ENGINEER

I hereby approve the plat of BAY MEADOWS on this 11 th day of April, 1962.

A. P. Albend  
City Engineer

APPROVAL OF CITY PLANNING BOARD

This plat of BAY MEADOWS was approved by the City Planning Board of the City of Omaha this 18 th day of April, 1962.

Walter W. Karp  
Chairman, City Planning Board

APPROVAL OF OMAHA CITY COUNCIL

This plat of BAY MEADOWS was approved and accepted by the City Council of Omaha on the 15 day of May, 1962.

Harry J. Johnston  
President

Mary G. Sullivan  
City Clerk

ACKNOWLEDGMENT OF GRADING

I hereby certify that the streets within this plat are built to the grades approved by the City Engineer and filed with the City, this 20 day of MARCH, 1962.

Donald G. Lamp  
Donald G. Lamp, P.E.  
REGISTERED PROFESSIONAL ENGINEER  
No. 1001  
EXPIRES 12-31-62  
E-905

DOUGLAS COUNTY  
SURVEYOR'S OFFICE  
J. A. Swaboda

**LAMP, RYMERSON & ASSOCIATES**  
CONSULTING ENGINEERS - LAND SURVEYORS

SCALE AS SHOWN  
DRAWN BY R.L.H.  
DATE 1-19-62  
REVISIONS

**BAY MEADOWS**

**FINAL PLAT**

DRAWING NUMBER  
**60-24**