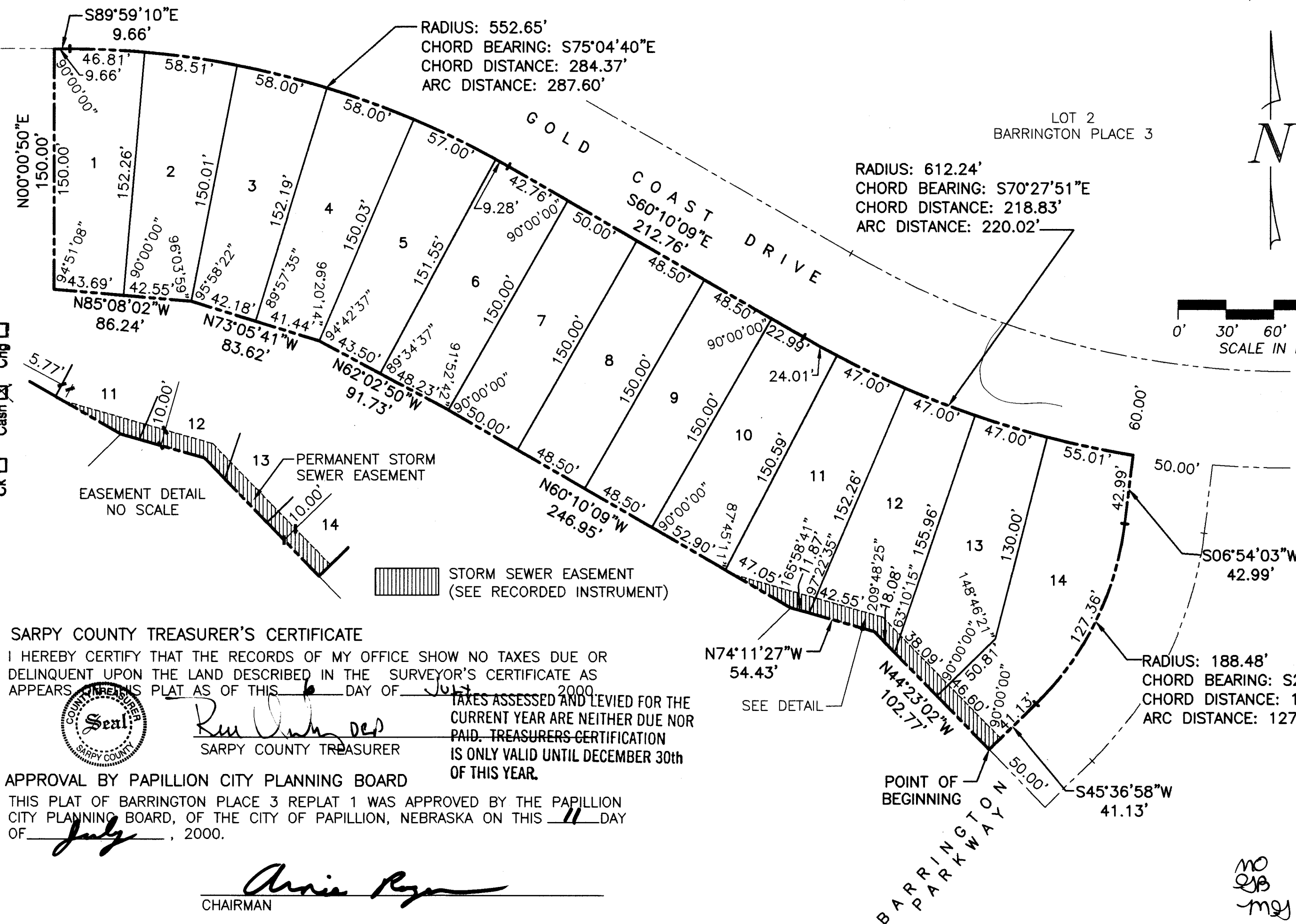


# BARRINGTON PLACE 3 REPLAT 1

LOTS 1 THRU 14, INCLUSIVE

BEING A REPLAT OF LOTS 3 THRU 9, INCLUSIVE, BARRINGTON PLACE 3, A SUBDIVISION AS SURVEYED, PLATTED AND RECORDED IN SARPY COUNTY, NEBRASKA.



## SARPY COUNTY TREASURER'S CERTIFICATE

I HEREBY CERTIFY THAT THE RECORDS OF MY OFFICE SHOW NO TAXES DUE OR DELINQUENT UPON THE LAND DESCRIBED IN THE SURVEYOR'S CERTIFICATE AS APPEARS IN THIS PLAT AS OF THIS July DAY OF 2000. TAXES ASSESSED AND LEVIED FOR THE CURRENT YEAR ARE NEITHER DUE NOR PAID. TREASURER'S CERTIFICATION IS ONLY VALID UNTIL DECEMBER 30th OF THIS YEAR.

## APPROVAL BY PAPILLION CITY PLANNING BOARD

THIS PLAT OF BARRINGTON PLACE 3 REPLAT 1 WAS APPROVED BY THE PAPILLION CITY PLANNING BOARD, OF THE CITY OF PAPILLION, NEBRASKA ON THIS 11 DAY OF July, 2000.

CHAIRMAN

## ACCEPTANCE OF PAPILLION CITY COUNCIL

THIS PLAT OF BARRINGTON PLACE 3 REPLAT 1 WAS APPROVED AND ACCEPTED BY THE PAPILLION CITY COUNCIL, OF THE CITY OF PAPILLION, NEBRASKA ON THIS 3rd DAY OF July, 2000, IN ACCORDANCE WITH THE STATE STATUTES OF NEBRASKA.

## APPROVAL BY PAPILLION CITY ENGINEER

THIS PLAT OF BARRINGTON PLACE 3 REPLAT 1 WAS APPROVED BY THE PAPILLION CITY ENGINEER OF THE CITY OF PAPILLION, NEBRASKA ON THIS 11th DAY OF July, 2000.

## REVIEW BY THE SARPY COUNTY SURVEYOR'S OFFICE

THIS PLAT OF BARRINGTON PLACE 3 REPLAT 1 WAS REVIEWED BY THE SARPY COUNTY SURVEYOR'S OFFICE ON THIS 5th DAY OF July, 2000.

## SURVEYOR'S CERTIFICATE

I HEREBY CERTIFY THAT I HAVE MADE A BOUNDARY SURVEY OF THE SUBDIVISION DESCRIBED HEREIN AND THAT PERMANENT MARKERS HAVE BEEN FOUND OR SET AT ALL CORNERS OF SAID BOUNDARY AND THAT PERMANENT MARKERS HAVE BEEN SET AT ALL LOT CORNERS, ANGLE POINTS AND AT THE ENDS OF ALL CURVES WITHIN SAID SUBDIVISION TO BE KNOWN AS BARRINGTON PLACE 3 REPLAT 1, LOTS 1 THRU 14, INCLUSIVE, BEING A REPLAT OF LOTS 3 THRU 9, INCLUSIVE, BARRINGTON PLACE 3, A SUBDIVISION AS SURVEYED, PLATTED AND RECORDED IN SARPY COUNTY, NEBRASKA, DESCRIBED AS FOLLOWS: BEGINNING AT THE SE CORNER OF SAID LOT 9; THENCE NORTHWESTERLY ON THE SOUTHERLY LINES OF SAID LOTS 3 THRU 9, INCLUSIVE, ON THE FOLLOWING DESCRIBED 6 COURSES; THENCE N44°23'02"W 102.77 FEET; THENCE N74°11'27"W 54.43 FEET; THENCE N60°10'09"W 246.95 FEET; THENCE N62°02'50"W 91.73 FEET; THENCE N73°05'41"W 83.62 FEET; THENCE N85°08'02"W 86.24 FEET TO THE SW CORNER OF SAID LOT 3; THENCE N00°00'50"E 150.00 FEET ON THE WESTERLY LINE OF SAID LOT 3 TO THE NW CORNER THEREOF; THENCE SOUTHEASTERLY ON THE NORTHERLY LINE OF SAID LOTS 3 THRU 9, INCLUSIVE, ON THE FOLLOWING DESCRIBED 4 COURSES; THENCE S89°59'10"E 9.66 FEET; THENCE SOUTHEASTERLY ON A 552.65 FOOT RADIUS CURVE TO THE RIGHT, CHORD BEARING S75°04'40"E, CHORD DISTANCE 284.37 FEET, AN ARC DISTANCE OF 287.60 FEET; THENCE S60°10'09"E 212.76 FEET; THENCE SOUTHEASTERLY ON A 612.24 FOOT RADIUS CURVE TO THE LEFT, CHORD BEARING S70°27'51"E, CHORD DISTANCE 218.83 FEET, AN ARC DISTANCE OF 220.02 FEET TO THE NE CORNER OF SAID LOT 9; THENCE S06°54'03"W 42.99 FEET ON THE NON-TANGENT EASTERLY LINE OF SAID LOT 9; THENCE SOUTHWESTERLY ON THE EASTERLY LINE OF SAID LOT 9 ON A 188.48 FOOT RADIUS CURVE TO THE RIGHT, CHORD BEARING S26°15'30"W, CHORD DISTANCE 124.95 FEET, AN ARC DISTANCE OF 127.36 FEET; THENCE S45°36'58"W 41.13 FEET ON THE EASTERLY LINE OF SAID LOT 9 TO THE POINT OF BEGINNING.

APRIL 15, 2000

DATE:

## DEDICATION

KNOW ALL MEN BY THESE PRESENTS: THAT WE, BARRINGTON PLACE LIMITED PARTNERSHIP, A NEBRASKA LIMITED PARTNERSHIP, BEING THE OWNERS OF THE LAND DESCRIBED WITHIN THE SURVEYOR'S CERTIFICATE AND EMBRACED WITHIN THIS PLAT, HAVE CAUSED SAID LAND TO BE SUBDIVIDED INTO LOTS TO BE NUMBERED AS SHOWN, SAID SUBDIVISION TO BE HEREAFTER KNOWN AS BARRINGTON PLACE 3 REPLAT 1, AND WE DO HEREBY RATIFY AND APPROVE OF THE DISPOSITION OF OUR PROPERTY AS SHOWN ON THIS PLAT, AND WE DO FURTHER GRANT A PERPETUAL EASEMENT TO THE OMAHA PUBLIC POWER DISTRICT, U.S. WEST COMMUNICATIONS, INC., AND ANY COMPANY WHICH HAS BEEN GRANTED A FRANCHISE TO PROVIDE A CABLE TELEVISION SYSTEM IN THE AREA TO BE SUBDIVIDED, THEIR SUCCESSORS AND ASSIGNS, TO ERECT, OPERATE, MAINTAIN, REPAIR, AND RENEW POLES, WIRES, CROSSARMS, DOWN GUYS AND ANCHORS, CABLES, CONDUITS AND OTHER RELATED FACILITIES AND TO EXTEND THEREON WIRES OR CABLES FOR THE CARRYING AND TRANSMISSION OF ELECTRIC CURRENT FOR LIGHT, HEAT, AND POWER FOR THE TRANSMISSION OF SIGNALS AND SOUNDS OF ALL KINDS AND THE RECEPTION THEREOF, INCLUDING SIGNALS PROVIDED BY A CABLE TELEVISION SYSTEM AND THEIR RECEPTION, ON, OVER, THROUGH, UNDER AND ACROSS A FIVE (5') FOOT WIDE STRIP OF LAND ABUTTING ALL FRONT AND SIDE LOT LINES EXCEPT THE COMMON SIDE LOT LINES BETWEEN THE FOLLOWING LOTS; 1 AND 2, 3 AND 4, 5 AND 6, 7 AND 8, 9 AND 10, 11 AND 12, 13 AND 14; AND AN EIGHT (8') FOOT WIDE STRIP OF LAND ABUTTING REAR LOT LINES NO PERMANENT BUILDINGS, TREES, RETAINING WALLS OR LOOSE ROCK WALLS SHALL BE PLACED IN SAID EASEMENT WAYS, BUT THE SAME MAY BE USED FOR GARDENS, SHRUBS, LANDSCAPING, SIDEWALKS, DRIVEWAYS, AND OTHER PURPOSES THAT DO NOT THEN OR LATER INTERFERE WITH THE AFORESAID USES OR RIGHTS HEREIN GRANTED.

BARRINGTON PLACE LIMITED PARTNERSHIP, A NEBRASKA LIMITED PARTNERSHIP  
BY: OLD DOMINION LAND COMPANY, A NEBRASKA CORPORATION, ITS GENERAL PARTNER

BY: Arthur D. Grube  
ARTHUR D. GRUBE, PRESIDENT

## ACKNOWLEDGEMENT OF NOTARY

STATE OF NEBRASKA)  
COUNTY OF SARPY ) SS

THE FOREGOING DEDICATION WAS ACKNOWLEDGED BEFORE ME THIS 5th DAY OF August, 2000 BY ARTHUR D. GRUBE, PRESIDENT OF OLD DOMINION LAND COMPANY, ON BEHALF OF SAID COMPANY AND AS GENERAL PARTNER AND ON BEHALF OF BARRINGTON PLACE LIMITED PARTNERSHIP.

NOTARY PUBLIC

GENERAL NOTARY-STATE OF NEBRASKA  
MICHAEL C. STEENBOCK  
My Comm. Exp. Sept. 25, 2002

THOMPSON, DREESSEN & DORNER, INC.  
2 CONSULTING ENGINEERS & LAND SURVEYORS

10836 OLD MILL RD.  
OMAHA, NE 68154  
(402) 330 - 8860

492-114

A492114C.DWG