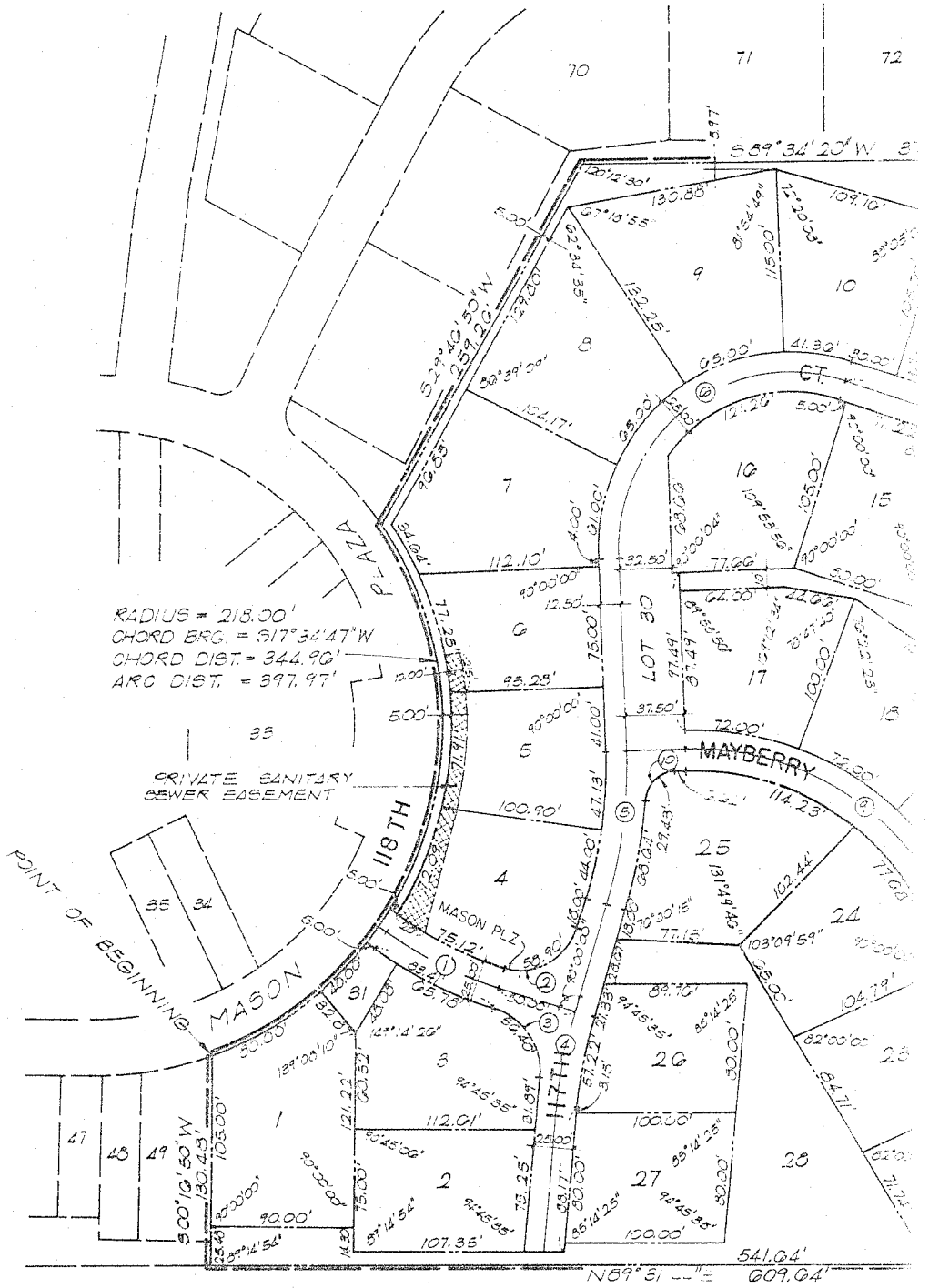


1719-678

# BRANDON P

LOT 1 THRU 31, INCLUSIVE

BEING A PLATTING OF PART OF THE SW 1/4 OF SECTION 1715N, R12E OF THE 6TH P.M., DOUGLAS COUNTY, NEBRASKA IN ACCORDANCE WITH THE CLUSTER REGULATIONS OF 53 AND 55 OF THE OMAHA MUNICIPAL CODE.



C U R V E				D A T A			
1. $\Delta = 19^{\circ}00'00''$	2. $\Delta = 90^{\circ}00'00''$	3. $\Delta = 76^{\circ}14'00''$	4. $\Delta = 11^{\circ}46'00''$				
D = 23.9701	D = 152.7888	D = 138.6972	D = 19.68028				
T = 40.00'	T = 37.50'	T = 33.59'	T = 30.00'				
L = 79.27'	L = 58.90'	L = 50.40'	L = 59.79'				
R = 239.03'	R = 37.50'	R = 41.31'	R = 291.13'				
5. $\Delta = 110^{\circ}00'00''$	7. $\Delta = 40^{\circ}50'45''$	8. $\Delta = 40^{\circ}50'45''$	9. $\Delta = 65^{\circ}00'00''$				
D = 52.79259	D = 95.493	D = 95.493	D = 82.8908				
T = 155.00'	T = 25.99'	T = 25.99'	T = 117.50'				
L = 208.37'	L = 49.00'	L = 49.00'	L = 200.75'				
R = 108.53'	R = 60.00'	R = 60.00'	R = 174.20'				



SURVEYOR'S CERTIFICATE

I HEREBY CERTIFY THAT I HAVE MADE A BOUNDARY SURVEY OF THE SUBDIVISION HEREIN AND THAT IRON PIPES HAVE BEEN PLACED AT ALL CORNERS OF SAID BOUNDARY AND THAT IRON PIPES WILL BE PLACED AT ALL LOT CORNERS, ANGLE POINTS AND AT THE ENDS OF ALL CURVES...

DATE August 10, 1983

James D. Wanner REGISTERED LAND SURVEYOR

DEDICATION

KNOW ALL MEN BY THESE PRESENTS: THAT M. FIRST NATIONAL BANK OF OHMA, BEING THE OWNER OF THE LAND DESCRIBED WITHIN THE SURVEYOR'S CERTIFICATE, AND EMBRACED WITHIN THIS PLAT, HAVE CAUSED SAID LAND TO BE SUBDIVIDED INTO LOTS...

FIRST NATIONAL BANK OF OHMA

Robert Hark and Bernice Simon

ACKNOWLEDGMENT OF MURKIN

STATE OF NEBRASKA COUNTY OF DODGE

ON THIS 17th day of August 1983, before me, a Notary Public, duly commissioned and qualified in and for said county, appeared Robert Hark and Bernice Simon who are personally known by me to be...

MY COMMISSION EXPIRES: Jan 4, 1987



Notary Public

COUNTY TREASURER'S CERTIFICATE

THIS IS TO CERTIFY THAT I FIND NO REGULAR OR SPECIAL TAXES, DUE OR DELINQUENT AGAINST THE PROPERTY DESCRIBED IN THE SURVEYOR'S CERTIFICATE AND EMBRACED IN THIS PLAT...

REPORT

Douglas County Treasurer

APPROVAL OF CITY ENGINEER

I HEREBY APPROVE THE PLAT OF BRANDON PARK ON THIS 24th DAY OF August 1983.

Ray L. Heumann City Engineer

I HEREBY CERTIFY THAT ADEQUATE PROVISIONS HAVE BEEN MADE FOR COMPLIANCE WITH CHAPTER 53 OF THE OHMA MUNICIPAL CODE.

December 7, 1983

Ray L. Heumann City Engineer

APPROVAL OF CITY PLANNING BOARD

THIS PLAT OF BRANDON PARK WAS APPROVED BY THE CITY PLANNING BOARD OF THE CITY OF OHMA, THIS 14 DAY OF SEPT. 1983.

Ray L. Heumann Chairman

APPROVAL OF OHMA CITY COUNCIL

THIS PLAT OF BRANDON PARK WAS APPROVED AND ACCEPTED BY THE CITY COUNCIL OF OHMA THIS 25th DAY OF October 1983.

Traci Kallay Bernice Simon Mayor City Clerk

REVIEW BY DODGE COUNTY SURVEYOR

THIS PLAT OF BRANDON PARK WAS REVIEWED BY THE DODGE COUNTY SURVEYOR'S OFFICE ON THIS 16th DAY OF August 1983.

John D. Banks Surveyor



BRANDON PARK

THOMPSON, HERRISCH & DORNER Consulting Engineers & Land Surveyors

