

NAME OF ADDITION BENT CREEK

LEGAL DESCRIPTION Lots 149 thru 349, inclusive and OutLot "A"
Being a platting of part of Section 15, T15N, R11E of the 6th P.M.,
Douglas County, Nebraska

PLAT IN BACK OF BOOK

DEEDS _____ BOOK 92 PAGE 291

MORTGAGE _____ BOOK 92 PAGE 291

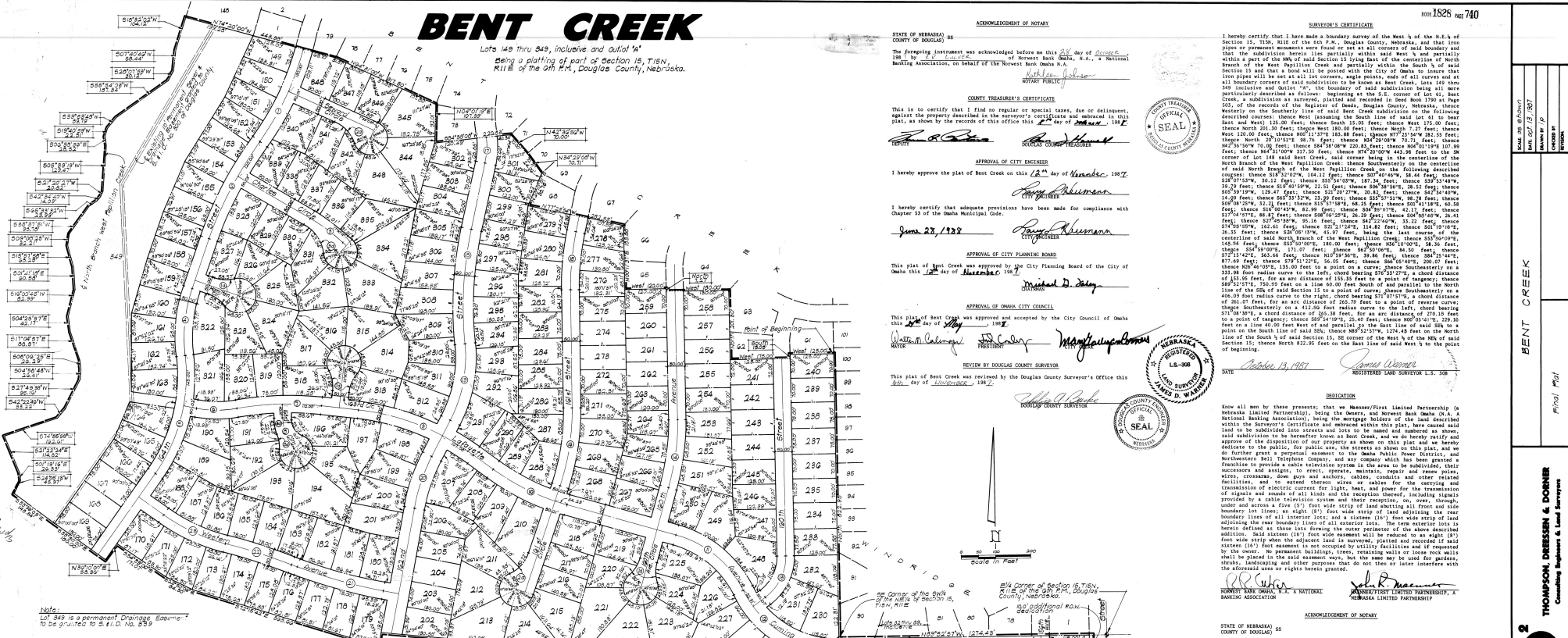
PLAT _____ BOOK 1828 PAGE 740

PLAT CABINET 4/19

FIELD BOOK # MC- 3525

#6927 ENTERED IN NUMERICAL INDEX AND RECORDED IN THE REGISTER OF DEEDS OFFICE IN DOUGLAS COUNTY, NEBRASKA \$106.50
28 DAY OF JUNE 1988 AT 2:45pm M. GEORGE J. BUGLEWICZ, REGISTER OF DEEDS

5278



Centerline Curve Data

Station	Bearing	Distance	Radius	Chord	Chord Bearing	Delta
1.4 + 27.9020	S 47°11'00"	8.84	187.9000'	8.44	287°00'00"	0.40
1.4 + 36.7520	S 54°52"	11.7497	18.3461	11.6498	271°50'24"	0.8993
1.4 + 48.89	S 41°57"	14.78	193.20	14.6250	292°18'57"	0.2630
1.4 + 56.44	L 18°48"	11.8957	1806.85	11.8801	173°09'01"	0.0156
1.4 + 70.00	R 441.70'	R 492.25'	R 492.25'	R 491.84'	R 93.00"	0.0000
1.4 + 94.00	S 47°30'00"	12.47	207.9000'	12.24	287°02'59"	0.23
1.4 + 106.00	D 103.850'	D 103.850'	D 103.850'	D 103.850'	D 90.0000"	0.0000
1.4 + 128.33	T 50.20"	T 120.00"	T 187.68'	T 180.11'	T 78.00"	0.8959
1.4 + 144.22	T 41.35"	T 105.00"	L 258.99'	L 258.99'	L 99.0000"	0.0000
1.4 + 161.93	R 141.30'	R 102.20'	R 942.54'	R 942.54'	R 309.99'	0.3099
1.4 + 171.00	S 47°30'00"	10.44	207.9000'	10.21	287°02'59"	0.23
1.4 + 180.00	D 103.850'	D 103.850'	D 103.850'	D 103.850'	D 90.0000"	0.0000
1.4 + 188.93	T 50.20"	T 120.00"	T 187.68'	T 180.11'	T 78.00"	0.8959
1.4 + 201.00	T 41.35"	T 105.00"	L 258.99'	L 258.99'	L 99.0000"	0.0000
1.4 + 218.93	R 141.30'	R 102.20'	R 942.54'	R 942.54'	R 309.99'	0.3099
1.4 + 229.00	S 47°30'00"	8.84	187.9000'	8.44	287°00'00"	0.40
1.4 + 240.00	S 47°30'00"	8.84	187.9000'	8.44	287°00'00"	0.40
1.4 + 251.00	S 47°30'00"	8.84	187.9000'	8.44	287°00'00"	0.40
1.4 + 262.00	S 47°30'00"	8.84	187.9000'	8.44	287°00'00"	0.40
1.4 + 273.00	S 47°30'00"	8.84	187.9000'	8.44	287°00'00"	0.40
1.4 + 284.00	S 47°30'00"	8.84	187.9000'	8.44	287°00'00"	0.40
1.4 + 295.00	S 47°30'00"	8.84	187.9000'	8.44	287°00'00"	0.40
1.4 + 306.00	S 47°30'00"	8.84	187.9000'	8.44	287°00'00"	0.40
1.4 + 317.00	S 47°30'00"	8.84	187.9000'	8.44	287°00'00"	0.40
1.4 + 328.00	S 47°30'00"	8.84	187.9000'	8.44	287°00'00"	0.40
1.4 + 339.00	S 47°30'00"	8.84	187.9000'	8.44	287°00'00"	0.40
1.4 + 350.00	S 47°30'00"	8.84	187.9000'	8.44	287°00'00"	0.40

BENT CREEK

Lots 149 thru 349, inclusive and Outlot 'A'
 Being a platting of part of Section 15, T15N,
 R11E of the 9th PM, Douglas County, Nebraska.

STATE OF NEBRASKA 95
 COUNTY OF DOUGLAS
 The foregoing instrument was acknowledged before me this 26th day of October, 1987, by JOHN H. MEADER, President of Meaderville Limited Partnership, a Nebraska Limited Partnership, on behalf of the Meaderville Bank Omaha, N.A., a National Banking Association, on behalf of the Meaderville Bank Omaha, N.A.

ACKNOWLEDGMENT OF NOTARY
 I, *John H. Meader*
 Notary Public
 COUNTY TREASURER'S CERTIFICATE
 This is to certify that I find no regular or special taxes, due or delinquent, against the property described in the foregoing certificate and assessed in this plat, as shown by the records of this office this 27th day of November, 1987.
J. P. Peterson
 COUNTY CLERK
 JUN 27 1987

APPROVAL OF CITY ENGINEER
 I hereby approve the plat of Bent Creek on this 27th day of November, 1987.
Roy A. Peterson
 CITY ENGINEER
 I hereby certify that adequate provisions have been made for compliance with Chapter 30 of the Omaha Municipal Code.
Roy A. Peterson
 CITY ENGINEER

APPROVAL OF CITY PLANNING BOARD
 This plat of Bent Creek was approved by the City Planning Board of the City of Omaha this 17th day of November, 1987.
Michael D. Deery
 CHAIRMAN
 APPROVAL OF OMAHA CITY COUNCIL
 This plat of Bent Creek was approved and accepted by the City Council of Omaha this 17th day of November, 1987.
Walter M. Colquhoun
 MAYOR
Margaret J. Peterson
 ALDERMAN

REGISTERED LAND SURVEYOR
 This plat of Bent Creek was reviewed by the Douglas County Surveyor's office this 27th day of November, 1987.
James J. Meader
 DOUGLAS COUNTY SURVEYOR
 STATE OF NEBRASKA 95
 COUNTY OF DOUGLAS
 I, *James J. Meader*
 Registered Land Surveyor, L.S. 308

ACKNOWLEDGMENT OF NOTARY
 STATE OF NEBRASKA 95
 COUNTY OF DOUGLAS
 The foregoing instrument was acknowledged before me this 26th day of October, 1987, by JOHN H. MEADER, President of Meaderville Limited Partnership, a Nebraska Limited Partnership, on behalf of the partnership.
John H. Meader
 Notary Public
 COUNTY TREASURER'S CERTIFICATE
 This is to certify that I find no regular or special taxes, due or delinquent, against the property described in the foregoing certificate and assessed in this plat, as shown by the records of this office this 27th day of November, 1987.
J. P. Peterson
 COUNTY CLERK
 JUN 27 1987

1825 740
 BENT CREEK
 1987

THOMPSON DRESSER & DORNER
 Consulting Engineers & Land Surveyors
 901-102