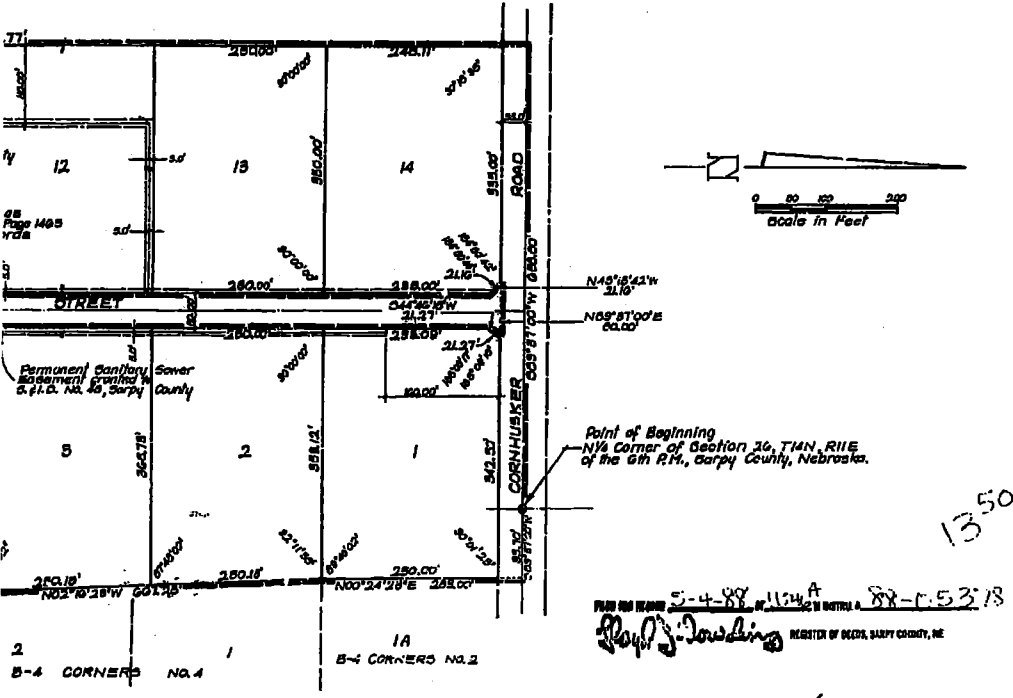


RS NO. 5

and all of the Lot 7 in the North 1/2 of
Nebraska.



PLAT FOR RECORD 5-4-88 IN 1124 A 88-05318
Roy D. Dowling REGISTER OF DEEDS, SARGE COUNTY, NE

B-4 CORNERS NO. 5	
Scale as shown	DATE APR 15, 1987
PROJECT BY J.P.	CREATED BY
Final Plat	
THOMPSON, DREESSEN & DORNER Consulting Engineers & Land Surveyors	
FP	
549-1136	

ACKNOWLEDGMENT OF NOTARY

STATE OF NEBRASKA)
COUNTY OF

The foregoing instrument was acknowledged before me this 15 day of May, 1987, by *Myrtle I. White* and *Raymond J. White*, both of whom are a Nebraska Corporation, on behalf of said Corporation.



NOTARY PUBLIC
MYRTLE I. WHITE
 My Comm. Exp. June 23, 1987

I hereby certify that the records of my office show no taxes due or delinquent upon the land described in the foregoing certificate as appears on this plat as of this 15 day of May, 1987.

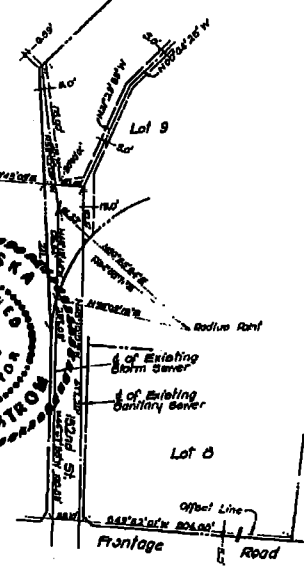


APPROVAL OF SARGE COUNTY SURVEYOR
 This plat of B-4 Corners No. 5 was approved by the Sarge County Surveyor this 10 day of May, 1987.
Raymond J. White
 SARGE COUNTY SURVEYOR

APPROVAL OF SARGE COUNTY BUILDING INSPECTOR
 This plat of B-4 Corners No. 5 was approved by the Sarge County Building Inspector this 12 day of May, 1987.
Morris J. Schmitt
 SARGE COUNTY BUILDING INSPECTOR

APPROVAL OF SARGE COUNTY PLANNING COMMISSION
 This plat of B-4 Corners No. 5 was approved by the Sarge County Planning Commission this 20 day of May, 1987.
Raymond J. White
 CHAIRMAN, SARGE COUNTY PLANNING COMMISSION

APPROVAL OF SARGE COUNTY BOARD OF COMMISSIONERS
 This plat of B-4 Corners No. 5 was approved by the Sarge County Board of Commissioners this 22 day of May, 1987.
Mary E. Cowger
 ATTEST



EASEMENT DETAIL
No Scale