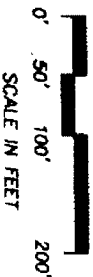
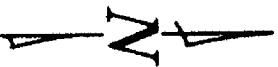




1986 347 DEED

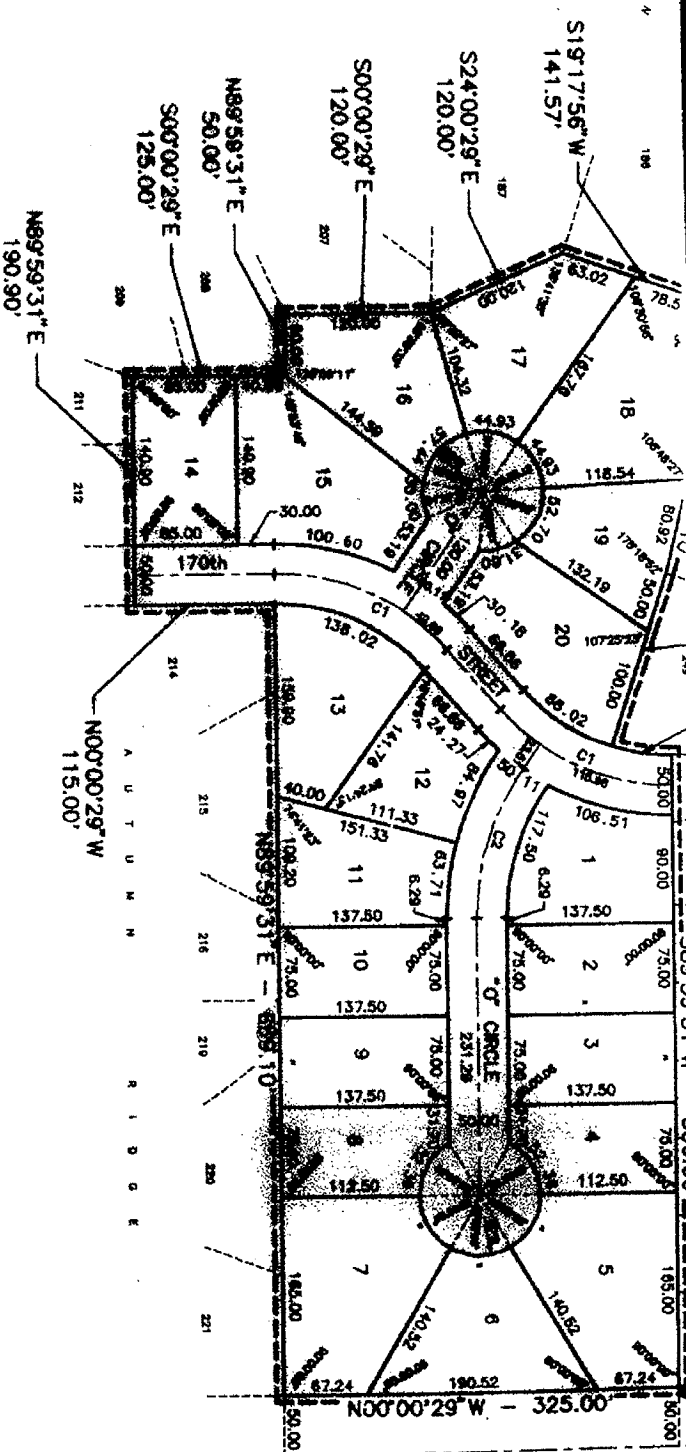


11485 94 347-350

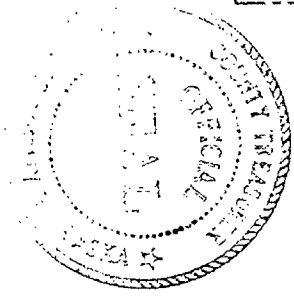


CENTERLINE CURVE DATA

CURVE	DELTA	RADIUS	ARC	TANGENT
C1	49°07'35"	188.87'	158.46'	88.00'
C2	38°43'48"	213.42'	133.08'	68.79'



11485
 30000
 11-21550
 1337



STATE OF MISSOURI
 COUNTY OF []
 THE 1st HOUR
 THIS SURVEY 1994
 DEPUTY
 I HEREBY
 DATE

RECEIVED

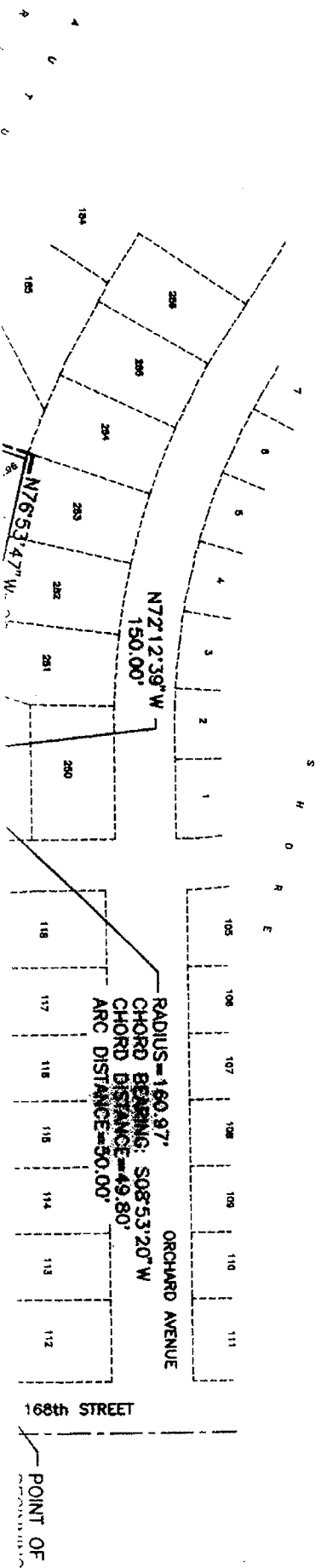
SEP 2 11:20 AM '94
SEP 2 11:20 AM '94

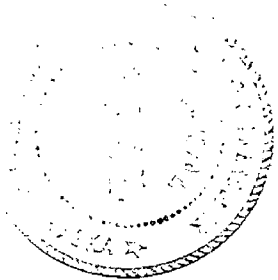
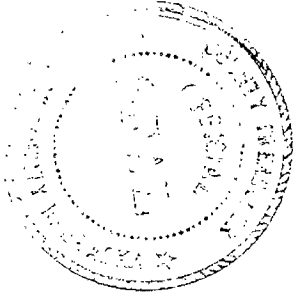
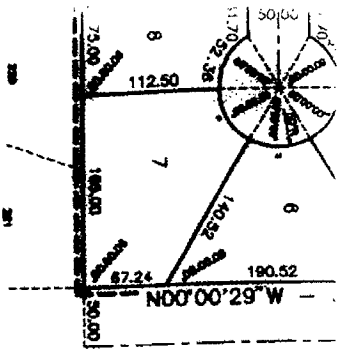
GEORGE J. SUTHERLAND
REGISTERED SURVEYOR
DOUGLAS COUNTY, NE

AUTUMN WOODS

LOTS 1 THRU 20, INCLUSIVE

BEING A REPLAT OF LOTS 229 THRU 248, INCLUSIVE, LAKE SHORE,
A SUBDIVISION AS SURVEYED, PLATTED AND RECORDED IN DOUGLAS COUNTY, NEBRASKA





STATE OF NEBRASKA)
 COUNTY OF Douglas) SS

THE FOREGOING DEDICATION WAS ACKNOWLEDGED BEFORE ME THIS 29 DAY OF November 1993 BY THE PRESIDENT OF PROJECTER HOMES, INC., A NEBRASKA CORPORATION, ON BEHALF OF SAID CORPORATION.

Calvin Hawkins
 CALVIN HAWKINS
 PRESIDENT OF PROJECTER HOMES, INC.



COUNTY TREASURER'S CERTIFICATE

Louis R. Romano
 LOUIS R. ROMANO
 DOUGLAS COUNTY TREASURER

THIS IS TO CERTIFY THAT I FIND NO REGULAR OR SPECIAL TAXES, DUE OR DELINQUENT, AGAINST THE PROPERTY DESCRIBED IN THE FOREGOING CERTIFICATE AND EMBRACED IN THIS PLAN, AS SHOWN ON THE RECORDS OF THIS OFFICE, THIS 16 DAY OF November, 1993.

I HEREBY APPROVE THIS PLAN OF AUTUMN WOODS ON THIS 29 DAY OF December

David R. Williams
 DAVID R. WILLIAMS
 CITY ENGINEER

I HEREBY CERTIFY THAT ADEQUATE PROVISIONS HAVE BEEN MADE FOR COMPLIANCE WITH CHAPTER 43 OF THE OMAHA MUNICIPAL CODE.

David R. Williams
 DAVID R. WILLIAMS
 CITY ENGINEER

THIS PLAN OF AUTUMN WOODS WAS APPROVED BY THE CITY PLANNING BOARD

Patricia J. Pfeiffer
 PATRICIA J. PFEIFFER
 CHAIRMAN

John A. M. ...
 JOHN A. M. ...
 PRESIDENT

John A. M. ...
 JOHN A. M. ...
 PRESIDENT

THIS PLAN OF AUTUMN WOODS WAS REVIEWED BY THE DOUGLAS COUNTY ENGINEER'S OFFICE

William ...
 WILLIAM ...
 COUNTY ENGINEER



2 THOMPSON, DRESSION & DORNER, INC.
 Consulting Engineers & Land Surveyors
 10636 OLD MILL ROAD
 OMAHA, NE 68154
 (402) 330 - 8800

245-140
 A245140.DWG