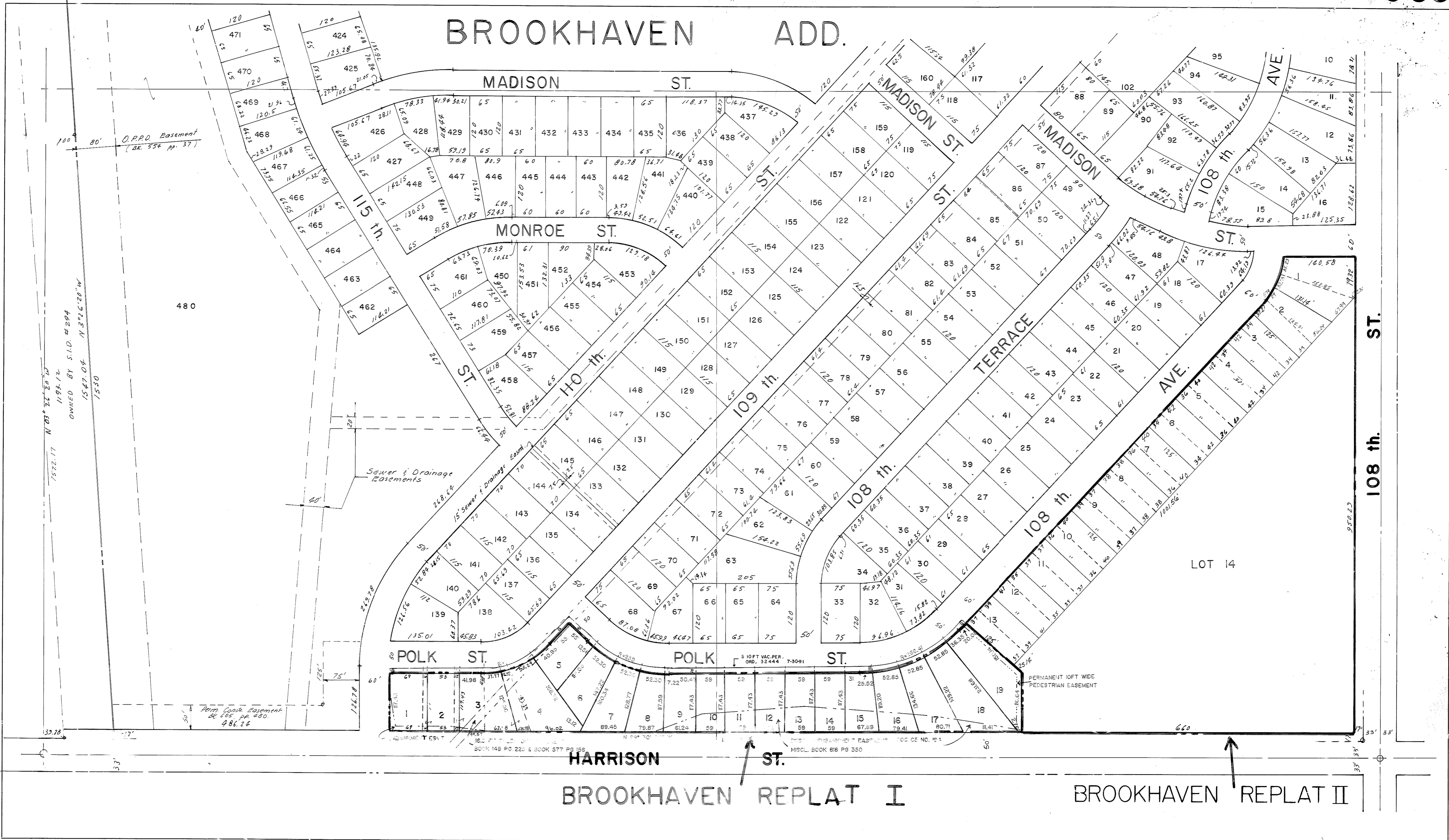


BROOKHAVEN ADD.

956

844



HARRISON ST.
BROOKHAVEN REPLAT I

BROOKHAVEN REPLAT II

SARPY COUNTY

S. 1/2 SE 1/4 SEC. 8-14-12

D.P.R.D. Easement
82, 854 pp. 37

1522.17 N 83° 32' 20" W
1193.12 OWNED BY S.I.D. #294
1547.04 N 30° 12' 20" W
1530

480

Sewer & Drainage Easements

Perm. Coach Easement
86, 805 pp. 480
486.24

POLK ST.

POLK ST.

POLK ST.

PERMANENT 10FT WIDE PEDESTRIAN EASEMENT

BOOK 149 PG. 225 & BOOK 577 PG. 156
MISCL. BOOK 616 PG. 350