

807

809

807

SOMERSET

1-680
R.O.W.
702.16'

UNPLATTED

WENNINGHOFF
R.O.W.
744.66'

RD.

LITTLE
R.O.W.
110.92'

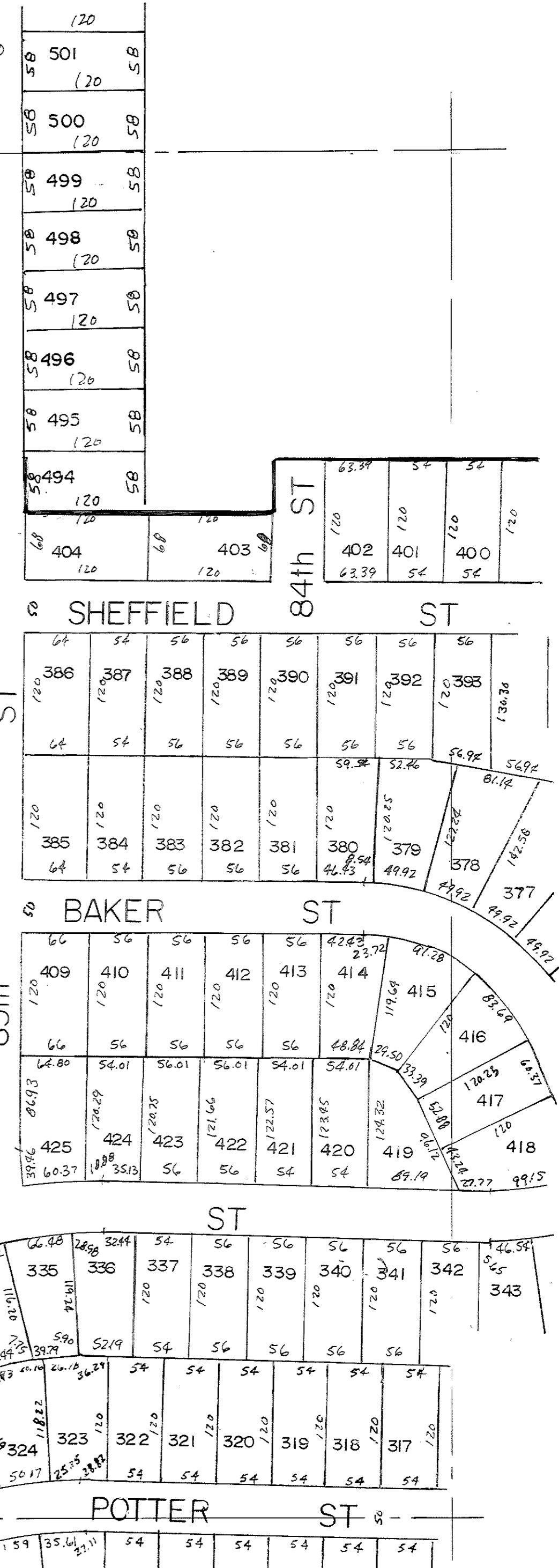
PAPILLION
R.O.W.
500.28'

CREEK

R.O.W.
1323.2'

27

(53.1 Ac. Purchased by STATE)



808

696

805

S. 1/2 NE. 1/4 SEC. 27-16-12