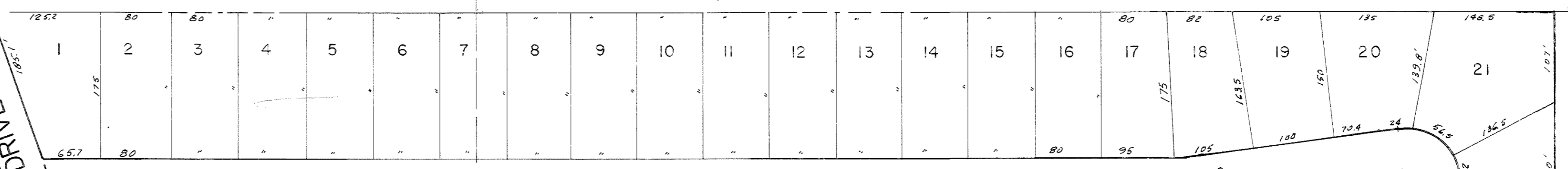
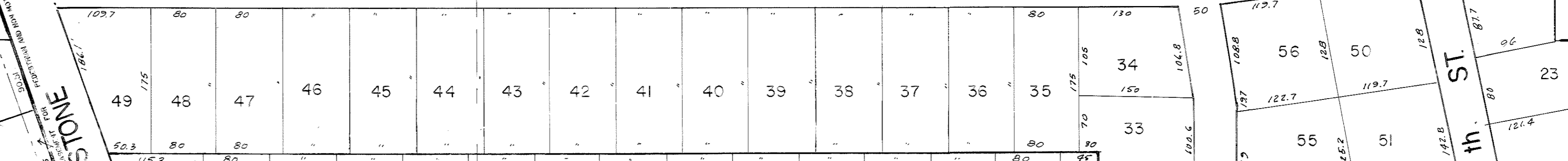


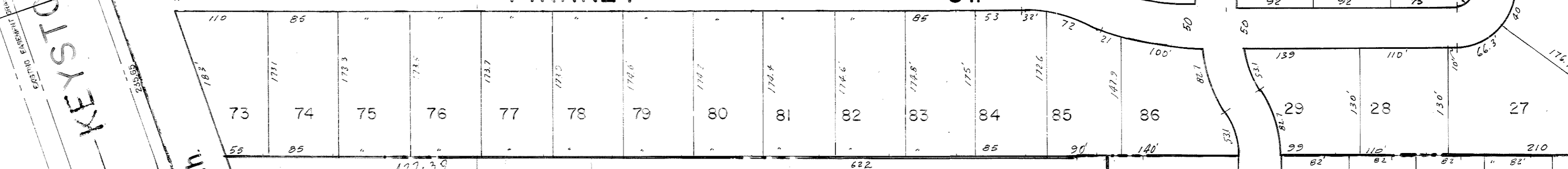
KEYSTONE TERRACE



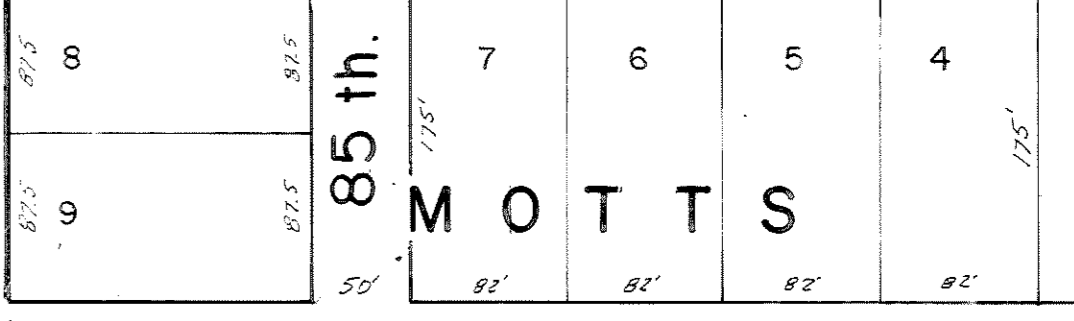
EVANS ST.



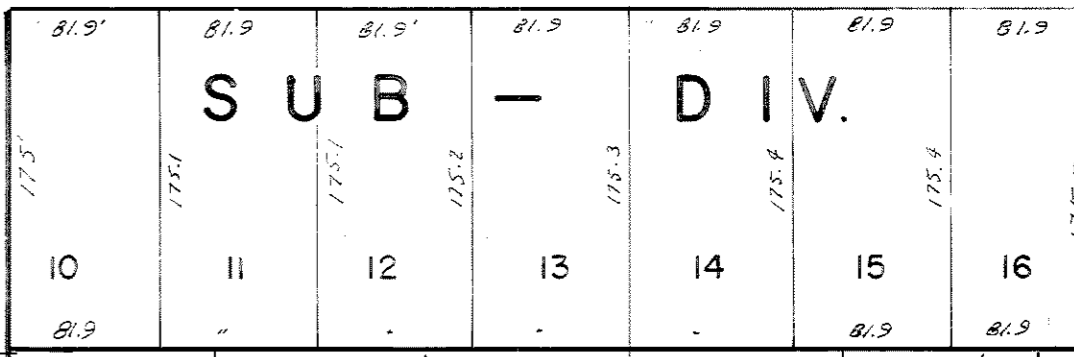
PINKNEY ST.



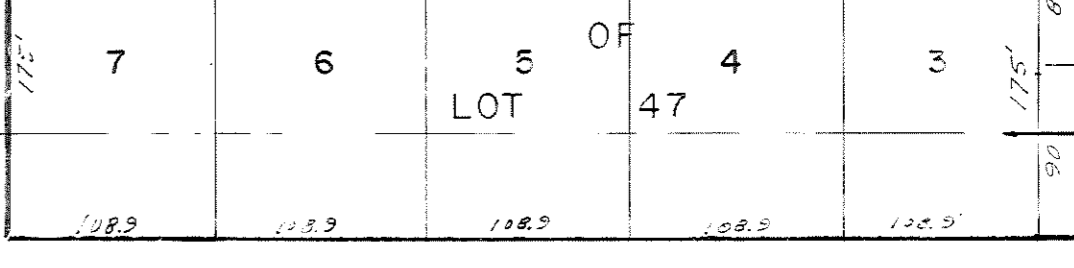
MOTT'S



EMMET ST.



KEYSTONE PARK REPLAT.



BEDFORD AVE

KEYSTONE PARK

NOTE: OLD CREEK CENTER LINE WAS THE WEST LINE OF LOT 87 KEYSTONE PARK

1.51 AC

PT. LT. 87

3.90 AC

.97 AC

PT. LT. 88

KEYSTONE PARK REP. II LOT I

L. 88

WARNER'S ADD. LOT I

1.85 AC

344.65

PT LOT 88

1.02 AC

.76 AC

BEDFORD CIR.

PT. LT. 88

PART T.L. 2

1.36

158.32

173.25

PAPILLION DITCH

LITTLE DRAINAGE

INDUSTRIAL PARK DRIVE

KEYSTONE INDUSTRIAL PARK DRIVE

KEYSTONE INDUSTRIAL PARK DRIVE

87 in

90TH ST.

BROOK PARK