

640

638

WESTGATE

84 th. ST.

749

84 th. ST.

GROVER ST.

ST.

ONTARIO ST.

ST.

PASADENA AVE.

AVE.

NINA ST.

ST.

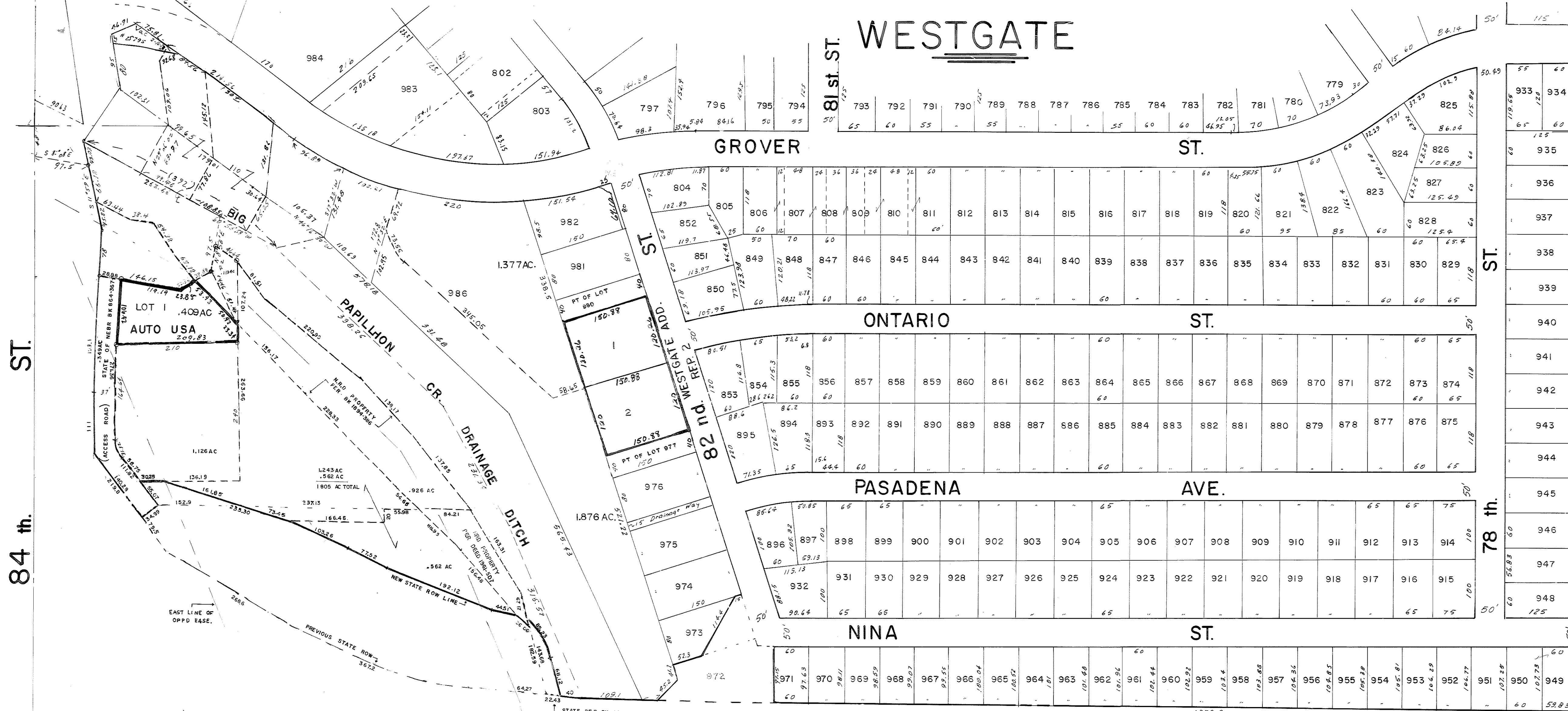
INTERSTATE HWY. # 80

HWY. # 80

ACCESS ROAD

636

N 1/2 SW 1/4 SEC. 35-15-12



56

35

78 th.

50'

335.1