

634

632

CORNHUSKER INDUSTRIAL

PARK

CORNHUSKER IND. PARK REP.  
PT. LOT 1 BLK 1

CORNHUSKER IND PARK REP 6  
LOT 2  
3.94 AC

CORNHUSKER IND. PARK REPLAT  
PT. LOT 3 BLK 1

ST

ST.

84TH

79TH

H & H ADDITION

KRANTZ SUB

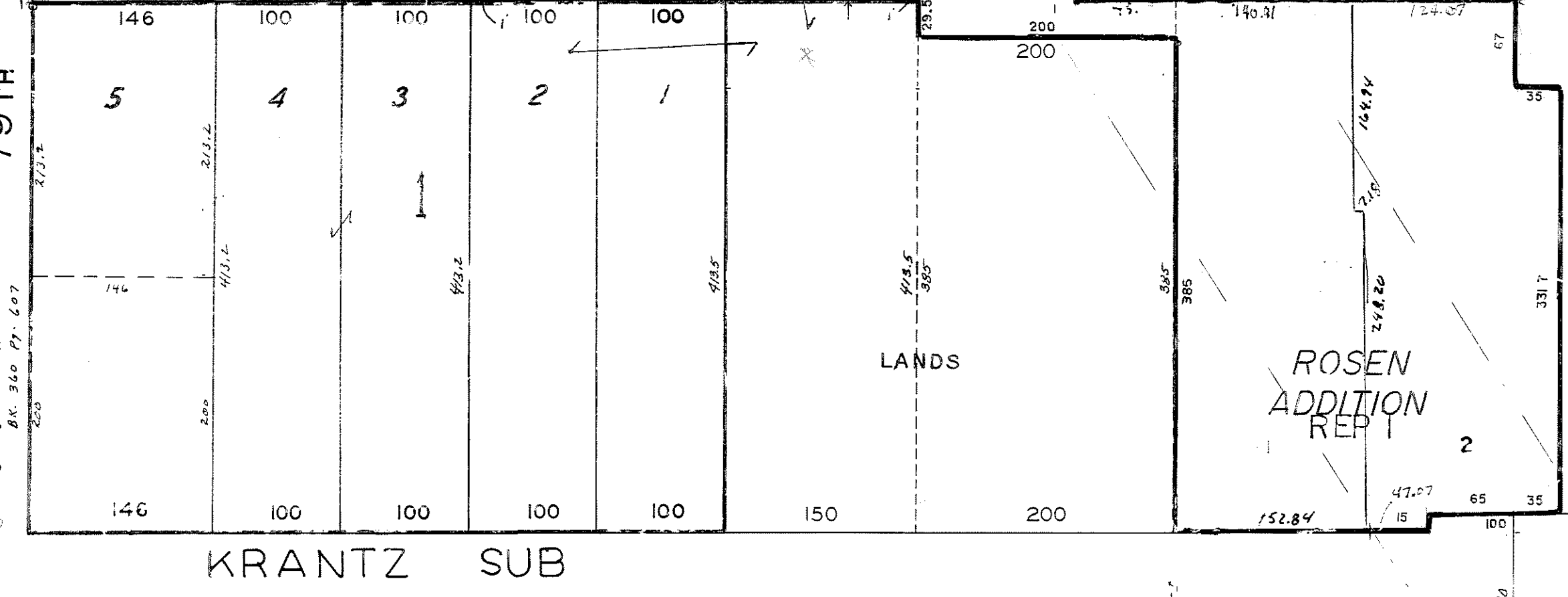
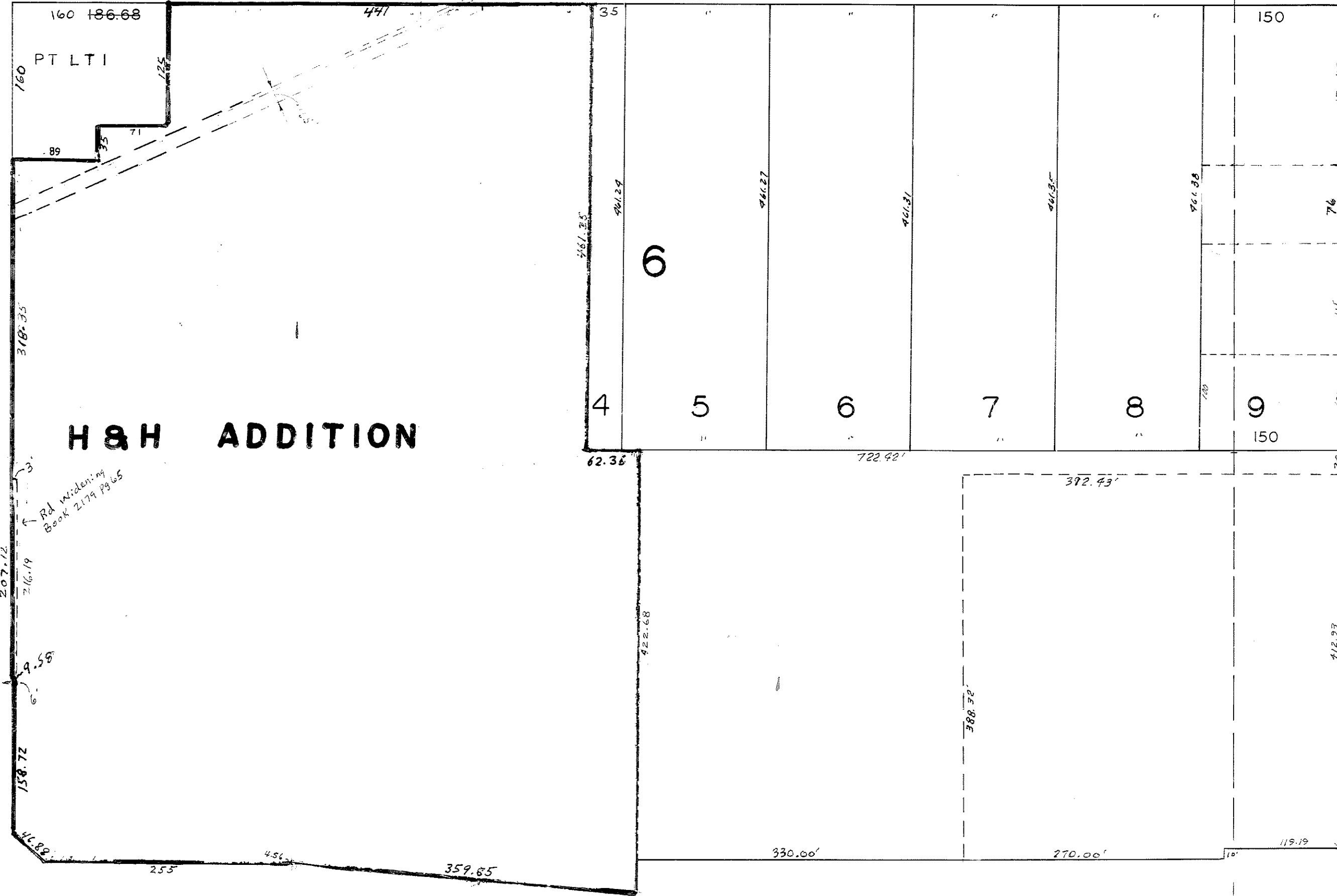
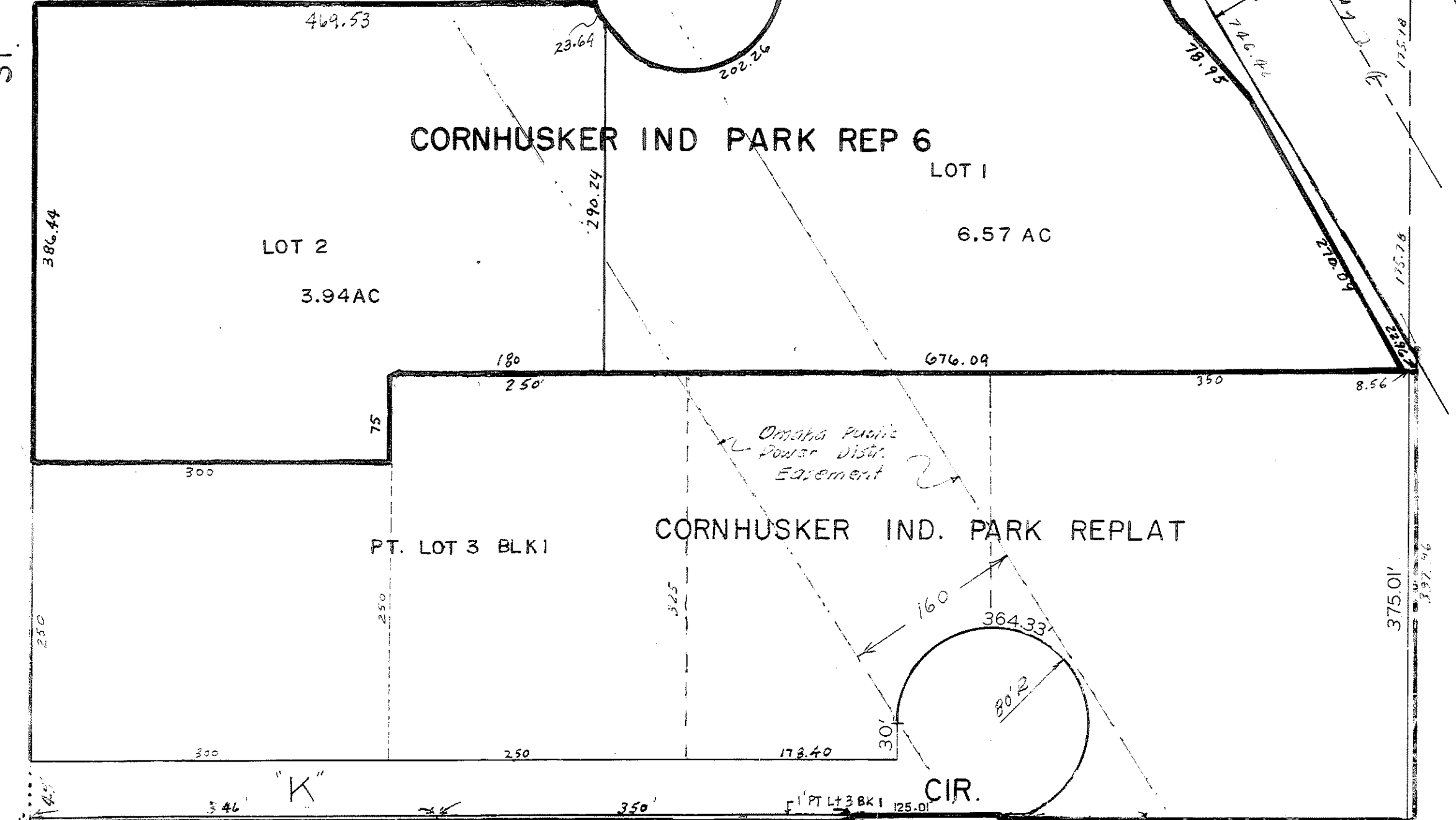
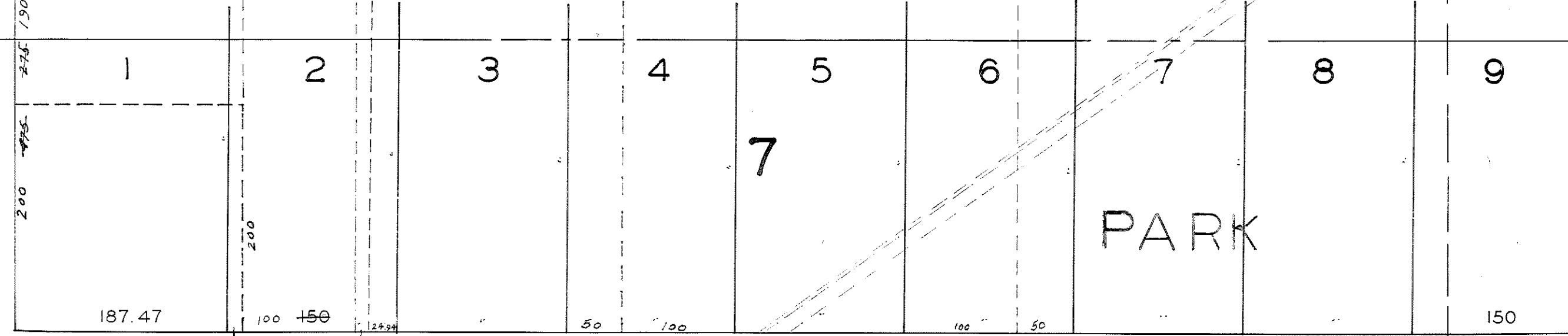
LANDS

ROSEN  
ADDITION  
REP 1

ST

630

S 1/2 NW 1/4 2-14-12



743

631