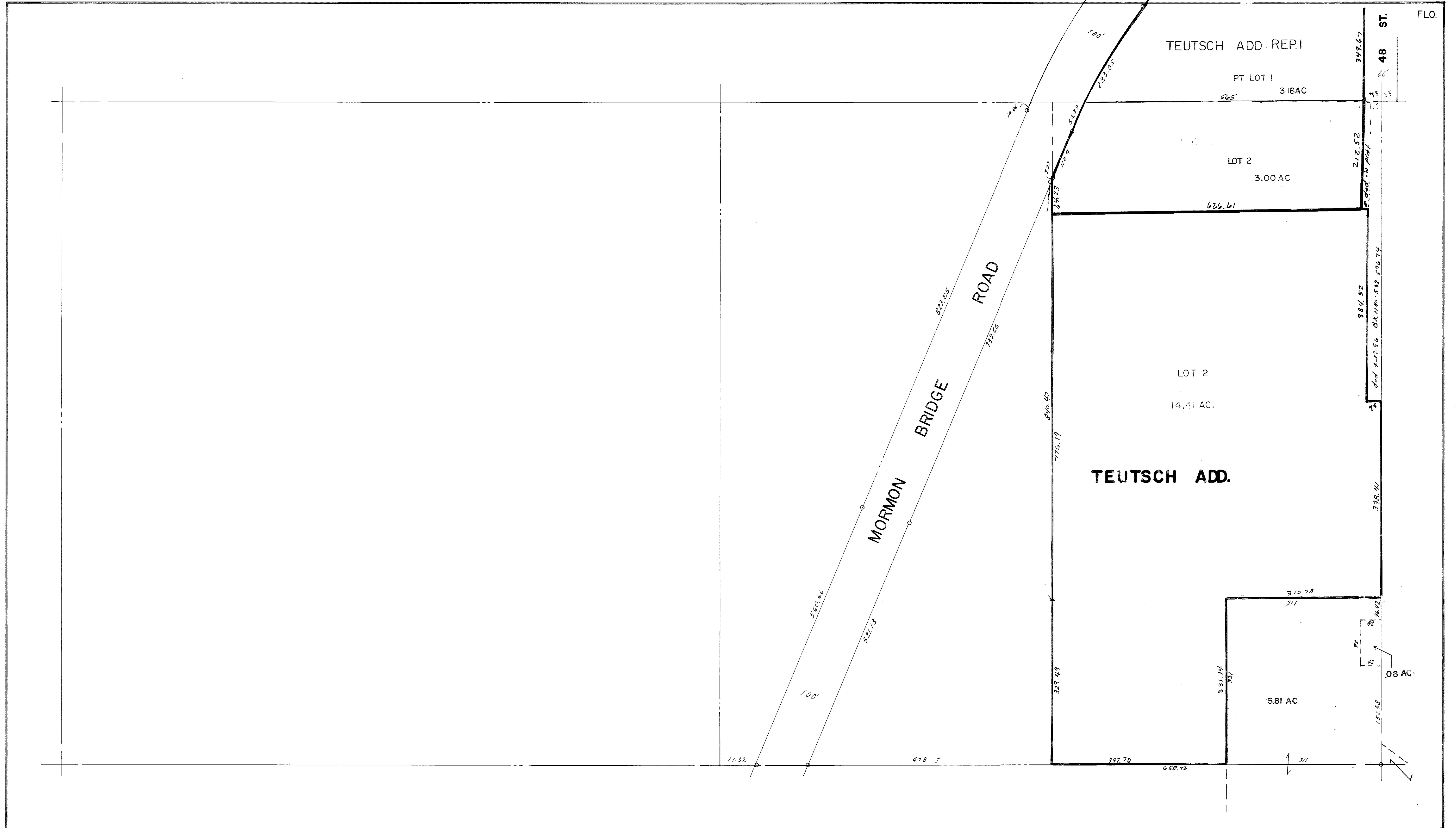


477

475

476

364



FLO.

ST. 48

TEUTSCH ADD. REP. I

PT LOT 1  
3.18 AC

LOT 2  
3.00 AC

LOT 2  
14.41 AC.

TEUTSCH ADD.

5.81 AC

0.8 AC

473

S 1/2 SE 1/4 SEC. 19-16-13