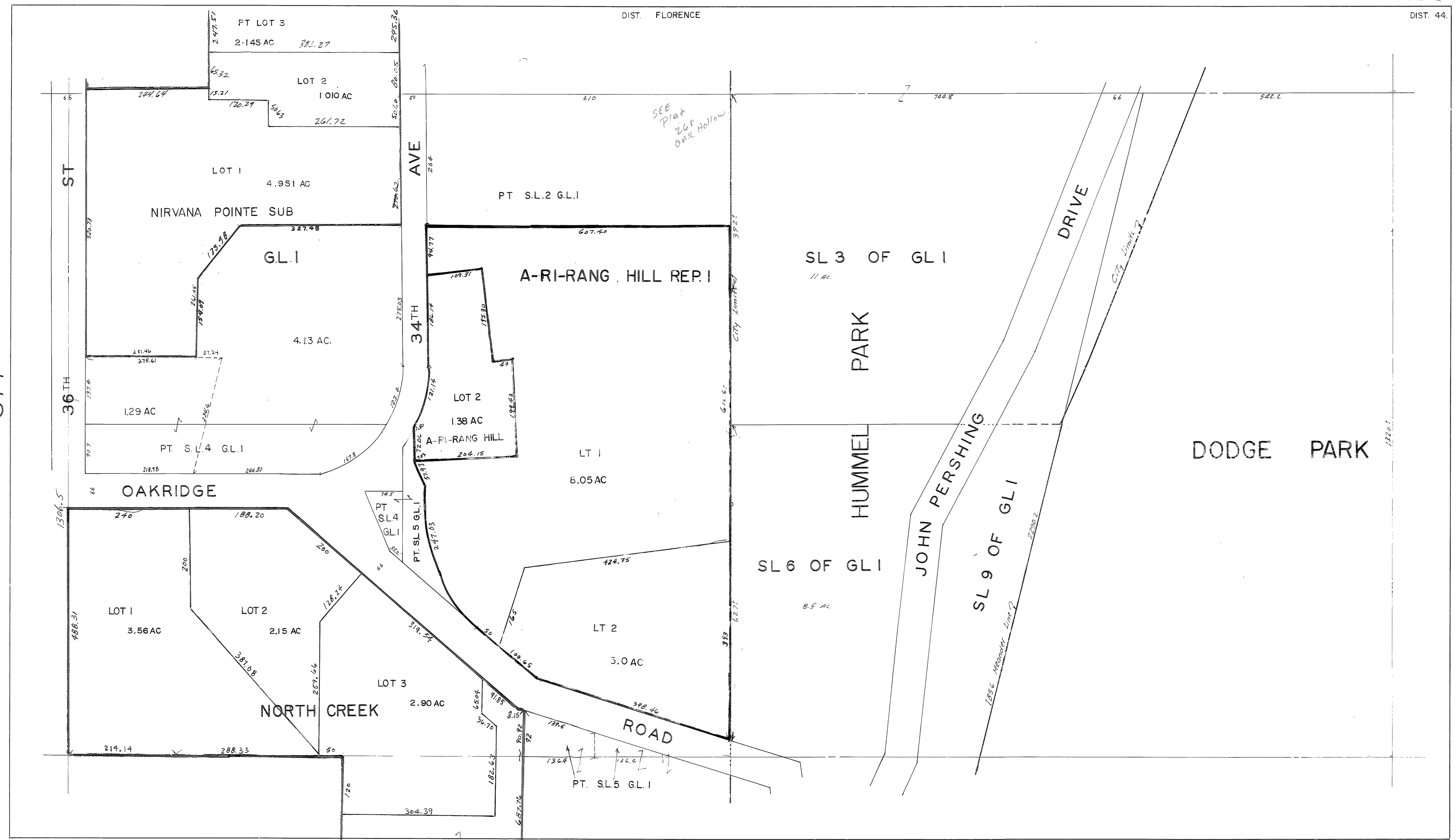


377



ST

36TH

AVE

34TH

PARK

HUMMEL

JOHN PERSHING

DRIVE

ROAD

NIRVANA POINTE SUB

A-RI-RANG HILL REP. I

OAKRIDGE

NORTH CREEK

DODGE PARK

PT LOT 3

2.145 AC 382.27

LOT 2

1.010 AC

261.72

LOT 1

4.951 AC

PT. S.L.2 G.L.1

SL 3 OF GL 1

11 AC.

LOT 2

1.38 AC

A-RI-RANG HILL

LT 1

8.05 AC

1.29 AC

PT. S.L.4 G.L.1

OAKRIDGE

LOT 1

3.56 AC

LOT 2

2.15 AC

LOT 3

2.90 AC

LT 2

3.0 AC

SL 6 OF GL 1

8.5 AC.

SL 9 OF GL 1

LOT 1

3.56 AC

LOT 2

2.15 AC

LOT 3

2.90 AC

LT 2

3.0 AC

SL 6 OF GL 1

8.5 AC.

SL 9 OF GL 1

LOT 1

3.56 AC

LOT 2

2.15 AC

LOT 3

2.90 AC

LT 2

3.0 AC

SL 6 OF GL 1

8.5 AC.

SL 9 OF GL 1

PT. LOT 4

PT. S.L.5 G.L.1

SEE PLAT 268 OF Oak Hollow

265