

VALLEY FARMS 1st ADD.

BLK. 11

TRACT "A" 6.71 AC

FRONTAGE RD.

U.P.R.R.

HWY. # 275

T.L. 4

T.L. 3

DIST. 23
DIST. 33

25

288 th. ST. VAC.
CO. RD. # 104
RESOL. 7-29-75
CO. BD.

33-2

33-1

24.82 AC.

53 AC

.50 AC

6.57 ac.

T.L. 3

71.75 AC

8.85 AC

T.L. 3

T.L. 2

N 0° 02' 17" W

970

337.57

545

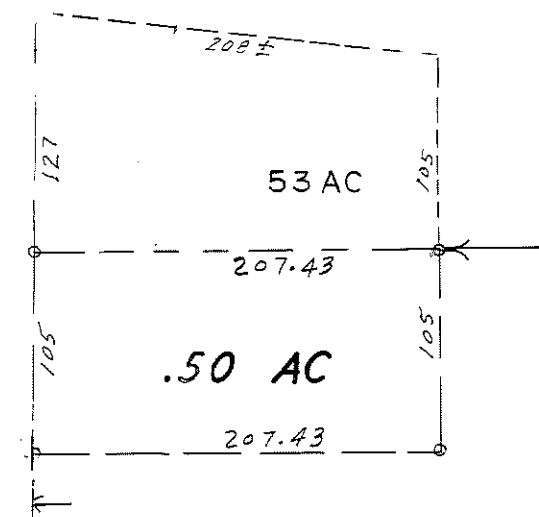
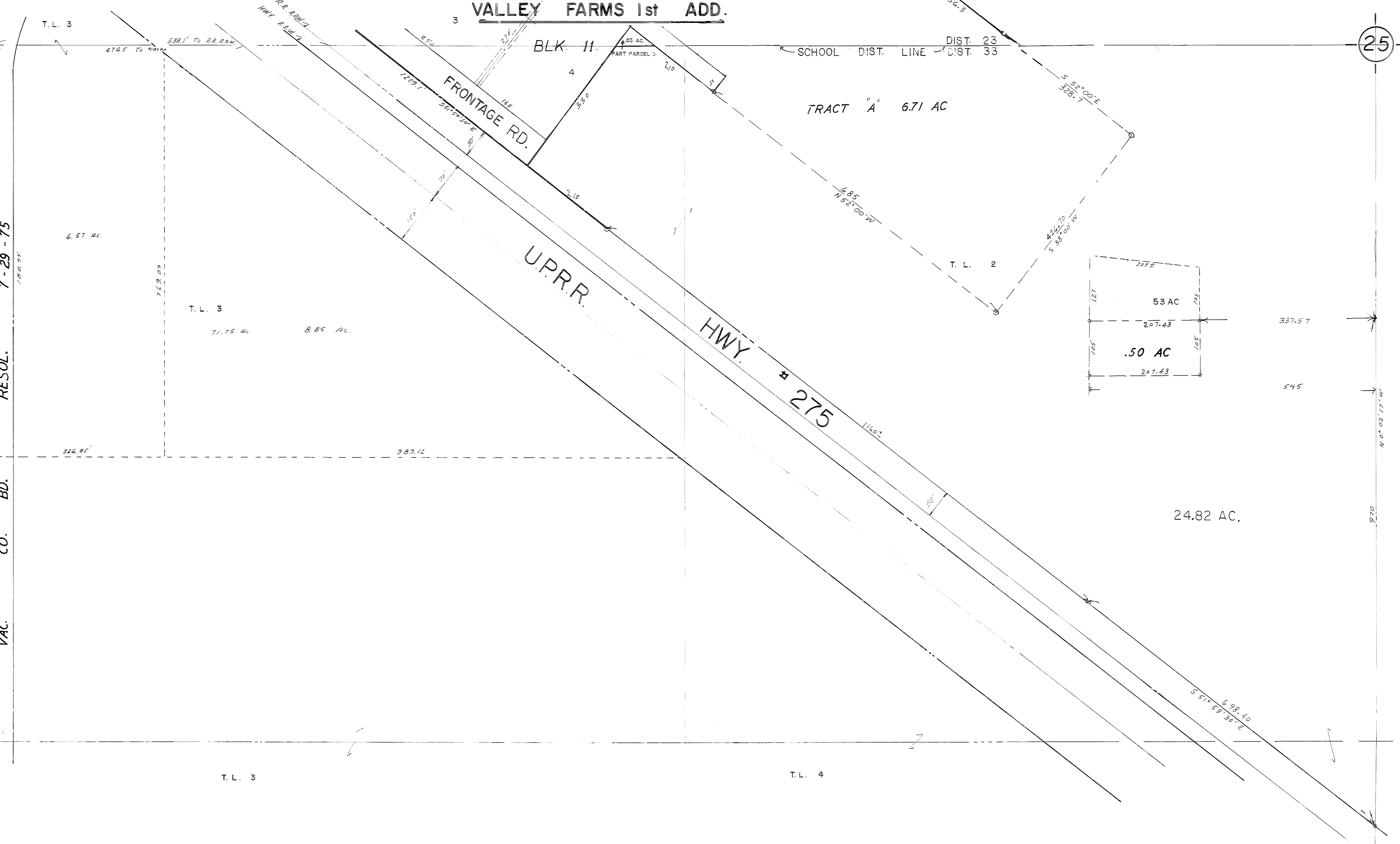
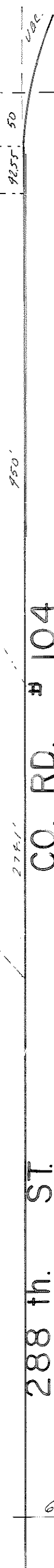
474.5 To tracks

638.1 To R.R.R.O.W.

248.00

326.95

989.12



STANDARD BLUE PRINT, OMAHA 013074