

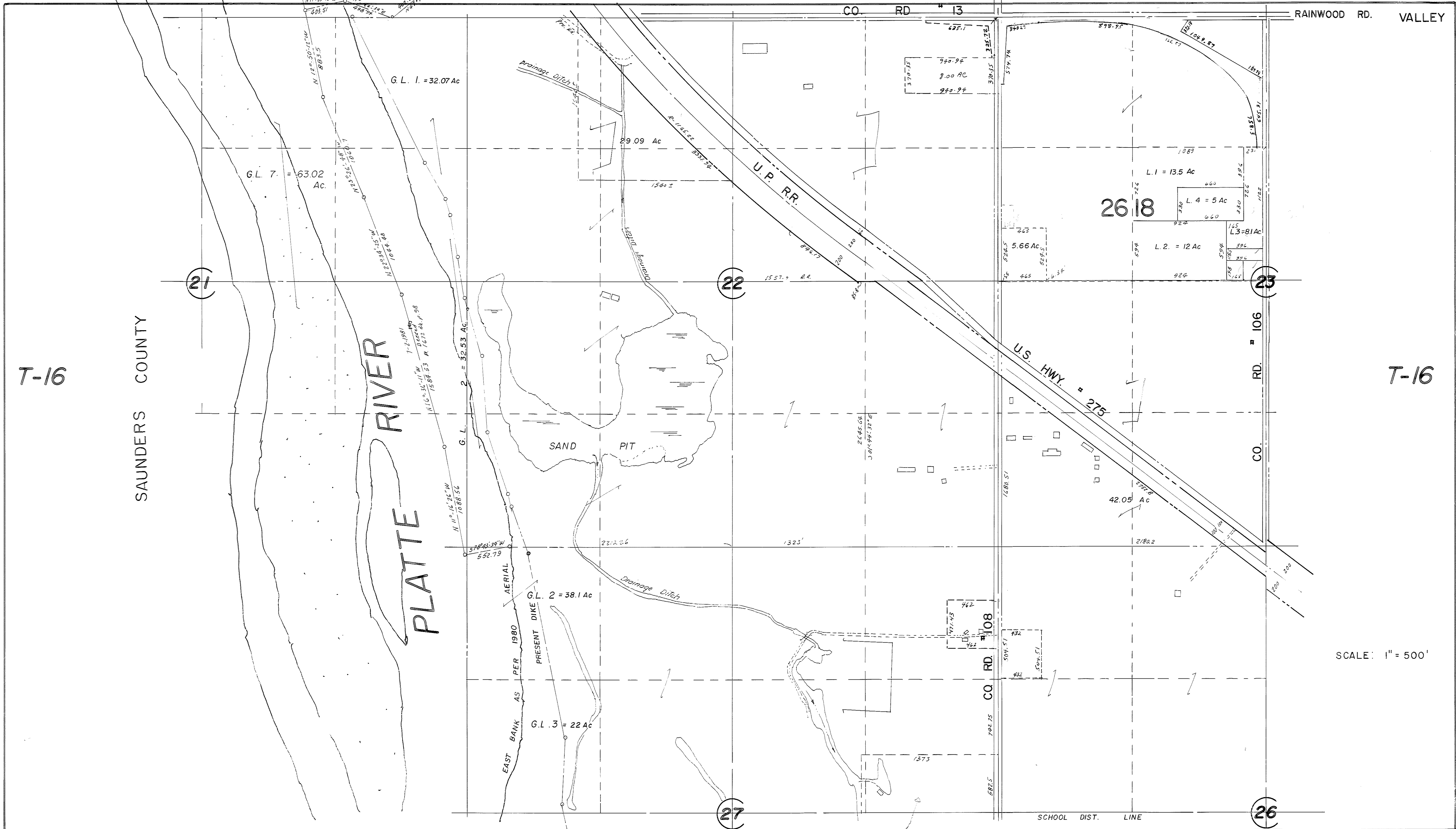
R-9

23-2

23-4

CO. RD. # 13

RAINWOOD RD. VALLEY



T-16

SAUNDERS COUNTY

PLATTE RIVER

SAND PIT

U.P. R.R.

U.S. HWY # 275

2618

T-16

23-3

SCALE: 1" = 500'

R-9

33-2

SEE PG. 33-2

SCHOOL DIST. LINE