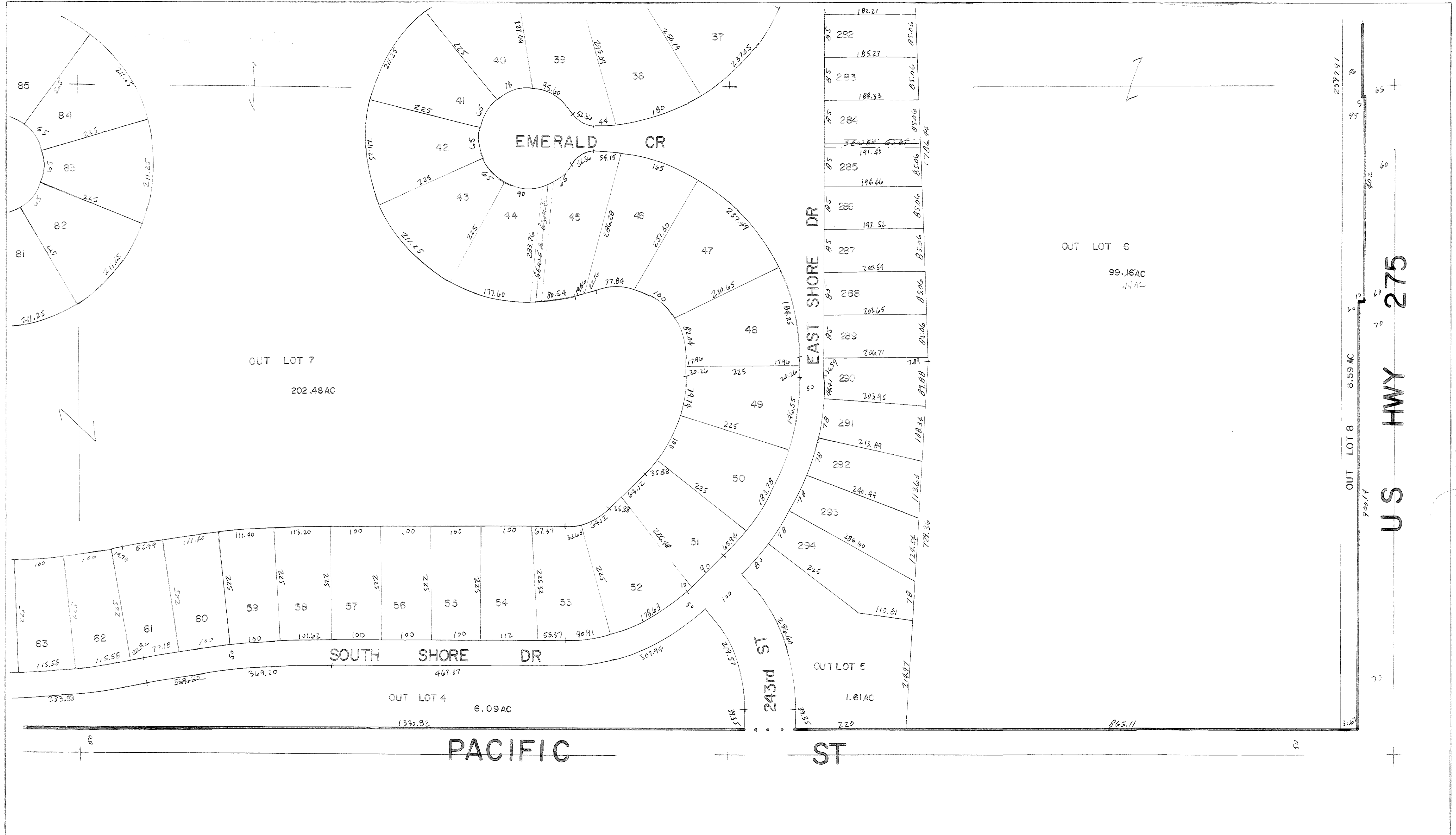


2220

2221

2219



14-1

14-A

S 1/2 SE 1/4 SEC 21-15-10

US HWY 275

OUT LOT 8 8.59 AC

OUT LOT 6 99.16 AC 1/4 AC

OUT LOT 7 202.48 AC

OUT LOT 4 6.09 AC

OUT LOT 5 1.61 AC