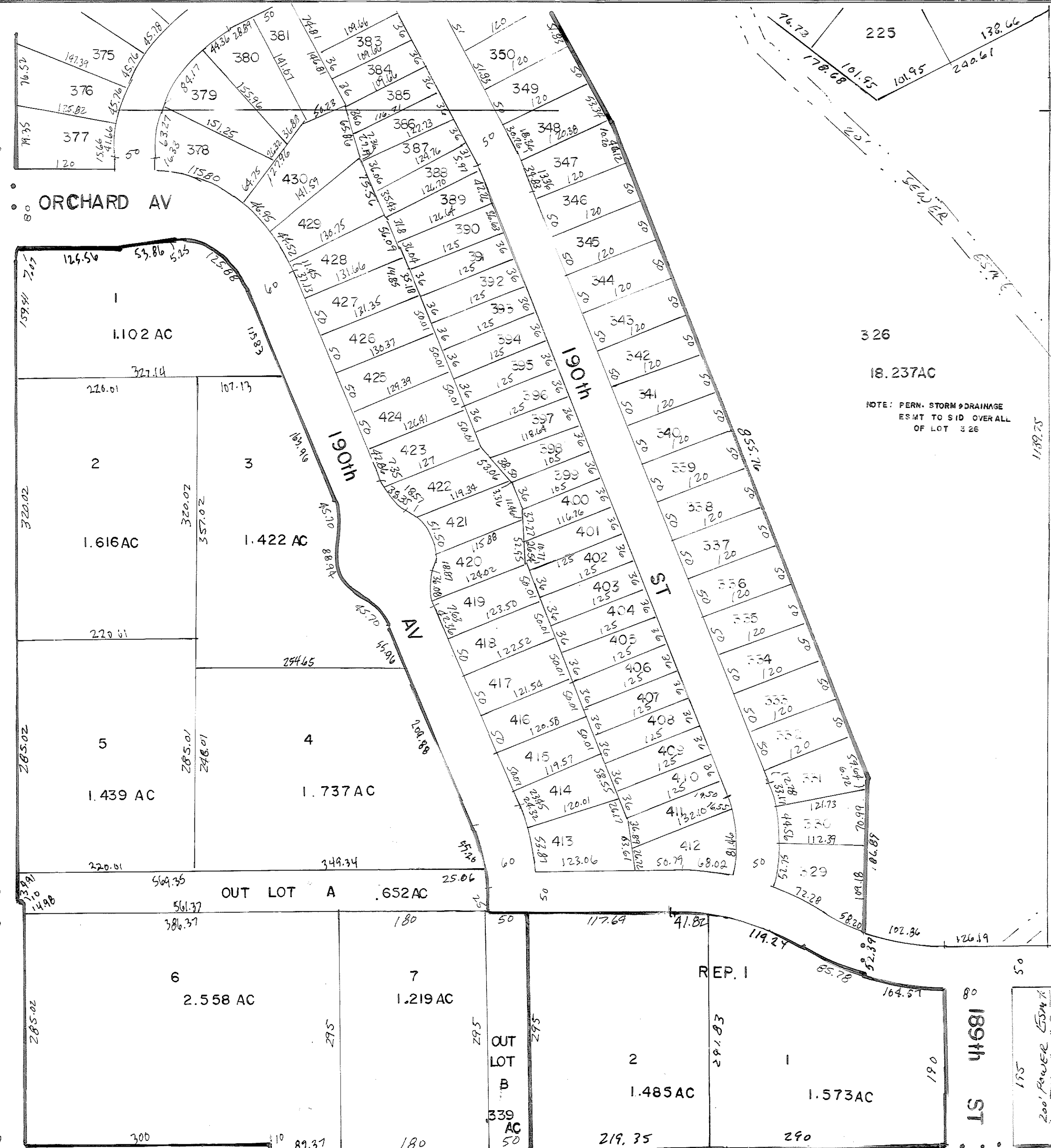


36-1

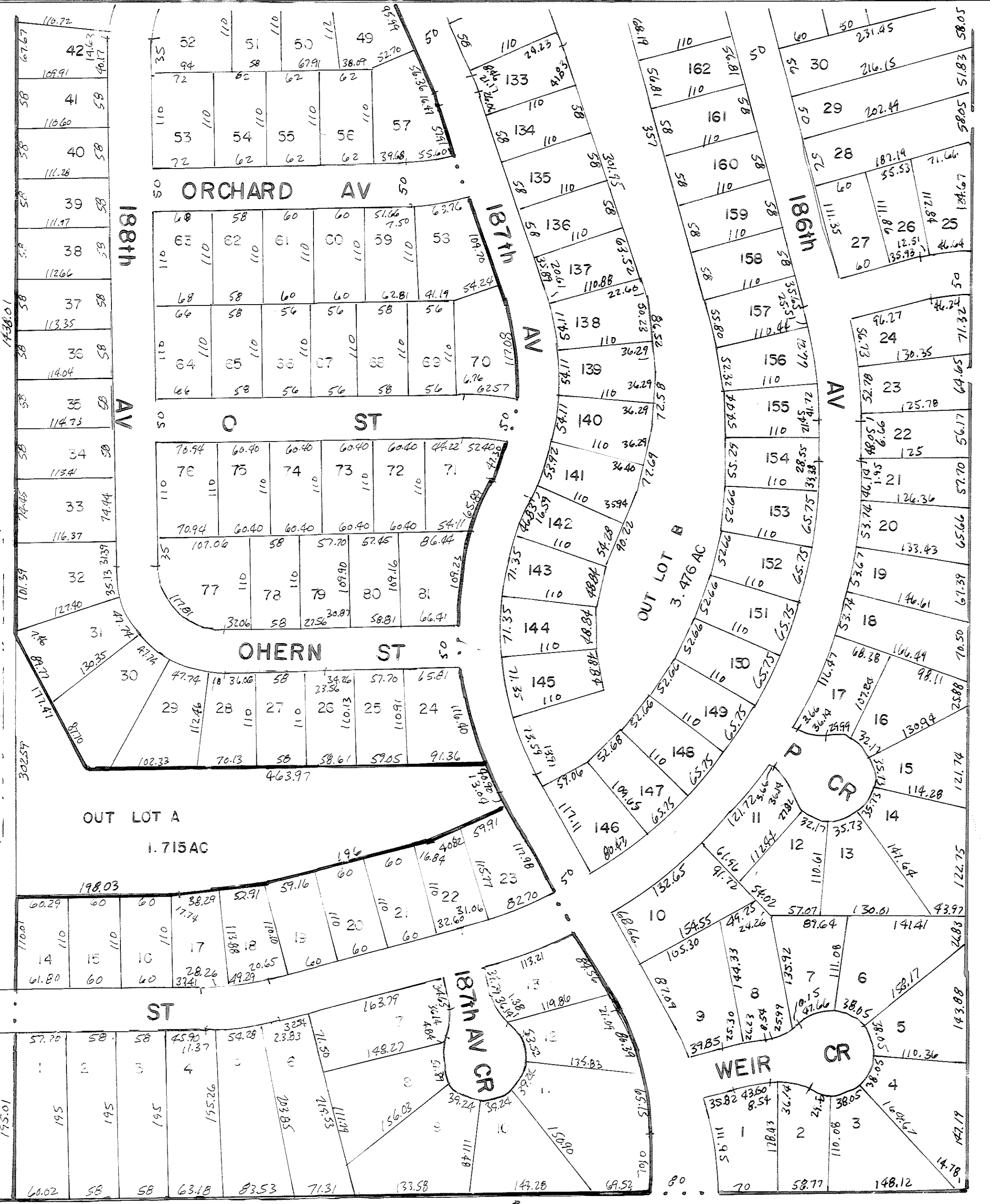
192ND ST

190th AN



326
18.237AC
NOTE: PERM. STORM DRAINAGE
ESMT TO SID OVERALL
OF LOT 326

NOTE: 200' PER. POWER
ESMT OVER ALL
OF LOTS
324-325-327-328



ST
CATTAIL CREEK
CATTAIL CREEK REP. I

CATTAIL CREEK COMMERCIAL