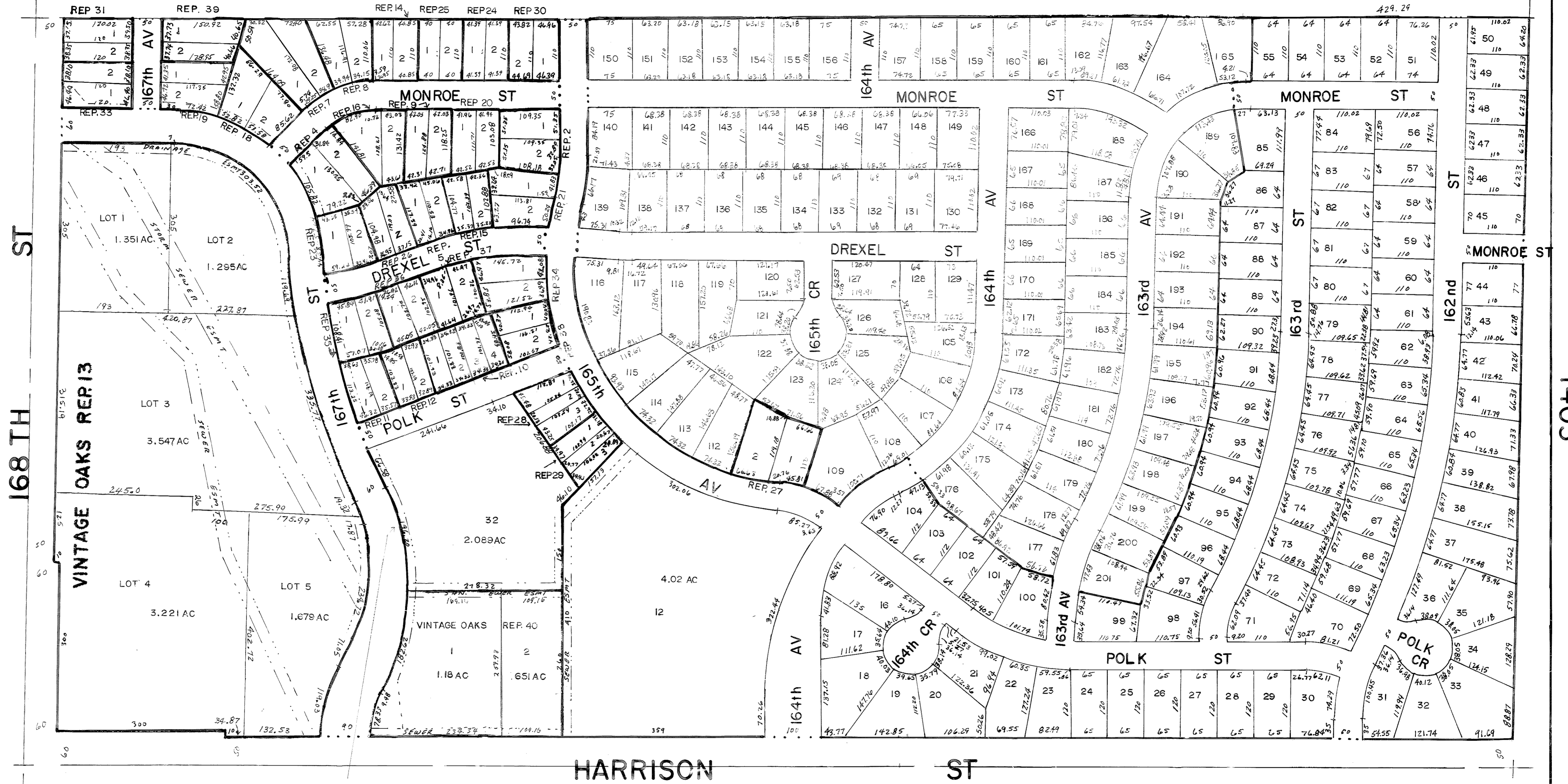


VINTAGE OAKS



1515

168 TH ST

VINTAGE OAKS REP. 13

LOT 1
1.351 AC

LOT 2
1.295 AC

LOT 3
3.547 AC

LOT 4
3.221 AC

LOT 5
1.679 AC

VINTAGE OAKS REP. 40
1.18 AC
651 AC

VINTAGE OAKS REP. 1
12

HARRISON ST

SARPY COUNTY

S 1/2 SW 1/4 SEC 10-14-11

1403