

SUMMERWOOD

F ST. 1149.12 5 84° 6' 00" W

PT. F ST RWY PER. PLATTING

DAYTON ST.

SHARP ST.

151 ST. CR.

HILLSDALE AV

156 TH ST.

154th ST

153rd CIR.

152nd CIR

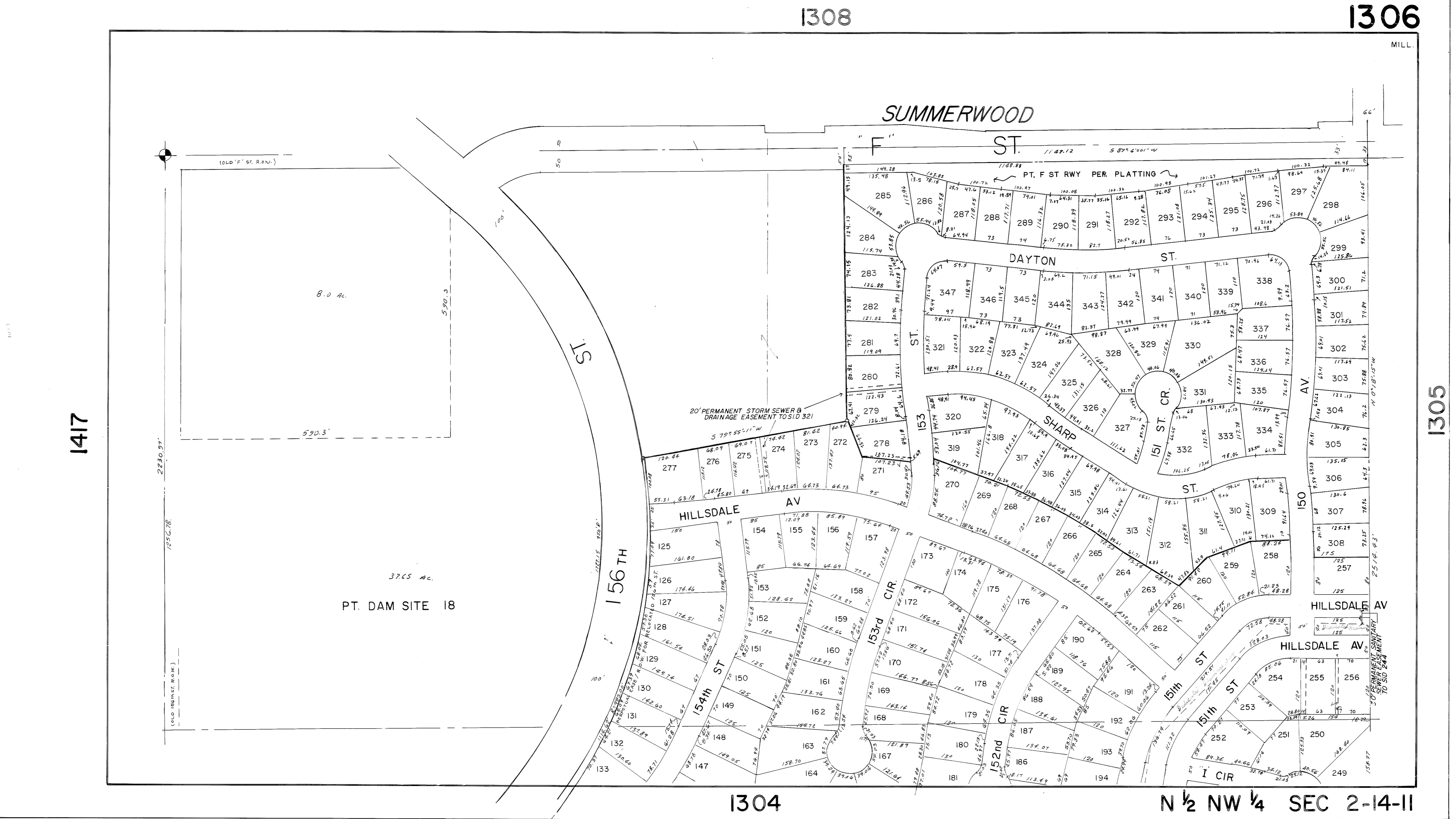
15th ST

15th ST

I CIR

HILLSDALE AV

HILLSDALE AV



1417

1305