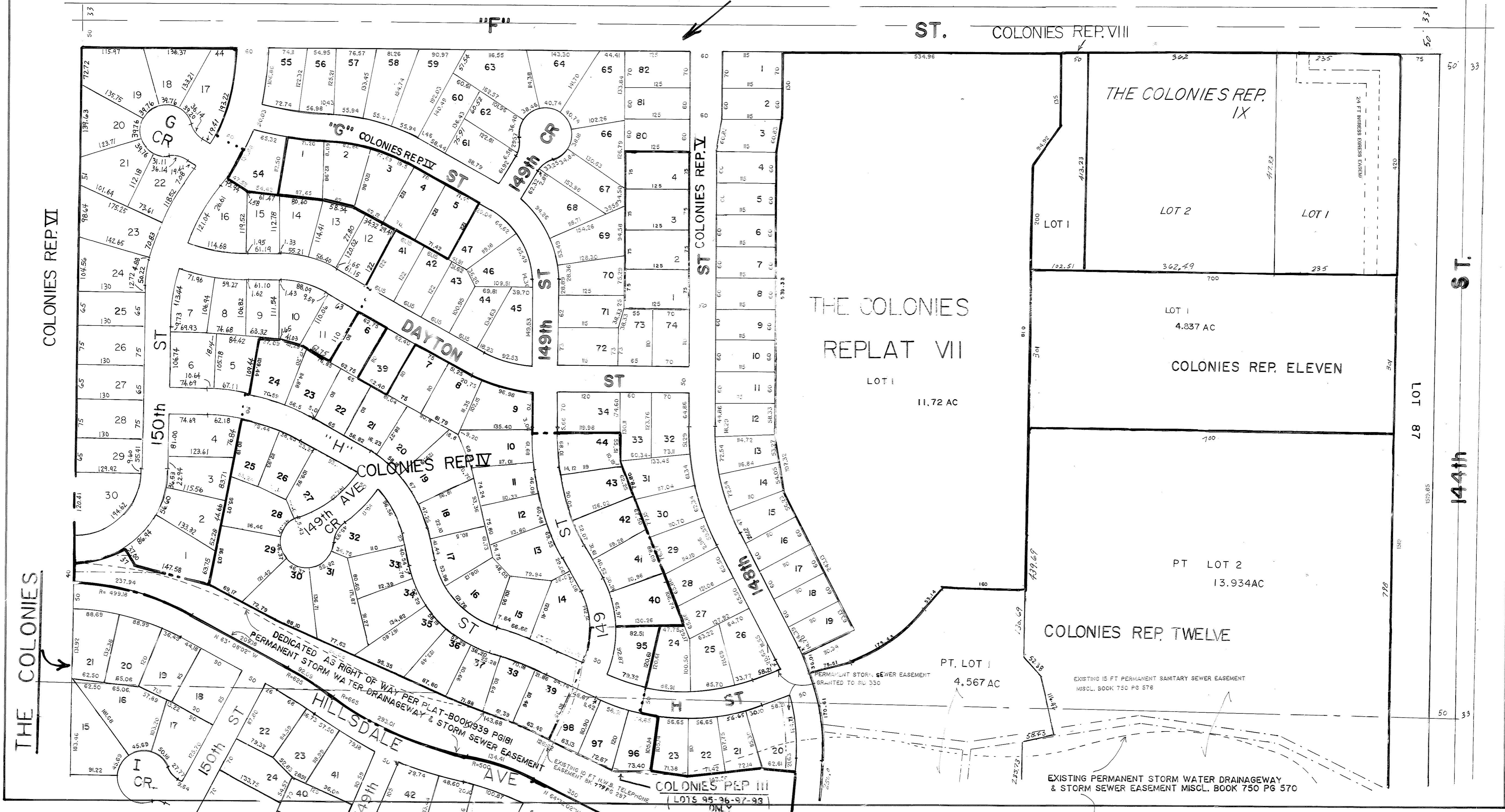


THE COLONIES REPLAT I

ST. COLONIES REP. VIII

1306

1192



N 1/2 NE 1/4 2-14-11

1303

COLONIES REP III (LOTS 95-96-97-98)

EXISTING PERMANENT STORM WATER DRAINAGEWAY & STORM SEWER EASEMENT MISCL. BOOK 750 PG 570

PT. LOT 1 4.567 AC

PT LOT 2 13.934 AC

COLONIES REP. ELEVEN

LOT 1 11.72 AC

LOT 1 4.837 AC

LOT 2

LOT 1

THE COLONIES REP. IX