

1193

1191

OMAHA INDUSTRIAL FOUND.
DIST. NO. 3 REP. 4

4.65 AC
BLOCK 4

1.894 AC
PAR. H

1.841 AC
PAR. G

2.136 AC
PAR. D-2

1.95 AC
PAR. I

1.951 AC
PAR. D-1

2.9 AC
PAR. F

BLK 3
PARC-2 PARC-1

THE MILLARD
BUSINESS CENTER
CONDO. 2.37 AC

PAR E
2.31 AC

2.292 AC
PAR. B

3.337 AC
PAR. A

3.43 AC

OMAHA IND. FOUND.
DIST. NO. 3 REP. 3

BLK. 2

1.70 AC

2.70 AC.

1.60 AC

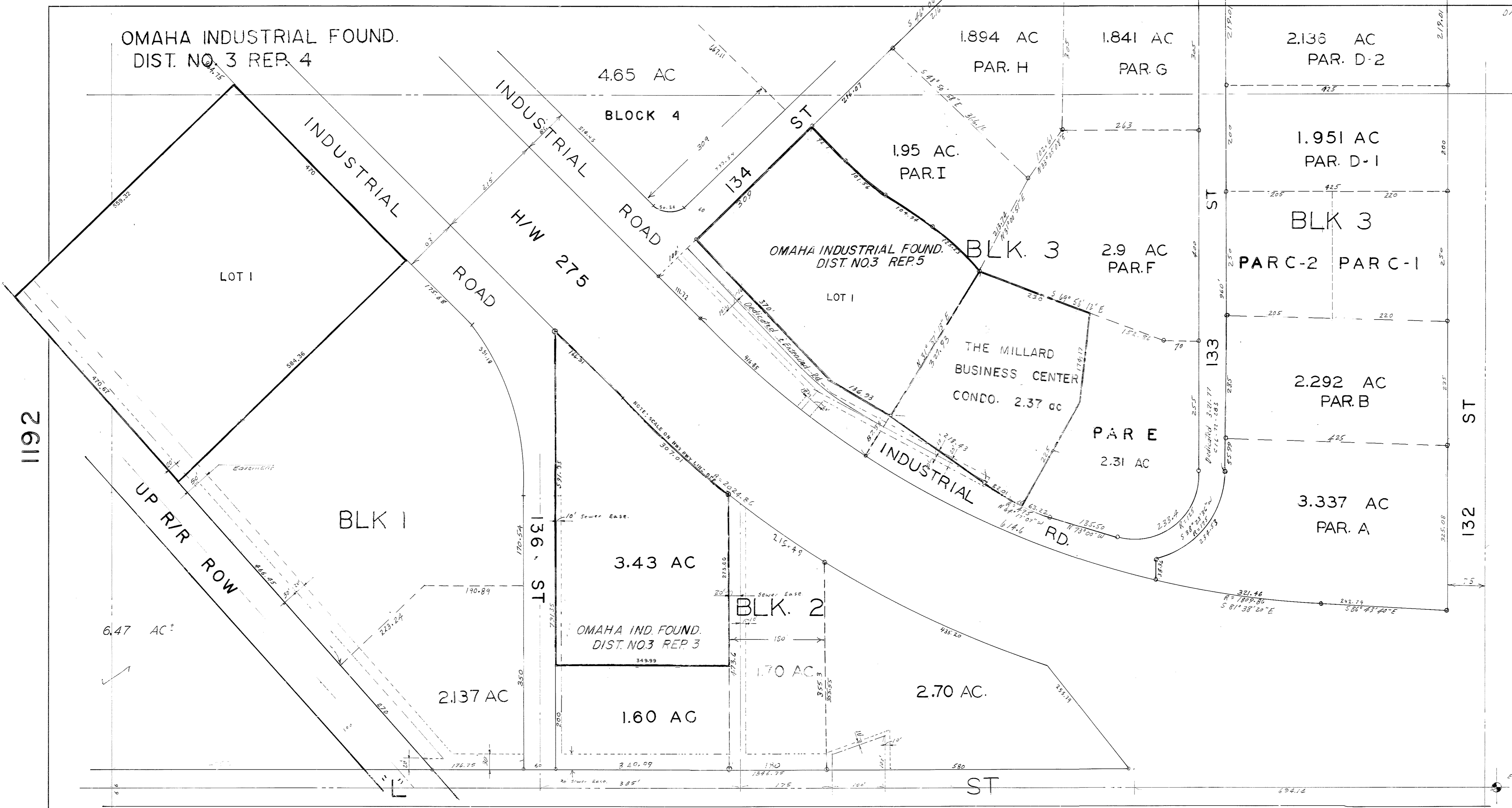
2.137 AC

6.47 AC[±]

OMAHA INDUSTRIAL FOUNDATION DISTRICT NO. 3

1189

S 1/2 NE 1/4 1-14-11



1192

1080