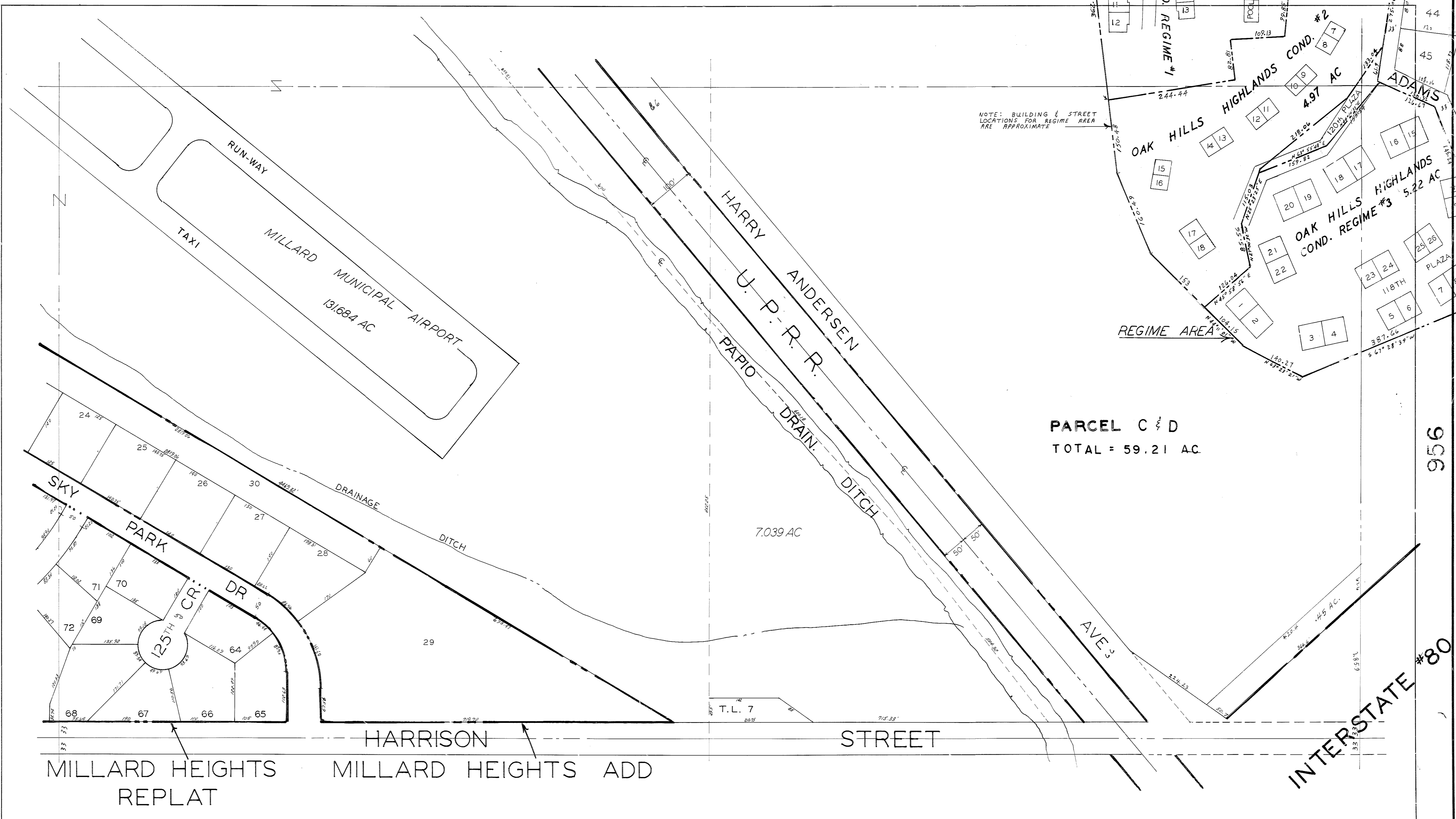


1069

1067

1068

956



NOTE: BUILDING & STREET  
LOCATIONS FOR REGIME AREA  
ARE APPROXIMATE

PARCEL C & D  
TOTAL = 59.21 AC.

MILLARD HEIGHTS  
REPLAT

MILLARD HEIGHTS ADD

SARPY COUNTY

S 1/2 SE 1/4 7-14-12