

PARCEL AREA TABLE with columns for Parcel #, Area (SF), and Parcel Area. Includes a list of 30 parcels with their respective areas.

PARCEL AREA TABLE with columns for Parcel #, Area (SF), and Parcel Area. Includes a list of 30 parcels with their respective areas.

SECTION CORNER TIES with columns for NW, NE, SW, and SE corners, detailing bearings and distances for various points.

CENTERLINE CURVE TABLE and PARCEL CURVE TABLE with columns for Curve #, Radius, Arc Length, Chord Length, and Delta.



SARPY COUNTY TREASURER'S CERTIFICATE: THIS IS TO CERTIFY THAT I FIND NO REGULAR NOR SPECIAL TAXES DUE OR DELINQUENT AGAINST THE PROPERTY DESCRIBED IN THE LAND SURVEYOR'S CERTIFICATE AND EMBRACED IN THIS PLAT, AS SHOWN BY THE RECORDS OF THIS OFFICE. This is dated 2nd day of February 2018.

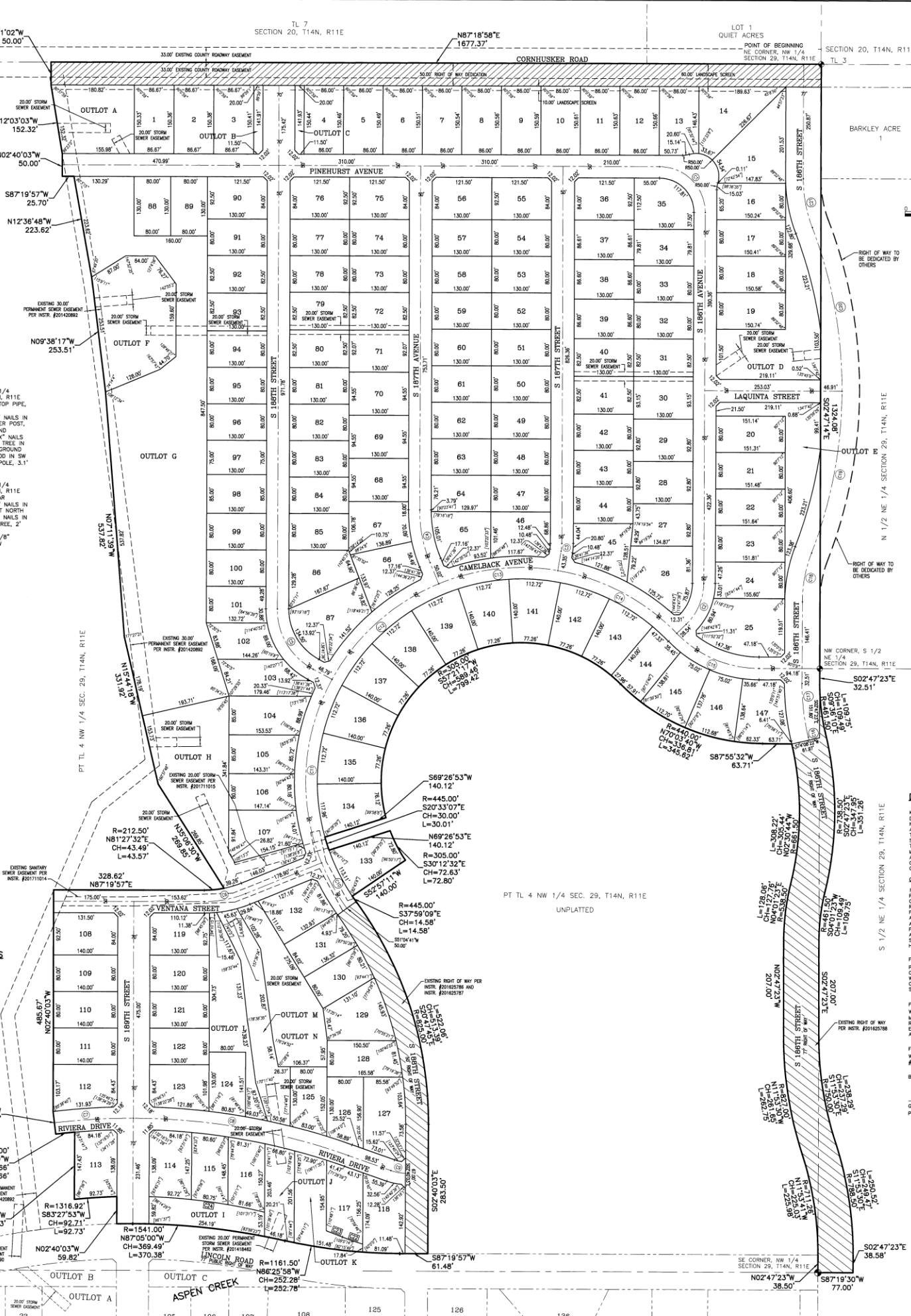
REVIEW BY SARPY COUNTY PUBLIC WORKS: THIS PLAT OF ASPEN CREEK NORTH, LOTS 1 THROUGH 147, INCLUSIVE, AND OUTLOTS A THROUGH N, INCLUSIVE, WAS REVIEWED BY THE SARPY COUNTY SURVEYOR'S OFFICE THIS 2nd DAY OF FEBRUARY 2018.

APPROVAL OF GRETA CITY ENGINEER: THIS PLAT OF ASPEN CREEK NORTH, LOTS 1 THROUGH 147, INCLUSIVE, AND OUTLOTS A THROUGH N, INCLUSIVE, WAS APPROVED BY THE ENGINEER OF THE CITY OF GRETA, NEBRASKA ON THIS 21st DAY OF FEBRUARY 2018.

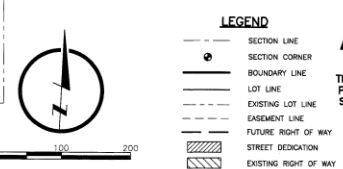
APPROVAL OF PLANNING COMMISSION OF GRETA, NEBRASKA: THIS PLAT OF ASPEN CREEK NORTH, LOTS 1 THROUGH 147, INCLUSIVE, AND OUTLOTS A THROUGH N, INCLUSIVE, WAS APPROVED BY THE PLANNING COMMISSION OF GRETA, NEBRASKA ON THIS 21st DAY OF FEBRUARY 2018.

APPROVAL OF GRETA CITY COUNCIL: THIS PLAT OF ASPEN CREEK NORTH, LOTS 1 THROUGH 147, INCLUSIVE, AND OUTLOTS A THROUGH N, INCLUSIVE, WAS APPROVED AND ACCEPTED BY THE CITY COUNCIL OF GRETA, NEBRASKA, THIS 21st DAY OF FEBRUARY 2018.

MAYOR: Jimmy A. Jindou, CITY CLERK: [Signature]



LOCATED IN: NW 1/4 NW 1/4 SEC. 29, T14N, R11E; NE 1/4 NW 1/4 SEC. 29, T14N, R11E; SW 1/4 NW 1/4 SEC. 29, T14N, R11E; SE 1/4 NW 1/4 SEC. 29, T14N, R11E.



LAND SURVEYOR'S CERTIFICATE: I HEREBY CERTIFY THAT I HAVE MADE A BOUNDARY SURVEY OF THE SUBDIVISION HEREIN AND THAT PERMANENT MONUMENTS HAVE BEEN PLACED AT ALL CORNER AND END POINTS OF CURVES ON THE BOUNDARY... DATE: 10-05-2017

DEDICATION: KNOW ALL PERSONS BY THESE PRESENTS THAT WE, BHI DEVELOPMENT, INC., A NEBRASKA CORPORATION, OWNERS AND CORE BANK, MORTGAGEES, OF THE LAND DESCRIBED IN THE LAND SURVEYOR'S CERTIFICATE AND EMBRACED IN THIS PLAT, HAVE GRANTED TO THE CITY OF GRETA, NEBRASKA, AND ANY TELECOMMUNICATIONS ENTITY OR OTHER CORPORATION TRANSMITTING COMMUNICATIONS SIGNALS AUTHORIZED TO USE THE CITY STREETS...

FOR WATER AND GAS: PERPETUAL EASEMENTS SHALL BE GRANTED TO THE CITY OF GRETA, NEBRASKA AND BLACK HILLS ENERGY, THEIR SUCCESSORS AND ASSIGNS, TO INSTALL, OPERATE, MAINTAIN, REPAIR AND RENEW PIPELINES, HYDRAULIC AND OTHER RELATED FACILITIES... FOR DRAINAGE AND STORM SEWERS: WE DO HEREBY GRANT PERPETUAL STORM SEWER EASEMENTS AND THE PERPETUAL DRAINAGE EASEMENTS SHOWN HEREIN FOR THE CONSTRUCTION AND MAINTENANCE OF SAID UTILITIES TO THE CITY OF GRETA, NEBRASKA AND ANY TELECOMMUNICATIONS ENTITY OR OTHER CORPORATION TRANSMITTING COMMUNICATIONS SIGNALS AUTHORIZED TO USE THE CITY STREETS...

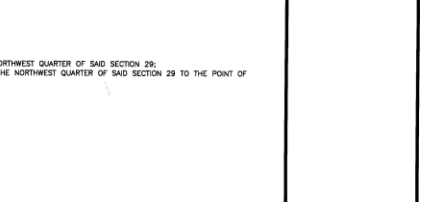
BHI DEVELOPMENT, INC., A NEBRASKA CORPORATION, OWNER. CORE BANK, MORTGAGEE. DAVID HARTMAN, SENIOR VICE PRESIDENT.

ACKNOWLEDGEMENT OF NOTARIES: STATE OF NEBRASKA } SS. COUNTY OF Sarpy) THE FOREGOING INSTRUMENT WAS ACKNOWLEDGED BEFORE ME THIS 21st DAY OF February 2018.

FILED SARPY COUNTY NEBRASKA INSTRUMENT NUMBER: 2018-02856. REGISTER OF DEEDS: [Signature]

ASPEN CREEK NORTH: LOTS 1 THROUGH 147, INCLUSIVE, AND OUTLOTS A THROUGH N, INCLUSIVE, ASPEN CREEK NORTH, BEING A PLATTING OF PART OF THE NORTHWEST QUARTER AND THE SOUTH HALF OF THE NORTHEAST QUARTER OF SECTION 29, TOWNSHIP 14 NORTH, RANGE 11 EAST OF THE 6TH P.M., SARPY COUNTY, NEBRASKA.

LAMP RYNEARSON: 14710 West Dodge Road, Suite 100, Omaha, Nebraska 68154-2027. www.LRA-inc.com



FINAL PLAT

STATE OF NEBRASKA } SS. COUNTY OF Sarpy) THE FOREGOING INSTRUMENT WAS ACKNOWLEDGED BEFORE ME THIS 30th DAY OF January 2018.

LOCATED IN:
 NW 1/4 NW 1/4 SEC. 29, T14N, R11E
 NE 1/4 NW 1/4 SEC. 29, T14N, R11E
 SW 1/4 NW 1/4 SEC. 29, T14N, R11E
 SE 1/4 NW 1/4 SEC. 29, T14N, R11E
 SW 1/4 NE 1/4 SEC. 29, T14N, R11E

FILED SARY COUNTY NEBRASKA
 INSTRUMENT NUMBER
 2018-02856

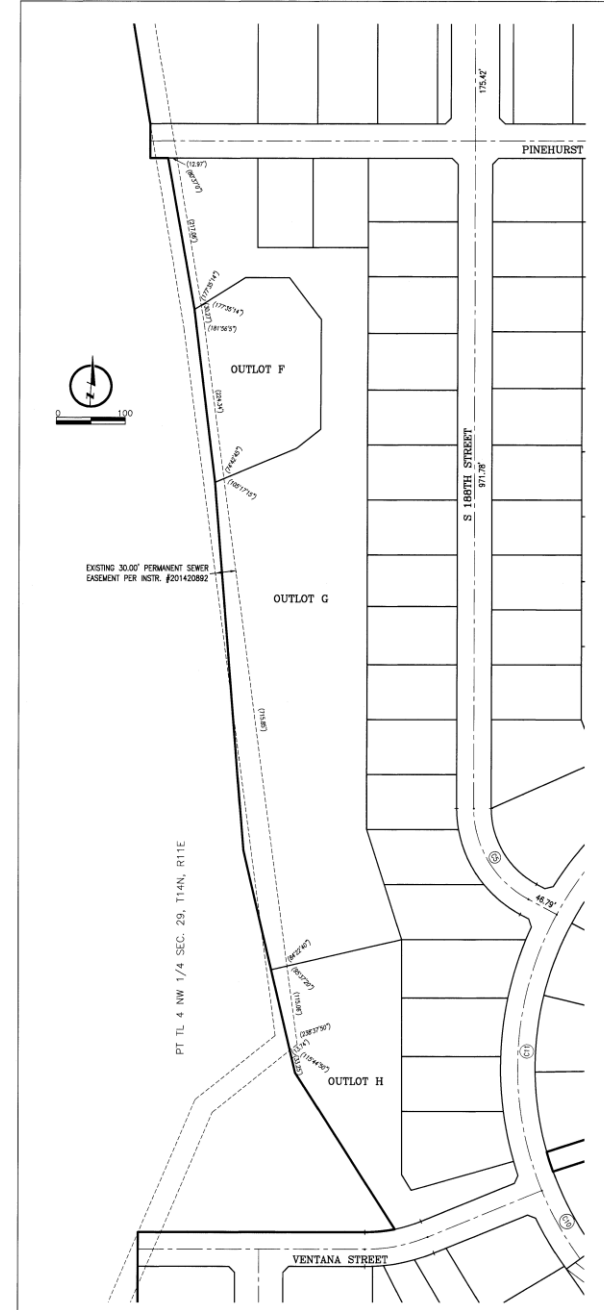
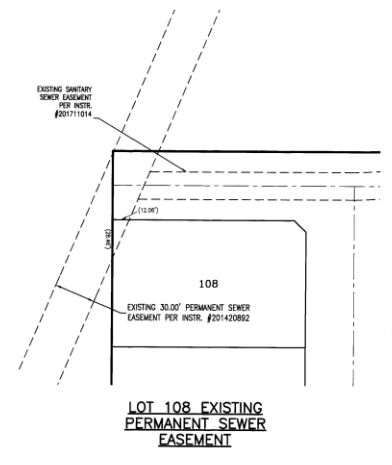
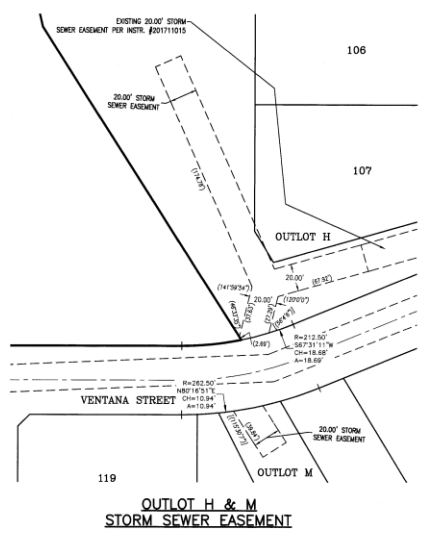
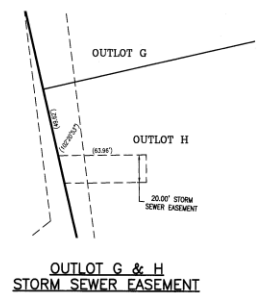
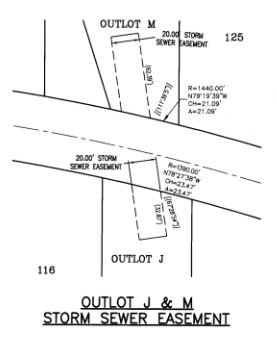
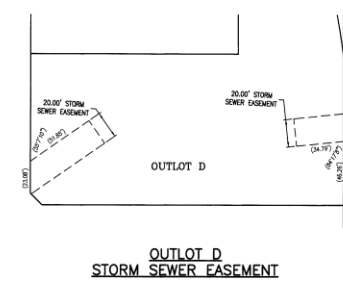
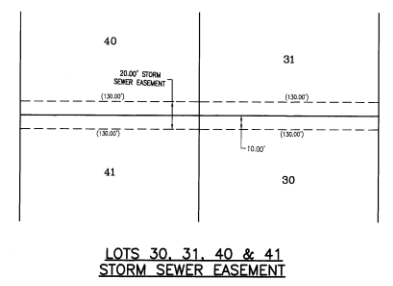
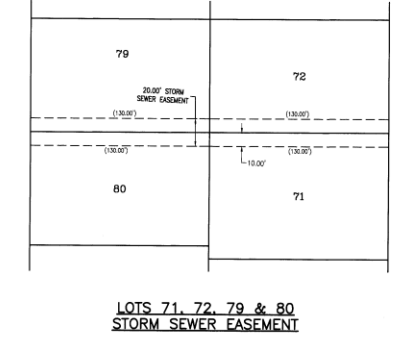
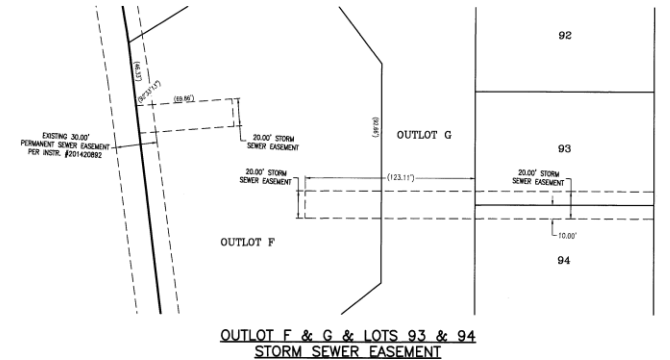
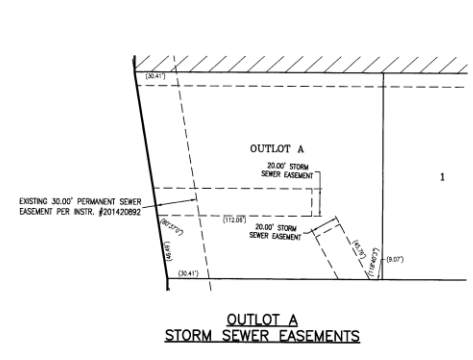
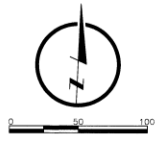
02/07/2018 02:59:10 PM
Blair D. Dooling
 REGISTER OF DEEDS



ASPEN CREEK NORTH

LOTS 1 THROUGH 147, INCLUSIVE, AND OUTLOTS A THROUGH N, INCLUSIVE, ASPEN CREEK NORTH, BEING A PLATTING OF PART OF THE NORTHWEST QUARTER AND THE SOUTH HALF OF THE NORTHWEST QUARTER OF SECTION 29, TOWNSHIP 14 NORTH, RANGE 11 EAST OF THE 6TH P.M., SARY COUNTY, NEBRASKA

- LEGEND**
- SECTION LINE
 - SECTION CORNER
 - BOUNDARY LINE
 - LOT LINE
 - - - EXISTING LOT LINE
 - - - EASEMENT LINE
 - - - FUTURE RIGHT OF WAY
 - ▨ STREET DEDICATION



DRAWN BY	DATE
CHECKED BY	DATE
DATE	7-19-2017
JOB NUMBER	1408
PROJECT NAME	ASPEN CREEK NORTH

LAMP RYNEARSON & ASSOCIATES
 14710 West Dodge Road, Suite 100
 Omaha, Nebraska 68154-2027
 www.LRA-inc.com

402-496-2498 | F
 402-496-2730 | F

ASPEN CREEK NORTH (LOTS 1 - 147 AND OUTLOTS A - N)
 SARY COUNTY, NEBRASKA

**FINAL
 PLAT**