

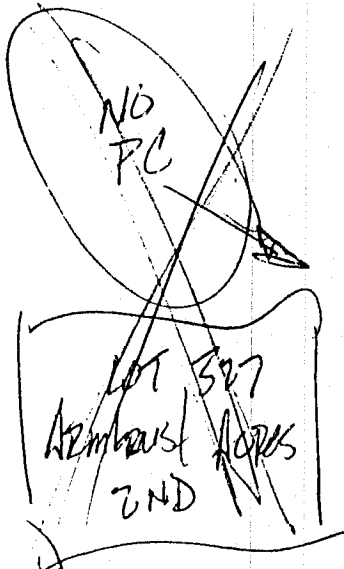
# Armbrust Acres High Point

PD

1820 11/11/87

508 2/19/88

Exec. to OPFD, cable t.v. companies,  
and NWS for UTM on, over,  
through, under - across a 5' wide  
SLC abutting the front-side  
B/Ls and on 8' wide S/L  
abutting the rear B/Ls.



Declaration

658 8/24/81

281 8/26/81

contains certain  
restr on S.P.

Exec. to OPFD, NWS, MUD,  
and SDD# 298 of DC, N. for UTM  
over, through, under and upon an  
8' wide S/L adj. the rear lines  
and a 5' wide S/L adj. the side  
B/Ls of all lots.