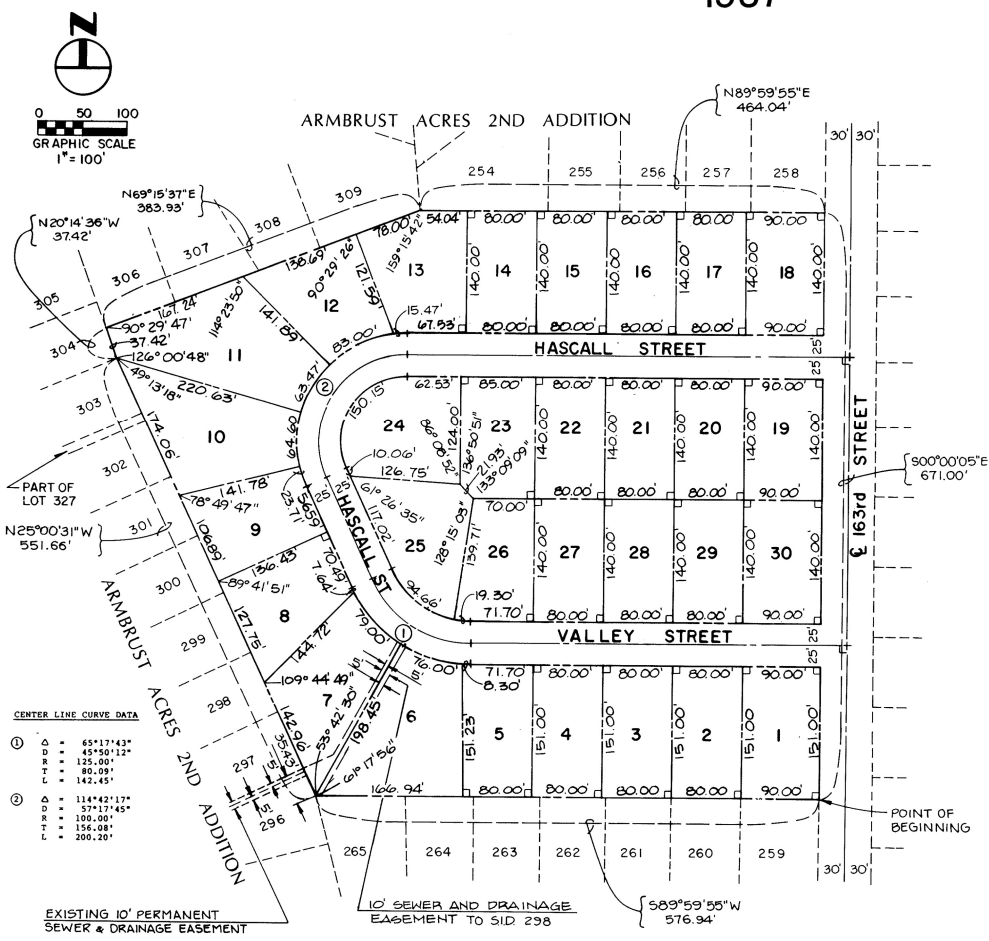


ARMBRUST ACRES HIGH POINT

LOTS 1 THRU 30 INCLUSIVE
 A REPLAT OF PART OF LOT 327, ARMBRUST ACRES 2ND ADDITION,
 SAID REPLAT BEING LOCATED IN THE NW 1/4 OF
 SECTION 34, TOWNSHIP 15 NORTH, RANGE 11 EAST
 DOUGLAS COUNTY, NEBRASKA
 1987

#42-E-3

ARMBRUST ACRES HIGH POINT
 E3 #42
 (1002)



SURVEYOR'S CERTIFICATE

I, Charles W. Ahern, a registered Land Surveyor in the State of Nebraska, do hereby certify that a survey of the outer boundaries of this plat of ARMBRUST ACRES HIGH POINT has been made and that permanent iron pins (1-inch x 24-inch pinched pipe) have been installed at the corners of all lots, streets, angle points, and the terminal points of all curves. The limits and boundaries of said subdivision are as follows:

A tract of land being a replat of part of Lot 327, Armburst Acres, 2nd Addition, a subdivision as platted and recorded in Douglas County, Nebraska, said Replat being located in the NW 1/4 of Section 34, Township 15 North, Range 11 East of the 6th PM. Said tract of land is more particularly described as follows:

Beginning at the SE corner of said Lot 327; thence S89°55'55"W along south line of said Lot 327 a distance of 576.94 feet to a point; said point also being the SW corner of said Lot 327; thence N25°00'31"W along the west line of said Lot 327 a distance of 551.66 feet to a point; thence N20°14'36"W along said west line a distance of 37.42 feet to a point; said point being the NW corner of said Lot 327; thence N69°15'37"E along the northerly line of said Lot 327 a distance of 383.93 feet to a point; thence S89°55'55"E along the north line of said Lot 327 a distance of 464.04 feet to a point; said point also being the NE corner of Lot 327; thence S00°00'05"E along the east line of said Lot 327, said east line also being the west right-of-way line of 163rd Street, a distance of 671.00 feet to the point of beginning, said tract of land containing 10.626 acres more or less.

Dated this 11th day of November, 1987.

Charles W. Ahern
 Charles W. Ahern
 Registered Land Surveyor LS 112

NEBRASKA REGISTERED LAND SURVEYOR CHARLES W. AHERN

COUNTY SURVEYOR'S CERTIFICATE

This plat of ARMBRUST ACRES HIGH POINT was reviewed by the Douglas County Surveyor's Office on this 18th day of November, 1987, A.D.

Philip A. Bunka
 Philip A. Bunka
 County Surveyor

DOUGLAS COUNTY ENGINEER SEAL

COUNTY TREASURER'S CERTIFICATE

This is to certify that I find no regular or special taxes due or delinquent against the property described in the Surveyor's Certificate and embraced in the plat as shown by the records of this office.

Dated this 17th day of Nov., 1987, A.D.

Sam J. Hovely
 Sam J. Hovely
 County Treasurer

DOUGLAS COUNTY NEBRASKA SEAL

APPROVALS OF CITY ENGINEER OF OMAHA

I hereby approve this plat of ARMBRUST ACRES HIGH POINT, as to the Design Standards this 20th day of November, 1987, A.D.

Raymond A. Reumann
 Raymond A. Reumann
 City Engineer

I hereby certify that adequate provisions have been made for compliance with Chapter 31 of the Omaha Municipal Code this 18th day of November, 1987, A.D.

Raymond A. Reumann
 Raymond A. Reumann
 City Engineer

APPROVAL OF THE CITY PLANNING BOARD

This plat of ARMBRUST ACRES HIGH POINT was approved by the City Planning Board of the City of Omaha this 22nd day of November, 1987, A.D.

Michael D. Jolley
 Michael D. Jolley
 Chairman

OMAHA CITY COUNCIL ACCEPTANCE

This plat of ARMBRUST ACRES HIGH POINT was approved and accepted by the City Council of Omaha this 22nd day of November, 1987, A.D.

Bonnie Simon
 Bonnie Simon
 Mayor

Samuel J. ...
 City Council President

SEAL OF THE CITY OF OMAHA

DEDICATION

KNOW ALL MEN THESE PRESENTS:

That we Robert L. Mierendorf, President, and Louis R. Seybold, Vice-President and Secretary, of M.N.S. Corporation, a Nebraska Corporation, sole Owners and proprietors of the land embraced within this plat and described in the Surveyor's Certificate, have caused the same to be subdivided into lots and streets, said subdivision to be known as ARMBRUST ACRES HIGH POINT, the lots to be numbered as shown (Lots 1 through 30 inclusive), and we approve the disposition of the property as shown on this plat and we hereby dedicate to the public for the public use the streets as shown herein and we do also grant the easements shown on the plat to the agencies designated and their assigns for the purposes noted. We do further grant a perpetual easement in favor of and granting to the Omaha Public Power District, and any company which has been granted a franchise to provide a Cable Television System within the boundaries of this plat, and the Northwestern Bell Telephone Company their successors and assigns, to erect and operate, maintain, repair and renew underground cables or conduits, poles with the necessary supports, sustaining wires, cross arms, guys and anchors and other instrumentalities, and extend thereon wire for the carrying and transmission of electric current for light, heat, power and for the transmission of signals and sounds for all kinds including signals provided by a Cable Television System, and the reception on, over, through, under and across a five (5) foot wide strip of land abutting the front and the side boundary lines of all lots; and eight (8) foot wide strip of land abutting the rear boundary lines of all lots. No permanent building or retaining walls shall be placed in the above described easement ways; but the same may be used for gardens, shrubs, landscaping and other purposes that do not then or later interfere with the aforesaid uses or rights herein granted.

IN WITNESS WHEREOF, we do hereby set our hands this 11th day of November, 1987, A.D.

CORPORATION ACKNOWLEDGEMENT

STATE OF Nebraska

COUNTY OF Douglas

On this 11th day of November, 1987, A.D., before me a Notary Public in and for said County, personally came the above named Robert L. Mierendorf and Louis R. Seybold of M.N.S. Corporation, a Nebraska Corporation, who are personally known to me to be the identical persons whose names are affixed to the instrument as President, and Vice-President and Secretary of said Corporation, and they acknowledge the execution therefore to be their voluntary act and deed as such officers and voluntary act and deed of said Corporation and the Corporate Seal of said Corporation was hereto affixed by its authority.

Witness my hand and official seal the last date aforesaid.

J.P. Raleigh
 Notary Public

My commission expires on the June day of 1988, A.D.

FOR M.N.S. CORPORATION

Robert L. Mierendorf
 Robert L. Mierendorf, President
 M.N.S. Corporation

Louis R. Seybold
 Louis R. Seybold, Vice-President & Secretary
 M.N.S. Corporation

GENERAL NOTARY-STATE OF NEBRASKA
 JOHN C. RALEIGH, JR.
 My Comm. Exp. June 16, 1988

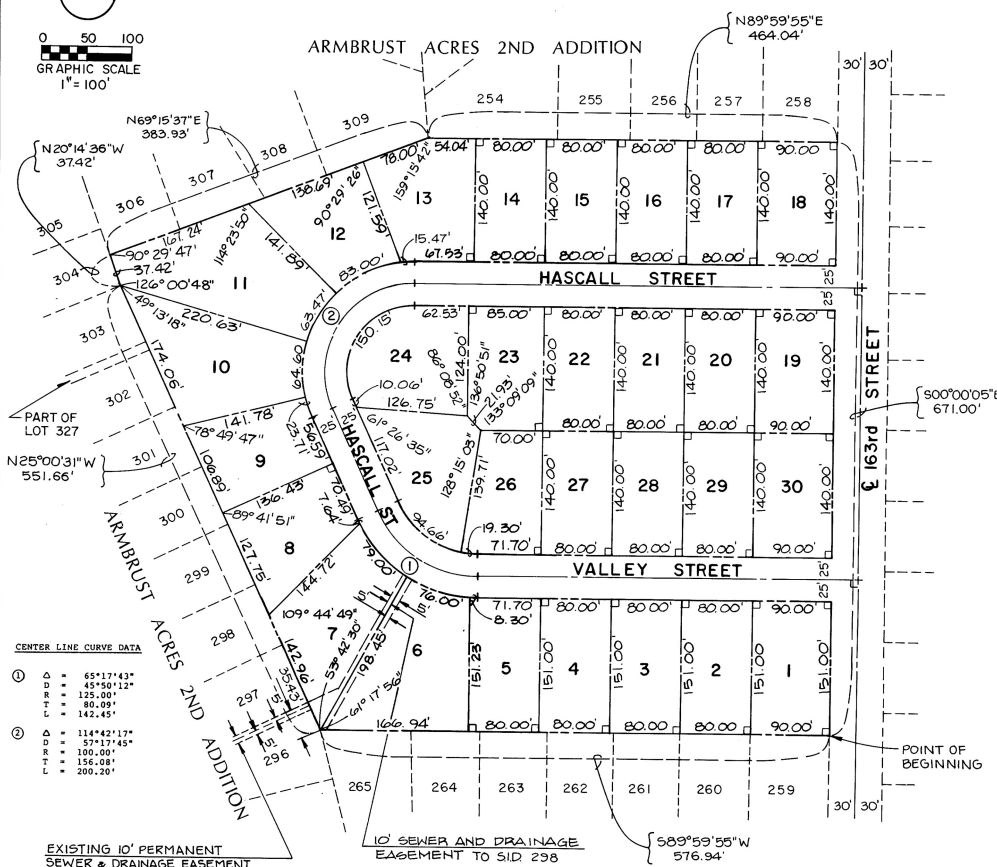
ARMBRUST ACRES
E 3 # 42
(20#2)

ARMBRUST ACRES HIGH POINT

LOTS 1 THRU 30 INCLUSIVE A REPLAT OF PART OF LOT 327, ARMBRUST ACRES 2ND ADDITION, SAID REPLAT BEING LOCATED IN THE NW 1/4 OF SECTION 34, TOWNSHIP 15 NORTH, RANGE 11 EAST DOUGLAS COUNTY, NEBRASKA 1987



0 50 100
GRAPHIC SCALE
1" = 100'



CENTER LINE CURVE DATA

①	Δ	65°17'43"
	P	45°50'12"
	L	125.00'
	T	80.09'
	L	142.45'
②	Δ	114°42'17"
	P	57°17'45"
	L	100.00'
	T	156.08'
	L	200.20'

EXISTING 10' PERMANENT
SEWER & DRAINAGE EASEMENT

DEDICATION

KNOW ALL MEN THESE PRESENTS:

That we Robert L. Mierendorf, President, and Louis R. Seybold, Vice-President and Secretary, of M.N.S. Corporation, a Nebraska Corporation, sole Owners and proprietors of the land embraced within this plat and described in the Surveyor's Certificate, have caused the name to be subdivided into lots and streets, said subdivision to be known as ARMBRUST ACRES HIGH POINT, the lots to be numbered as shown (Lots 1 through 30 inclusive), and we approve the disposition of the property as shown on this plat and we hereby dedicate to the public for the use of the streets as shown herein and we do also grant the easements shown on the plat to the agencies designated and their assigns for the purposes noted. We do further grant a perpetual easement in favor of and granting to the Omaha Public Power District, and any company which has been granted a franchise to provide a Cable Television System within the boundaries of this plat, and the Northwestern Bell Telephone Company their successors and assigns, to erect and operate, maintain, repair and renew underground cables or conduits, poles with the necessary supports, sustaining wires, cross arms, guys and anchors and other instrumentalities, and extend thereon wire for the carrying and transmission of electric current for light, heat, power and for the transmission of signals and sounds for all kinds including signals provided by a Cable Television System, and the reception on, over, through, under and across a five (5) foot wide strip of land abutting the front and the side boundary lines of all lots; and eight (8) foot wide strip of land abutting the rear boundary lines of all lots. No permanent building or retaining walls shall be placed in the above described easement ways, but the same may be used for gardens, shrubs, landscaping and other purposes that do not then or later interfere with the aforesaid uses or rights herein granted.

IN WITNESS WHEREOF, we do hereby set our hands this 11th day of November, 1987, A.D.

FOR M.N.S. CORPORATION

Robert L. Mierendorf
Robert L. Mierendorf, President
M.N.S. Corporation

Louis R. Seybold
Louis R. Seybold, Vice-President & Secretary
M.N.S. Corporation

CORPORATION ACKNOWLEDGMENT

STATE OF Nebraska

SS

COUNTY OF Douglas

On this 11th day of November, 1987, A.D., before me a Notary Public in and for said County, personally came the above named Robert L. Mierendorf and Louis R. Seybold of M.N.S. Corporation, a Nebraska Corporation, who are personally known to me to be the identical persons whose names are affixed to the instrument as President, and Vice-President and Secretary of said Corporation, and they acknowledge the execution thereof to be their voluntary act and deed as such officers and voluntary act and deed of said Corporation and the Corporate Seal of said Corporation was hereto affixed by its authority.

Witness my hand and official seal the last date aforesaid.

John C. Raleigh, Jr.
Notary Public

My commission expires on the 10th day of January, 1988, A.D.

STATE OF NEBRASKA
JOHN C. RALEIGH, JR.
My Comm. Exp. June 14, 1991

SURVEYOR'S CERTIFICATE

I, Charles W. Ahern, a registered Land Surveyor in the State of Nebraska, do hereby certify that a survey of the outer boundaries of this plat of ARMBRUST ACRES HIGH POINT has been made and that permanent iron pins (1-inch x 24-inch pinched pipe) have been installed at the corners of all lots, streets, angle points, and the terminal points of all curves. The limits and boundaries of said subdivision are as follows:

A tract of land being a Replat of part of Lot 327, Armbrust Acres, 2nd Addition, a subdivision as platted and recorded in Douglas County, Nebraska, said Replat being located in the NW 1/4 of Section 34, Township 15 North, Range 11 East, of the 6th PM. Said tract of land is more particularly described as follows:

Beginning at the SE corner of said Lot 327; thence S89°59'55"W along south line of said Lot 327 a distance of 576.94 feet to a point, said point also being the SW corner of said Lot 327; thence N25°00'31"W along the west line of said Lot 327 a distance of 551.66 feet to a point; thence S20°14'36"W along said west line a distance of 37.42 feet to a point, said point being the NW corner of said Lot 327; thence N69°15'37"E along the northerly line of said Lot 327 a distance of 383.93 feet to a point; thence N69°59'55"E along the north line of said Lot 327 a distance of 464.04 feet to a point, said point also being the NE corner of Lot 327; thence S00°00'05"E along the east line of said Lot 327, said east line also being the west right-of-way line of 163rd Street, a distance of 671.00 feet to the point of beginning, said tract of land containing 10.626 acres more or less.

Dated this 11th day of November, 1987.

Charles W. Ahern
Charles W. Ahern
Registered Land Surveyor LS 112

NEBRASKA
REGISTERED
LAND SURVEYOR
CHARLES W. AHERN
COUNTY SURVEYOR'S CERTIFICATE

This plat of ARMBRUST ACRES HIGH POINT was reviewed by the Douglas County Surveyor's Office on this 12th day of November, 1987, A.D.

John A. Burke
County Surveyor

DOUGLAS COUNTY ENGINEER
OFFICIAL
SEAL
NEBRASKA
COUNTY SURVEYORS CERTIFICATE

This is to certify that I find no regular or special taxes due or delinquent against the property described in the Surveyor's Certificate and embraced in the plat as shown by the records of this office.

Dated this 11th day of Nov, 1987, A.D.

Sam J. Nowak
County Treasurer

DOUGLAS COUNTY NEBRASKA
OFFICIAL
SEAL
COUNTY TREASURERS CERTIFICATE

APPROVALS OF CITY ENGINEER OF OMAHA

I hereby approve this plat of ARMBRUST ACRES HIGH POINT, as to the Design Standards this 20th day of November, 1987, A.D.

Randy Sherman
City Engineer

I hereby certify that adequate provisions have been made for compliance with Chapter 23 of the Omaha Municipal Code this 16th day of February, 1988, A.D.

Randy Sherman
City Engineer

APPROVAL OF THE CITY PLANNING BOARD

This plat of ARMBRUST ACRES HIGH POINT, was approved by the City Planning Board of the City of Omaha this 11th day of November, 1987, A.D.

Michael D. Daley
Chairman

OMAHA CITY COUNCIL ACCEPTANCE

This plat of ARMBRUST ACRES HIGH POINT was approved and accepted by the City Council of Omaha this 17th day of February, 1987, A.D.

Michael D. Daley
City Council President

1573 Rec'd
RECEIVED
FEB 19 PM 3:17
GEORGE A. FRIEDRICH
REGISTERED PLANNING ENGINEER

BK 1820 N CJO FEE 20.50
PG 528 N DEL MC
OR Rec'd COMP F/B 2015 12 28