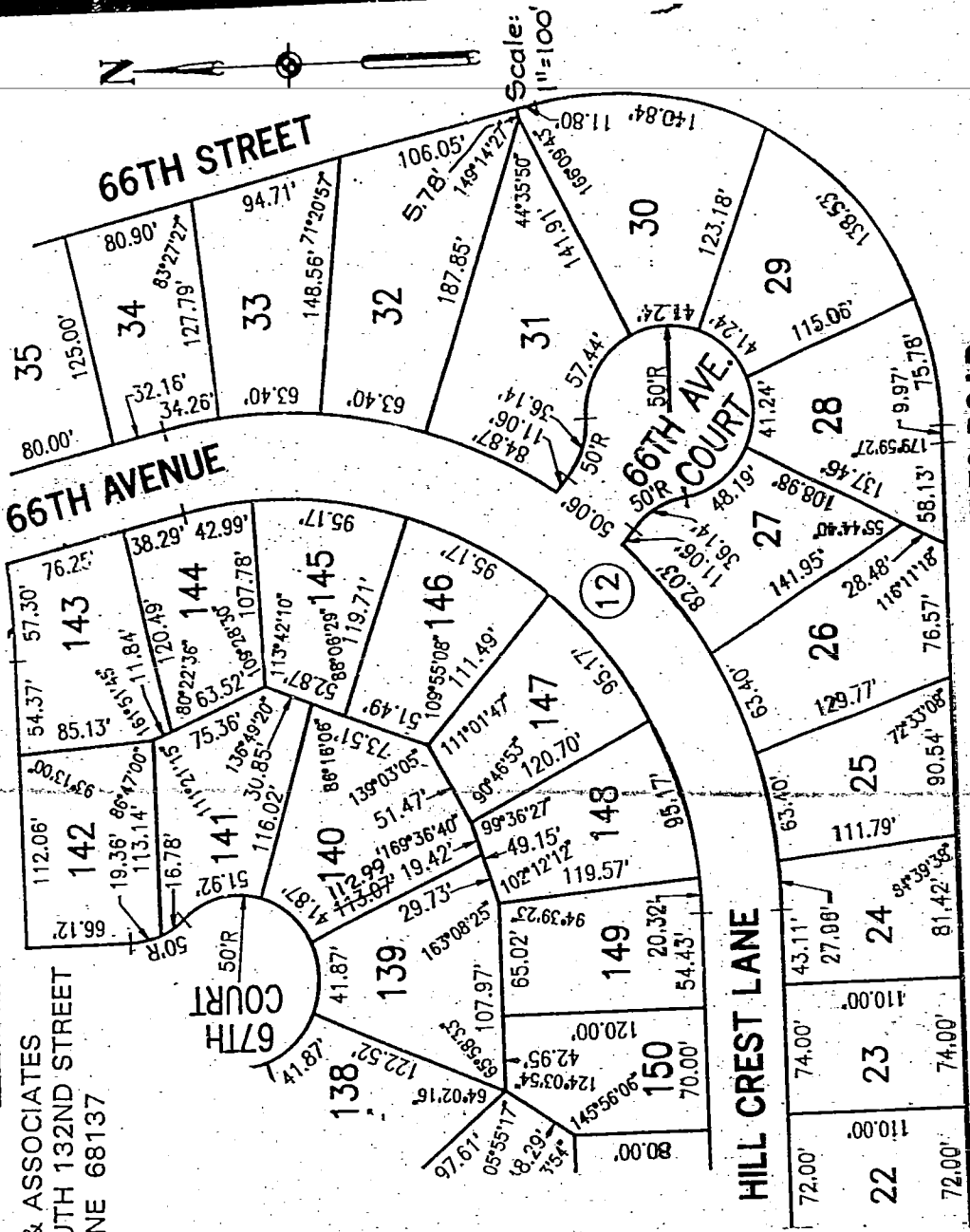


Proof of
 D.E. [Signature]
 Ver. [Signature]
 Filmed
 Checked
 Fee \$ 7.00

ELLIOTT & ASSOCIATES
 5316 SOUTH 132ND STREET
 OMAHA, NE 68137

Filed For Record April 15, 1994 at 11:27 A.M.
 Instrument # 94-13490
 Carol A. Gavin Register of Deed Sarpy City NE



GILES ROAD

AFFIDAVIT OF CORRECTION

To correct certain dimensions of Lots 139, 140, 32 and 30, Ardmore East, a subdivision located in the SW 1/4 and SE 1/4 of Section 13, Township 14 North, Range 12 East of the 6th P.M., Sarpy County, Nebraska.

- The Easterly dimension of Lot 139, to read 112.99 feet instead of 113.07 feet
- The Westerly dimension of Lot 140, to read 112.99 feet instead of 113.07 feet
- The Southerly dimension of Lot 32, that was omitted, to read 5.78 feet.
- The Northerly dimension of Lot 30, that was omitted, to read 5.78 feet.

AFFIDAVIT

Correction to Ardmore East, a subdivision located in the SW 1/4 and the SE 1/4 of Section 13, Township 14 North, Range 12 East of the 6th P.M., Sarpy County, Nebraska.

I, Robert Clark, do hereby submit the above drawing in order to correct the error in dimensions of Lots 139, 140, 30 and 32, Ardmore East, a subdivision located in Sarpy County, Nebraska, as recorded in Instrument No. 93-21957 of the records in the Register of Deed Office, Sarpy County, Nebraska.

I certify that I am the same identical person whose name appears in the Surveyor's Certification of said Ardmore East, Sarpy County, NE.

Robert Clark
 ROBERT CLARK, LS-419

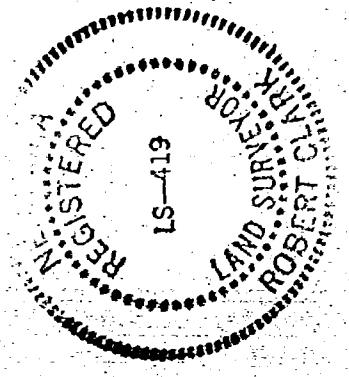
STATE OF NEBRASKA)
) SS
 COUNTY OF DOUGLAS)

on the 14 day of JUNE, 1994, before me a Notary Public, qualified and commissioned in, and for said County, personally appeared Robert Clark, who is personally known to me to be the same and identical person whose name is affixed to the above Affidavit, and he acknowledged the signing thereof to be his voluntary act and deed.

Witness my hand and official seal at Omaha, Nebraska, on the date

STATE OF NEBRASKA
 ROBERT CLARK, Notary Public
 My Comm. Exp. April 30, 1995

Homer R. Hunt
 HOMER R. HUNT
 NOTARY PUBLIC



1	179.91	1.74
2	15.08	0.07
3	55.28	0.27
4	46.52	0.22
5	95.27	0.44
6	90.22	0.42
7	10.59	0.05
8	13.44	0.06
9	1500.00	7.00
10	1018.50	4.98
11	5.6888	0.27
12	2.815	0.13
13	95.96	0.46
14	34.2919	0.16
15	22.9079	0.11
16	22.9079	0.11
17	22.9079	0.11
18	22.9079	0.11
19	22.9079	0.11
20	22.9079	0.11
21	22.9079	0.11
22	22.9079	0.11
23	22.9079	0.11
24	22.9079	0.11
25	22.9079	0.11
26	22.9079	0.11
27	22.9079	0.11
28	22.9079	0.11
29	22.9079	0.11
30	22.9079	0.11
31	22.9079	0.11
32	22.9079	0.11
33	22.9079	0.11
34	22.9079	0.11
35	22.9079	0.11
36	22.9079	0.11
37	22.9079	0.11
38	22.9079	0.11
39	22.9079	0.11
40	22.9079	0.11
41	22.9079	0.11
42	22.9079	0.11
43	22.9079	0.11
44	22.9079	0.11
45	22.9079	0.11
46	22.9079	0.11
47	22.9079	0.11
48	22.9079	0.11
49	22.9079	0.11
50	22.9079	0.11
51	22.9079	0.11
52	22.9079	0.11
53	22.9079	0.11
54	22.9079	0.11
55	22.9079	0.11
56	22.9079	0.11
57	22.9079	0.11
58	22.9079	0.11
59	22.9079	0.11
60	22.9079	0.11
61	22.9079	0.11
62	22.9079	0.11
63	22.9079	0.11
64	22.9079	0.11
65	22.9079	0.11
66	22.9079	0.11
67	22.9079	0.11
68	22.9079	0.11
69	22.9079	0.11
70	22.9079	0.11
71	22.9079	0.11
72	22.9079	0.11
73	22.9079	0.11
74	22.9079	0.11
75	22.9079	0.11
76	22.9079	0.11
77	22.9079	0.11
78	22.9079	0.11
79	22.9079	0.11
80	22.9079	0.11
81	22.9079	0.11
82	22.9079	0.11
83	22.9079	0.11
84	22.9079	0.11
85	22.9079	0.11
86	22.9079	0.11
87	22.9079	0.11
88	22.9079	0.11
89	22.9079	0.11
90	22.9079	0.11
91	22.9079	0.11
92	22.9079	0.11
93	22.9079	0.11
94	22.9079	0.11
95	22.9079	0.11
96	22.9079	0.11
97	22.9079	0.11
98	22.9079	0.11
99	22.9079	0.11
100	22.9079	0.11
101	22.9079	0.11
102	22.9079	0.11
103	22.9079	0.11
104	22.9079	0.11
105	22.9079	0.11
106	22.9079	0.11
107	22.9079	0.11
108	22.9079	0.11
109	22.9079	0.11
110	22.9079	0.11
111	22.9079	0.11
112	22.9079	0.11
113	22.9079	0.11
114	22.9079	0.11
115	22.9079	0.11
116	22.9079	0.11
117	22.9079	0.11
118	22.9079	0.11
119	22.9079	0.11
120	22.9079	0.11
121	22.9079	0.11
122	22.9079	0.11
123	22.9079	0.11
124	22.9079	0.11
125	22.9079	0.11
126	22.9079	0.11
127	22.9079	0.11
128	22.9079	0.11
129	22.9079	0.11
130	22.9079	0.11
131	22.9079	0.11
132	22.9079	0.11
133	22.9079	0.11
134	22.9079	0.11
135	22.9079	0.11
136	22.9079	0.11
137	22.9079	0.11
138	22.9079	0.11
139	22.9079	0.11
140	22.9079	0.11
141	22.9079	0.11
142	22.9079	0.11
143	22.9079	0.11
144	22.9079	0.11
145	22.9079	0.11
146	22.9079	0.11
147	22.9079	0.11
148	22.9079	0.11
149	22.9079	0.11
150	22.9079	0.11
151	22.9079	0.11
152	22.9079	0.11
153	22.9079	0.11
154	22.9079	0.11
155	22.9079	0.11
156	22.9079	0.11
157	22.9079	0.11
158	22.9079	0.11
159	22.9079	0.11
160	22.9079	0.11
161	22.9079	0.11
162	22.9079	0.11
163	22.9079	0.11
164	22.9079	0.11
165	22.9079	0.11
166	22.9079	0.11
167	22.9079	0.11
168	22.9079	0.11
169	22.9079	0.11
170	22.9079	0.11
171	22.9079	0.11
172	22.9079	0.11
173	22.9079	0.11
174	22.9079	0.11
175	22.9079	0.11
176	22.9079	0.11
177	22.9079	0.11
178	22.9079	0.11
179	22.9079	0.11
180	22.9079	0.11
181	22.9079	0.11
182	22.9079	0.11
183	22.9079	0.11
184	22.9079	0.11
185	22.9079	0.11
186	22.9079	0.11
187	22.9079	0.11
188	22.9079	0.11
189	22.9079	0.11
190	22.9079	0.11
191	22.9079	0.11
192	22.9079	0.11
193	22.9079	0.11
194	22.9079	0.11
195	22.9079	0.11
196	22.9079	0.11
197	22.9079	0.11
198	22.9079	0.11
199	22.9079	0.11
200	22.9079	0.11



Handwritten signature

APPROVAL OF COURT OFFICERS
I hereby approve of this plan of subdivision, the lots numbered as shown, on this 7th day of July, 1925.

APPROVAL OF LAYERS CITY PLANNING COMMISSION
This plan of subdivision, the lots numbered as shown, was approved by the City Planning Commission on this 7th day of July, 1925.

NOTES:
1. All angles on plan are 90° unless otherwise designated.
2. This is a proposed building easement and all of the lots are to be used for the purpose of building.

RIGHT-OF-WAY
By Order of Mayor
1925

RIGHT-OF-WAY
By Order of Mayor
1925

RIGHT-OF-WAY
By Order of Mayor
1925

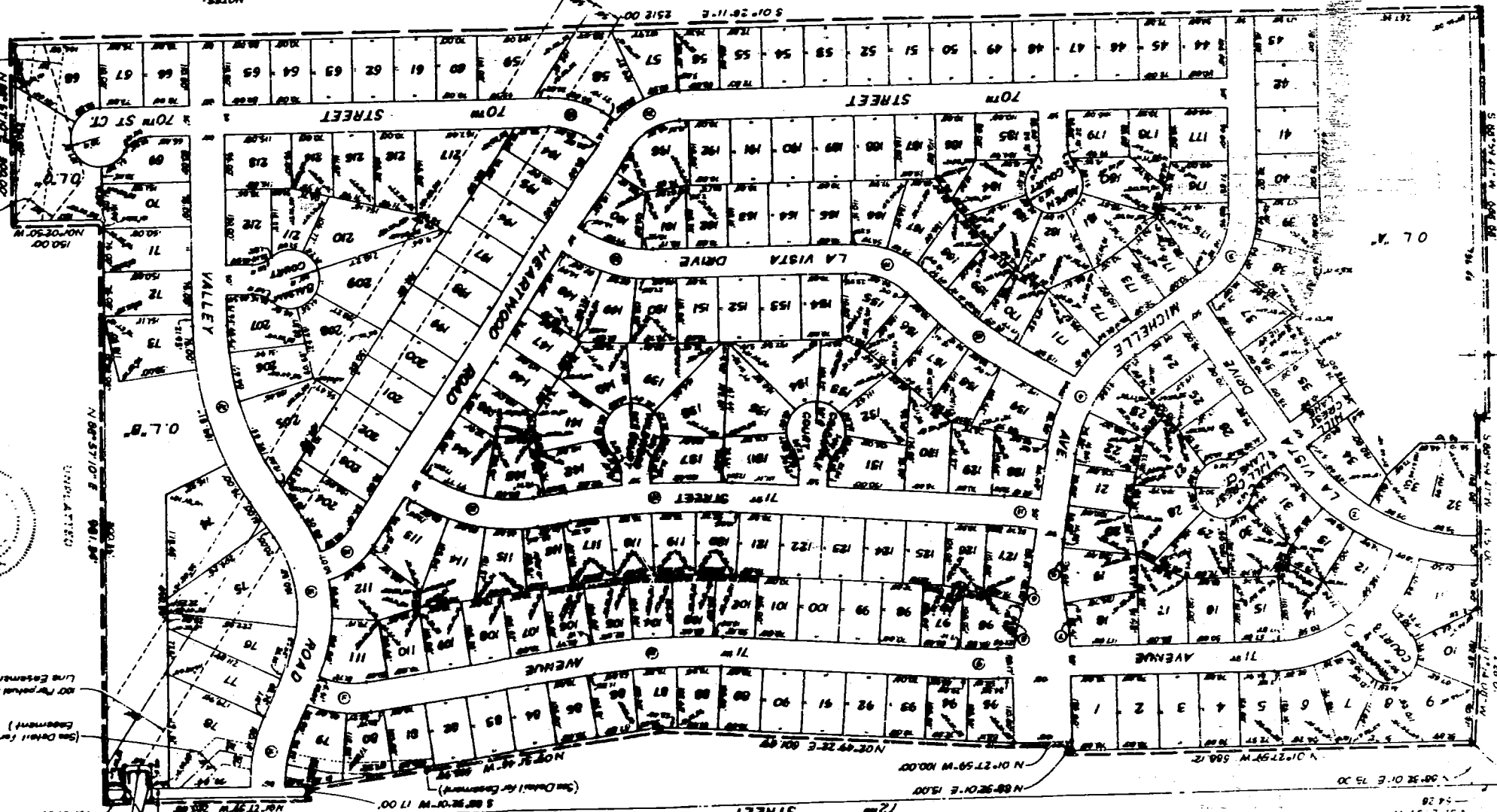
RIGHT-OF-WAY
By Order of Mayor
1925

RIGHT-OF-WAY
By Order of Mayor
1925

RIGHT-OF-WAY
By Order of Mayor
1925

RIGHT-OF-WAY
By Order of Mayor
1925

RIGHT-OF-WAY
By Order of Mayor
1925



SCALE 1 INCH = 100 FEET

LOTS 1 THRU 217 INCLUDING & OUTLOTS A, B, & C
BEING A PART OF THE S.W. 1/4 OF THE S.W. 1/4 OF SECTION 28, T. 11 N., R. 10 W., S. 11 E., LOS ANGELES COUNTY, CALIF.

ADDITIONAL RIGHT OF WAY (See Note 1)

ROAD

GILES