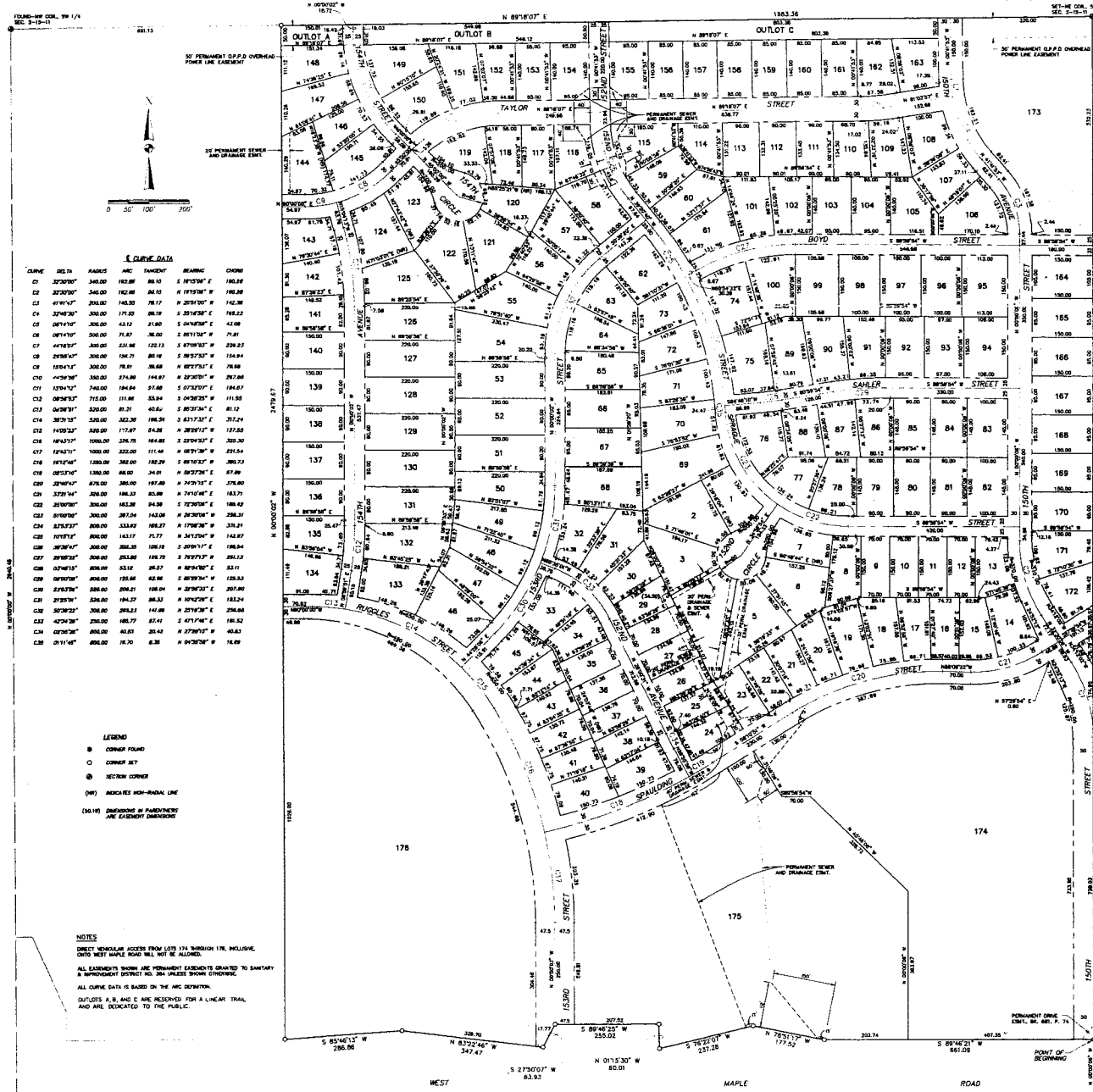


Torrey Pines

PART OF THE SW 1/4 OF SECTION 2, T15N, R16E OF THE 6TH P.M., DOUGLAS COUNTY, NEBRASKA
LOTS 1 THRU 176, INCLUSIVE AND OUTLOTS A, B, C, AND D

TORREY PINES L14-174



15240-16' CO. BY 1/4
SEC. 2-15-11

15240-16' CO. BY 1/4
SEC. 2-15-11



CURVE DATA

Table with columns: CURVE, DATA, RADIUS, ARC, TANGENT, BEARING, CHORD. Lists curve data for lots 1 through 176.

- LEGEND
- CORNER FOUND
- CORNER SET
- SECTION CORNER
- (DW) INDICATES HIGH-WATER LINE
- (DA) INDICATES IN PLACEMENT ARE EXISTING DIMENSIONS

NOTES
DIRECT VEHICULAR ACCESS FROM LOTS 174 THROUGH 176, INCLUSIVE, ONTO WEST MAPLE ROAD WILL NOT BE ALLOWED.
ALL EXISTING DIMENSIONS AND PERMANENT DIMENSIONS SHOWN TO BOUNDARY OR IMPROVEMENT DISTRICT OR TO ADJACENT SECTION CORNER.
ALL CURVE DATA IS BASED ON THE ARC DEFINITION.
OUTLOTS A, B, AND C ARE RESERVED FOR A LINEAR TRAIL AND ARE DEDICATED TO THE PUBLIC.

SURVEYOR'S CERTIFICATE
I, CHARLES W. HERR, A REGISTERED LAND SURVEYOR IN THE STATE OF NEBRASKA, DO HEREBY CERTIFY THAT A SURVEY OF THE OUTLINE BOUNDARIES OF THIS PLAT OF TORREY PINES...
DATE: 11th DAY OF October, 1922 A.D.

DEDICATION
I, THE SUBSCRIBER COMPANY, USA TRAMMER, PRESIDENT, AND ROBERT A. HERRMAN, DONNA M. HERRMAN, MARJORIE C. HERRMAN, GENE L. HERRMAN, AND LOUIE A. PETERSON...
IN WITNESS WHEREOF, WE DO HEREBY SET OUR HANDS THIS 11th DAY OF October, 1922 A.D.

ACKNOWLEDGEMENT
STATE OF NEBRASKA: I, [Signature], COUNTY ENGINEER OF DOUGLAS COUNTY, NEBRASKA, DO HEREBY CERTIFY THAT THIS PLAT OF TORREY PINES...
COUNTY ENGINEER OF DOUGLAS COUNTY

COUNTY ENGINEER'S CERTIFICATE
I HEREBY APPROVE THIS PLAT OF TORREY PINES LOTS 1 THRU 176, INCLUSIVE, AND OUTLOTS A, B, C, AND D AS TO THE DESIGN STANDARDS HEREIN...
COUNTY ENGINEER OF DOUGLAS COUNTY

APPROVAL OF CITY PLANNING BOARD
THIS PLAT OF TORREY PINES WAS APPROVED BY THE CITY PLANNING BOARD OF THE CITY OF OMAHA THIS 21st DAY OF November, 1922 A.D.
CITY PLANNING BOARD

CITY COUNCIL ACCEPTANCE
THE PLAT OF TORREY PINES IS HEREBY APPROVED AND ACCEPTED BY THE CITY COUNCIL OF OMAHA THIS 22nd DAY OF November, 1922 A.D.
CITY COUNCIL

OLD Part of Arbor Oaks