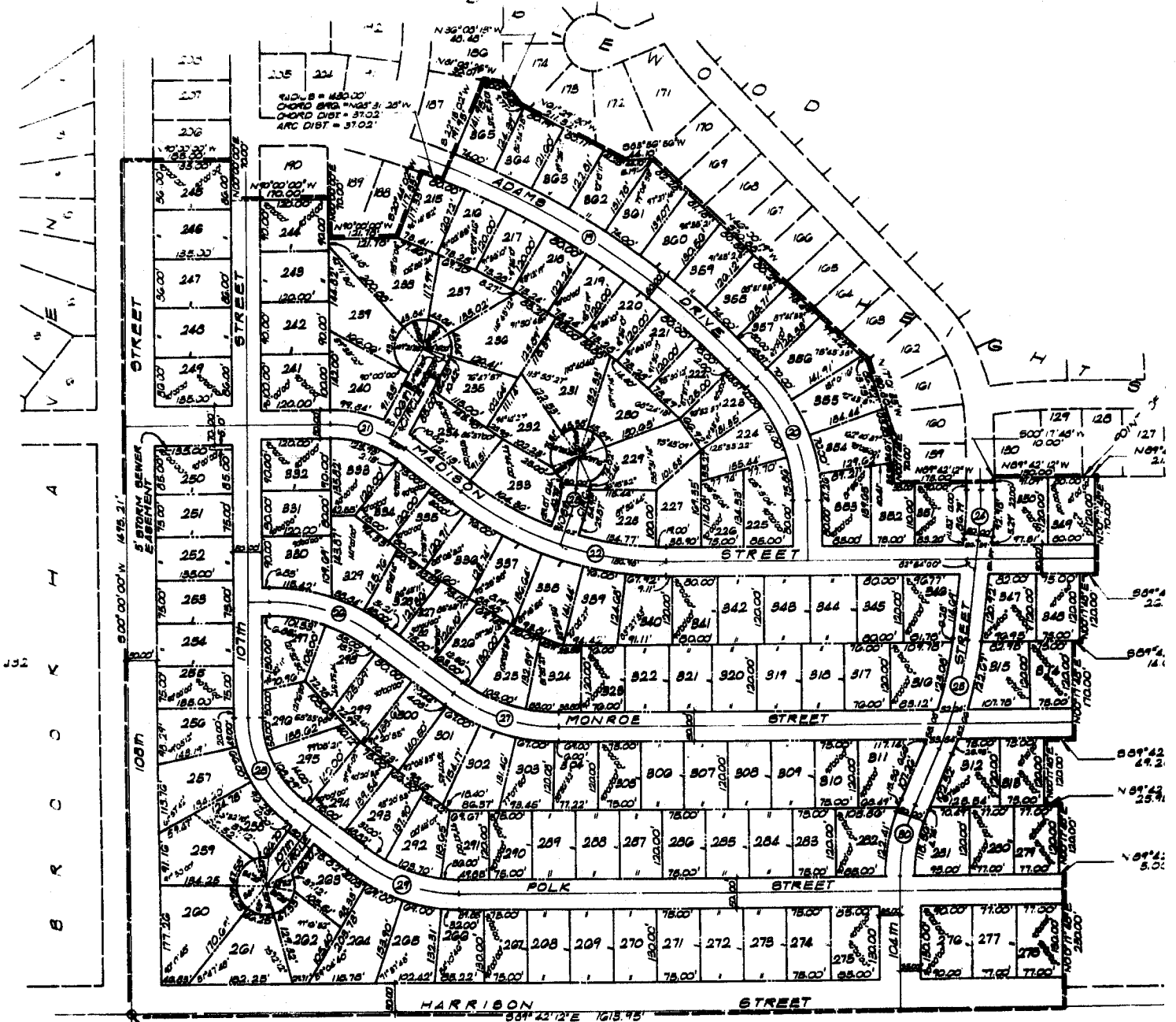


# APPLEWOOD HEIGHTS

LOTS 215 THRU 305, INCLUSIVE  
 BEING A PLATTING OF PART OF THE SW 1/4 OF SECTION 9,  
 T12N, R12E OF THE 37TH PM, DOUGLAS COUNTY, NEBRASKA.



SOUTHWEST CORNER OF THE SW 1/4  
 OF SECTION 9, T12N, R12E OF THE 37TH  
 PM, DOUGLAS COUNTY, NEBRASKA.

CENTERLINE CURVE DATA				
19 Δ = 24°04'46"	20 Δ = 44°00'00"	21 Δ = 39°00'00"	22 Δ = 33°42'12"	23 Δ = 14°00'00"
D = 3,957,655.7	D = 15,482,510	D = 27,288,714	D = 10,051,095	D = 25,047.9
T = 310.32'	T = 125.25'	T = 74.36'	T = 300.19'	T = 24.80'
L = 611.41'	L = 283.08'	L = 142.94'	L = 585.04'	L = 48.87'
R = 1455.00'	R = 310.00'	R = 210.00'	R = 570.00'	R = 200.00'
24 Δ = 7°08'00"	25 Δ = 15°02'00"	26 Δ = 37°30'00"	27 Δ = 37°12'12"	28 Δ = 51°30'00"
D = 1,879,278	D = 7,784,751	D = 15,482,510	D = 19,090	D = 27,288,714
T = 45.00'	T = 98.40'	T = 108.28'	T = 100.97'	T = 101.29'
L = 09.88'	L = 195.65'	L = 202.89'	L = 194.00'	L = 188.70'
R = 725.85'	R = 740.76'	R = 310.00'	R = 300.00'	R = 210.00'
29 Δ = 33°12'12"	30 Δ = 22°14'00"			
D = 14,757,172	D = 17,533,999			
T = 100.45'	T = 04.95'			
L = 198.86'	L = 128.27'			
R = 290.00'	R = 330.54'			

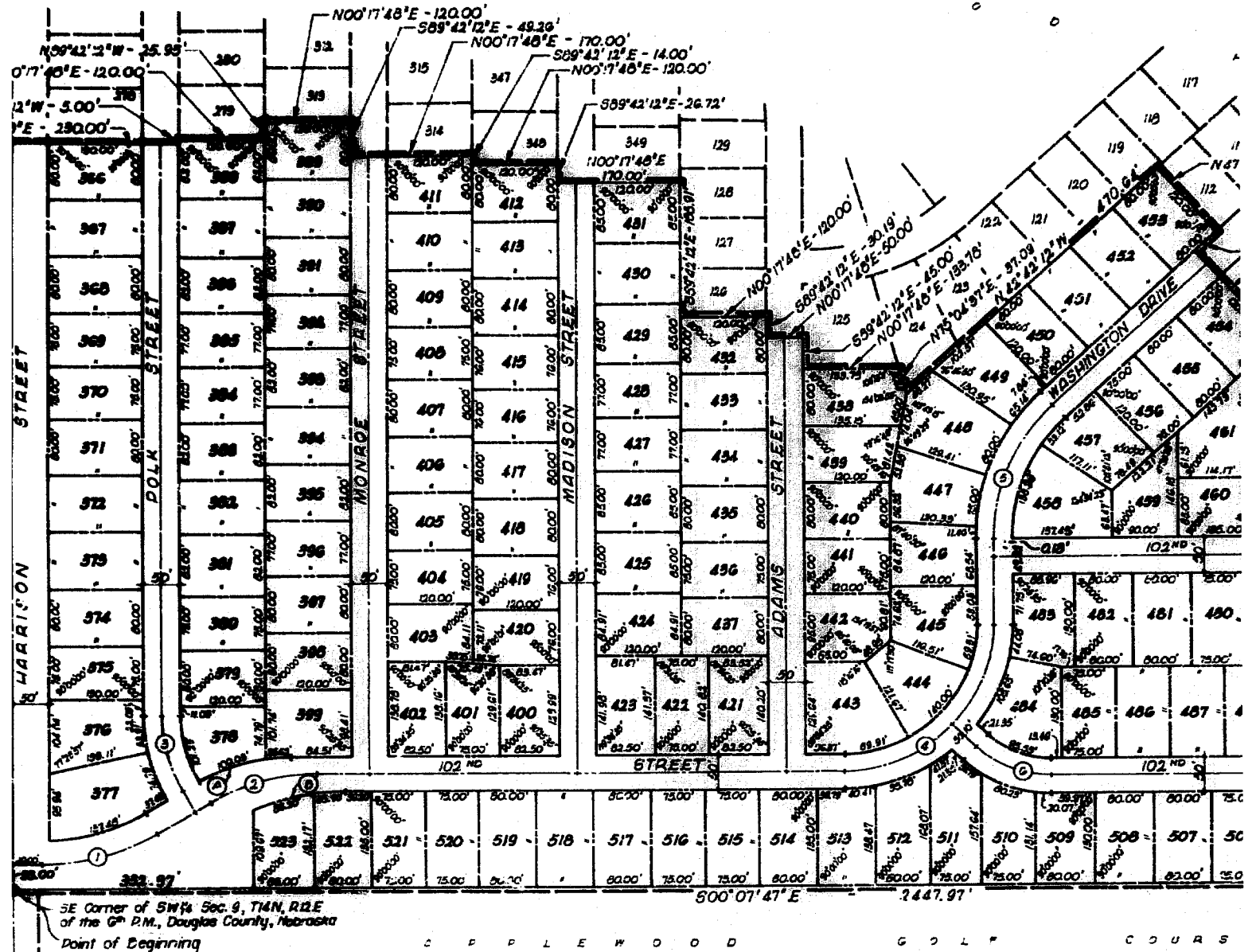


DATE OF RECORDING: 11/12/12



LOTS 366 THRU 523, INCLUSIVE

Being a Platting of Part of the SW 1/4 of Section 9, T14N, R1E of the 6th P.M., Douglas County, Nebraska.



SE Corner of SW 1/4 Sec. 9, T14N, R1E of the 6th P.M., Douglas County, Nebraska  
Point of Beginning

C P P L E W O O D G O L F C O U R S E

CENTERLINE CURVE DATA

1. Δ - 30°19'11"	2. Δ - 29°54'22"	3. Δ - 30°19'57"	4. Δ - 89°34'25"	5. Δ - 47°00'00"	6. Δ - 43°02'22"	7. Δ - 7°12'11"	8. Δ - 7°12'11"
D - 18.27121	D - 18.09924	D - 26.49884	D - 27.28371	D - 22.26330	D - 37.65249	D - 4.42435	D - 4.623
T - 83.00'	T - 80.12'	T - 58.61'	T - 208.14'	T - 111.89'	T - 60.00'	T - 81.51'	T - 78.00'
L - 166.01'	L - 156.59'	L - 114.47'	L - 328.30'	L - 211.09'	L - 114.90'	L - 162.81'	L - 153.79'
R - 313.58'	R - 293.99'	R - 216.22'	R - 210.00'	R - 257.33'	R - 152.17'	R - (293.01)'	R - (239.2)'

RIGHT-OF-WAY CURVE DATA

A. Δ - 29°54'22"	B. Δ - 22°15'10"
D - 22.04977	D - 18.04975
T - 68.41'	T - 66.89'
L - 133.65'	L - 102.10'
R - 259.88'	R - 300.10'

10772 Red M

RECEIVED  
1987 SEP 10 PM 4:09  
GEORGE J. KEMICZ  
REGISTERED DEEDS  
DOUGLAS COUNTY, NEBR.

BK 18  
PG 5E  
Dee

